

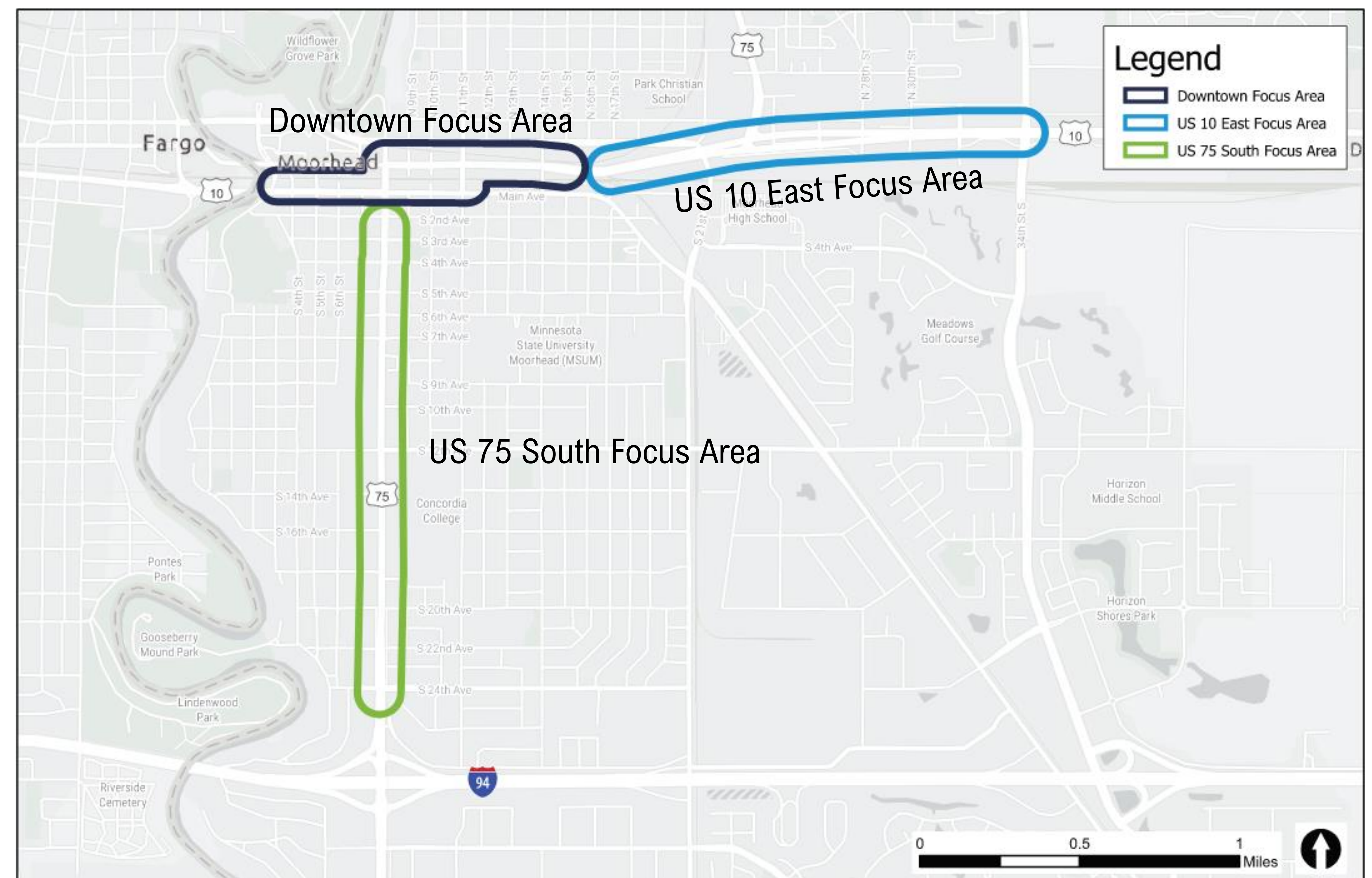
Presentation to the Metro COG Transportation Technical Committee (TTC)

May 14, 2020

Project Overview

About the study:

- Builds on work completed as part of the 2013 study
- Incorporates recommendations from the 12th Avenue corridor study
- Incorporates recommendations from the 11th Street underpass study
- Develops a vision and recommendations for three focus areas:
 1. Downtown Moorhead
 2. US 75 South
 3. US 10 East
- Recommendations will set framework for the Minnesota Department of Transportation (MnDOT) District 4 reconstruction projects in 2025 and 2026



Study partners:

- MnDOT District 4
- City of Moorhead
- Fargo-Moorhead Metro COG
- Downtown Moorhead, Inc.
- MATBUS
- Minnesota State University Moorhead








Study Vision & Goals

Vision:

This study looked at balancing the needs of motorized and non-motorized traffic with business access, while considering the effects of changes on Main Avenue in downtown Fargo and what it means for traffic traveling across the Red River through downtown Moorhead. Community and stakeholder input were key in informing the future visions for the corridors.

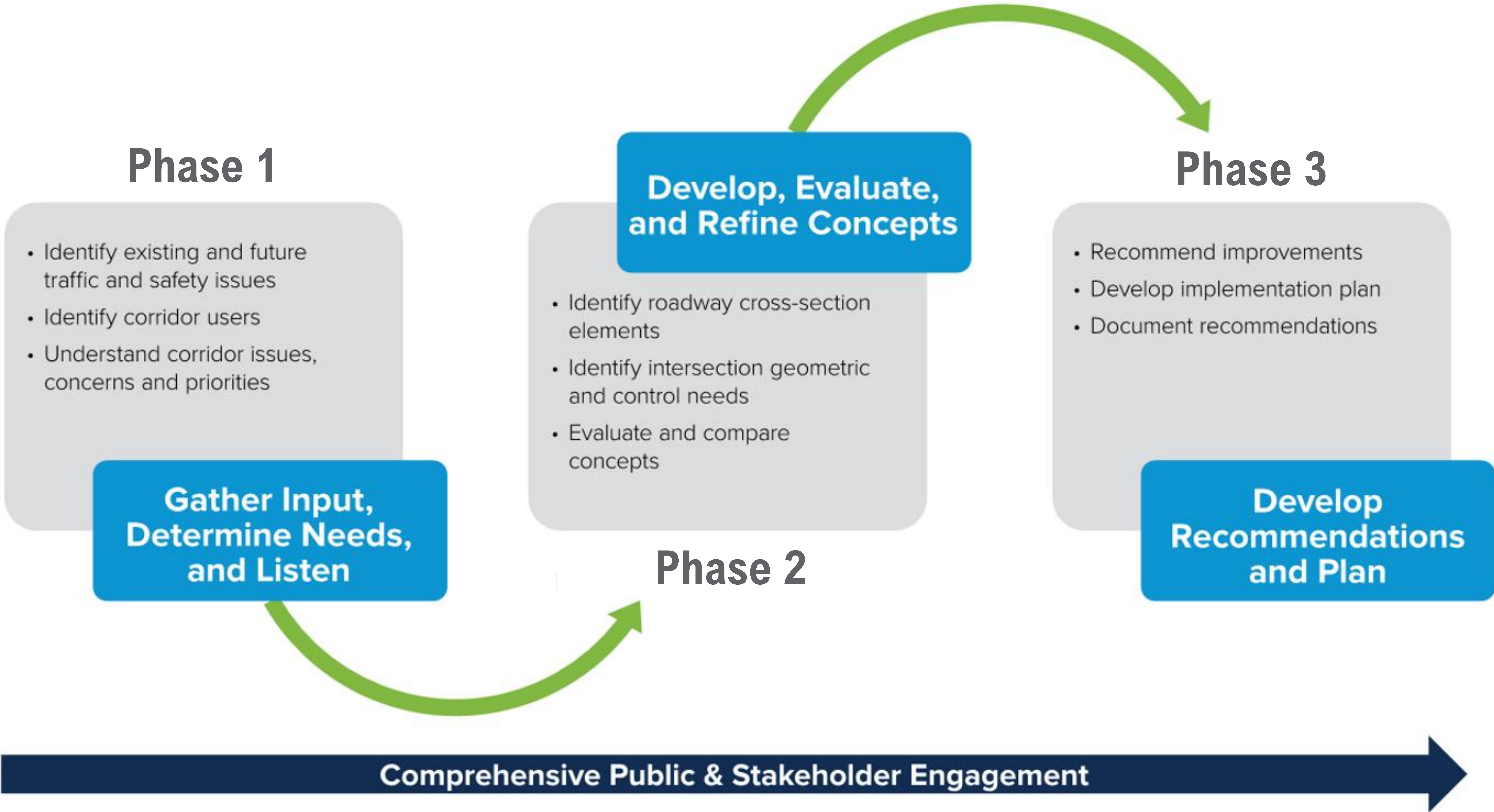
Goals:

The study was guided by the following overarching goals in which the recommended visions need to:

-  Provide roadways that to fit land use (i.e., appropriate access and design).
-  Accommodate appropriate users (i.e., complete streets) .
-  Create an environment to stimulate growth.
-  Provide flexibility for near and long-term transportation needs .
-  Improve “Gateway” feel for US 10 and US 75 corridors.

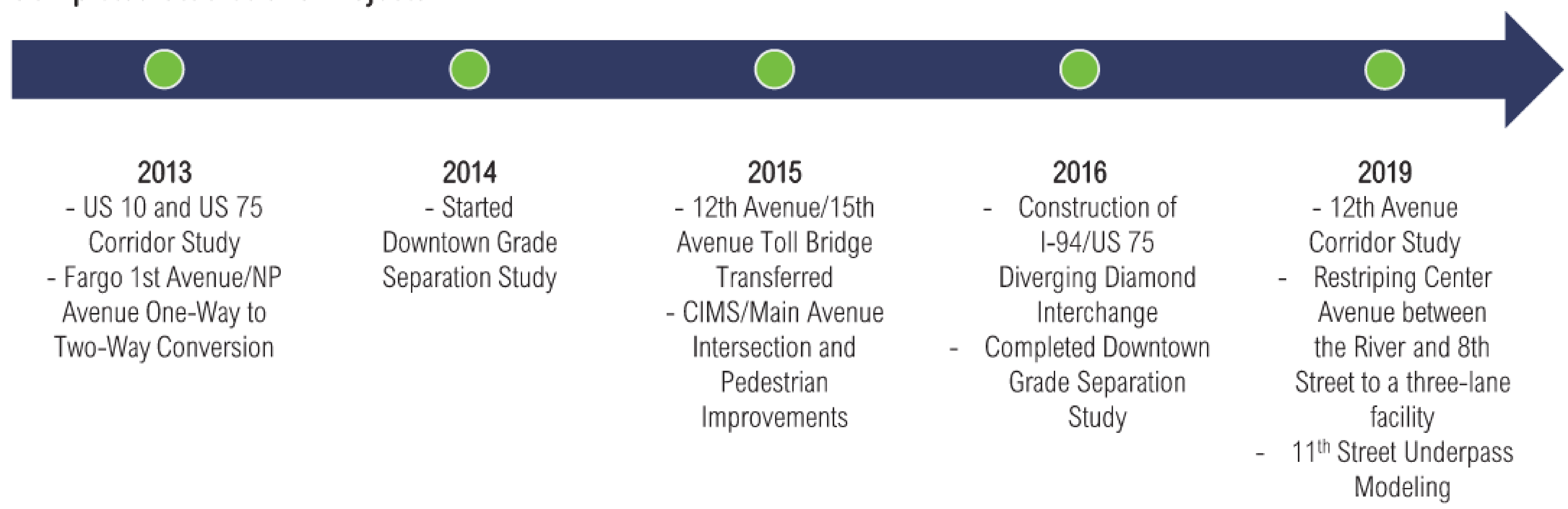
Ultimately, the study will develop and execute a project that meets the needs for 30+ years.

Study Process

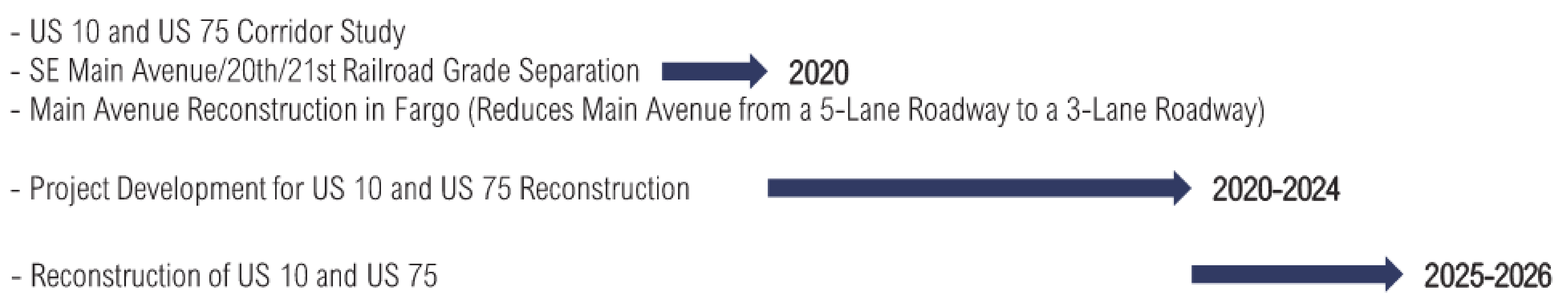


Timeline for Projects Impacting Downtown Moorhead

Completed Studies and Projects:



Ongoing and Future Work:



Public & Stakeholder Engagement Summary

Broad public engagement and specific outreach for each Focus Area

1250+

people engaged

10+ ENGAGEMENT STRATEGIES



pop-up meeting



public meeting



focus groups



web survey



paper survey



email



social media



newsletter



story map

WHAT WE HEARD



The corridors should be planned to accommodate all users.



Streetscape improvements, including wider sidewalks, artistic elements, and designs for safer crossings, should be considered.



Bicycle and pedestrian infrastructure improvements are needed.



The US 10 corridor could be improved by making design changes to reduce vehicular speeds.

ROUND 1

126

surveys completed

43

people attended in-person engagement events

ROUND 2

261

surveys completed

100

people attended in-person engagement events

730

written comments received



Downtown Focus Area

Overview:

- The Downtown focus area serves many differing land uses including a combination of low-density office, service, commercial and residential land uses.
- Additional high-density residential developments are currently under construction.
- The City of Moorhead's goal is to make downtown a better place to socialize, work, shop and live.



Downtown Focus Area

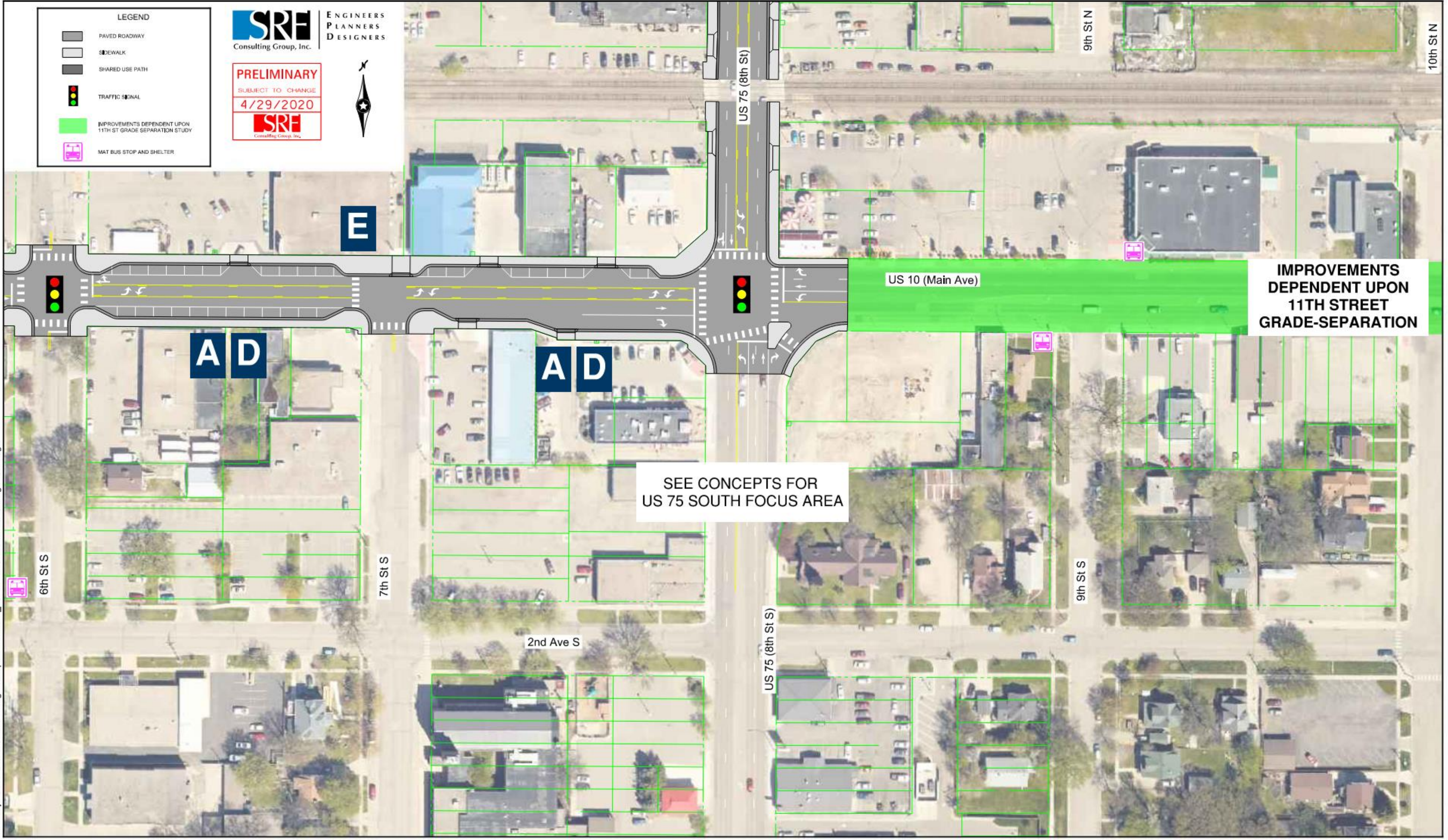
Vision for Focus Area:

The vision largely prioritizes roadway design elements that focus on improving the environment for pedestrians and bicyclists by taking advantage of opportunities presented by reductions in vehicular traffic volumes along key downtown roadways.

Overarching Goals	Elements of Vision for Focus Area
Provide roadways that fit land use (i.e., appropriate access and design)	<ul style="list-style-type: none"> ▪ Downtown is a dense commercial area with many business accesses ▪ Future redevelopment will increase residential living opportunities
Accommodate appropriate users (i.e., complete streets)	<ul style="list-style-type: none"> ▪ Downtown has high pedestrian activity ▪ With future redevelopment opportunities, pedestrian activity will increase ▪ Numerous transit routes serve the corridors ▪ Need to prioritize walking and biking
Create an environment to stimulate growth	<ul style="list-style-type: none"> ▪ Prioritizing a pedestrian friendly environment stimulates growth ▪ Roadway design needs to consider changing environment in downtown
Provide flexibility for near and long-term transportation needs	<ul style="list-style-type: none"> ▪ Red River crossing at Main Avenue is important as a mobility corridor but also needs to balance the needs of a downtown that desires to become a more pedestrian friendly environment ▪ Future route jurisdiction change of US 10 /75 and railroad grade-separation will alter traffic patterns providing opportunities to “right-size” roadways ▪ Reconstruction of Main Avenue in Fargo will also alter traffic patterns proving opportunities to “right-size” roadways
Improve “Gateway” feel for US 10 and US 75 corridors	<ul style="list-style-type: none"> ▪ “Right-size” roadways to provide more space for streetscaping aesthetics



H:\Projects\11000\11648\Design\Graphics\11648_Downtown Focus Area Fig. 10.1.dgn



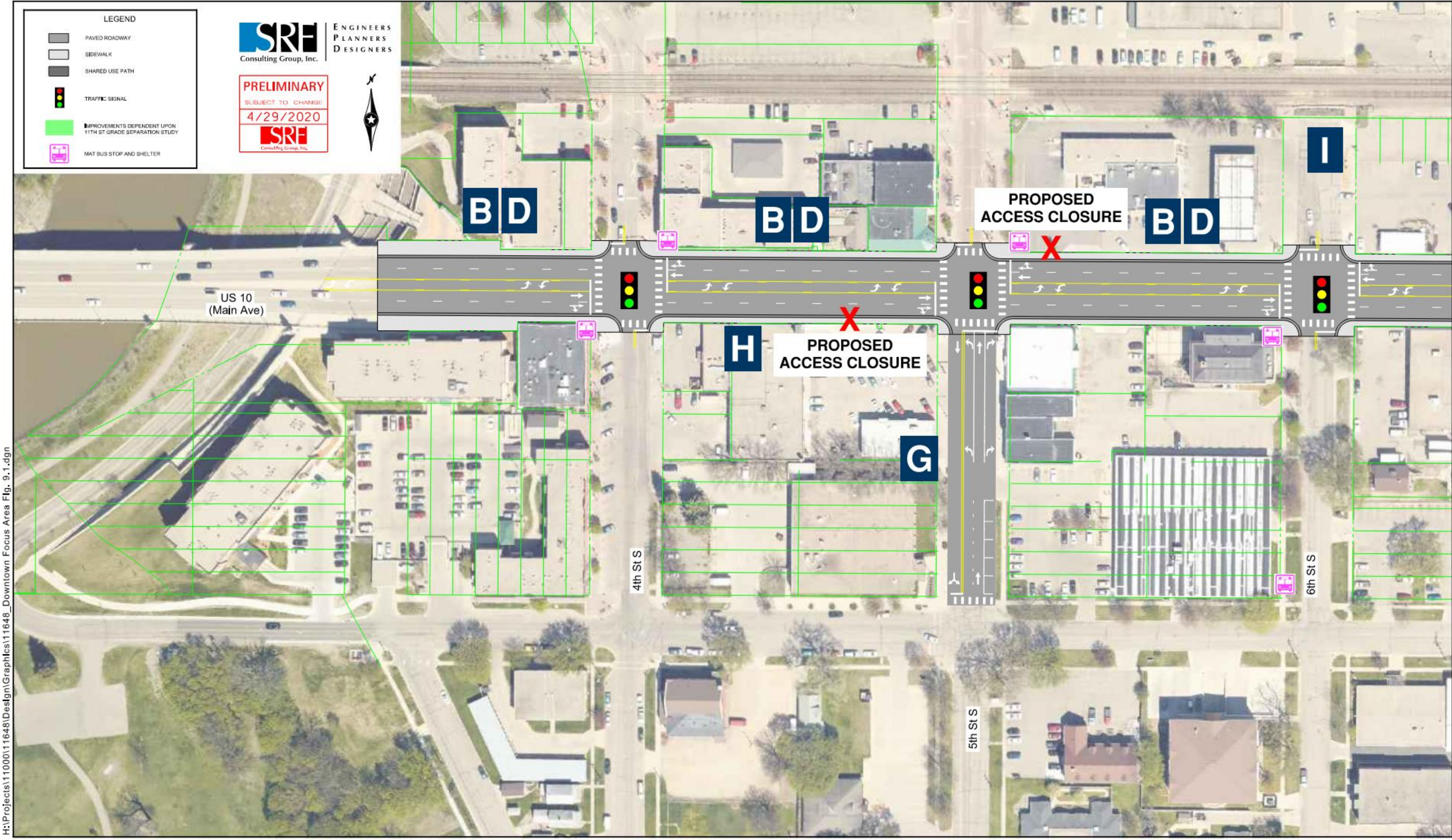
H:\Projects\11000\11648\Design\Graphics\11648_Downtown Focus Area Fig. 10.2.dgn

SRE Locally Preferred Concepts for Downtown Focus Area

US 10 / US 75 Corridor Study
Moorhead, Minnesota

Job # 11648
4/29/2020

Figure 27



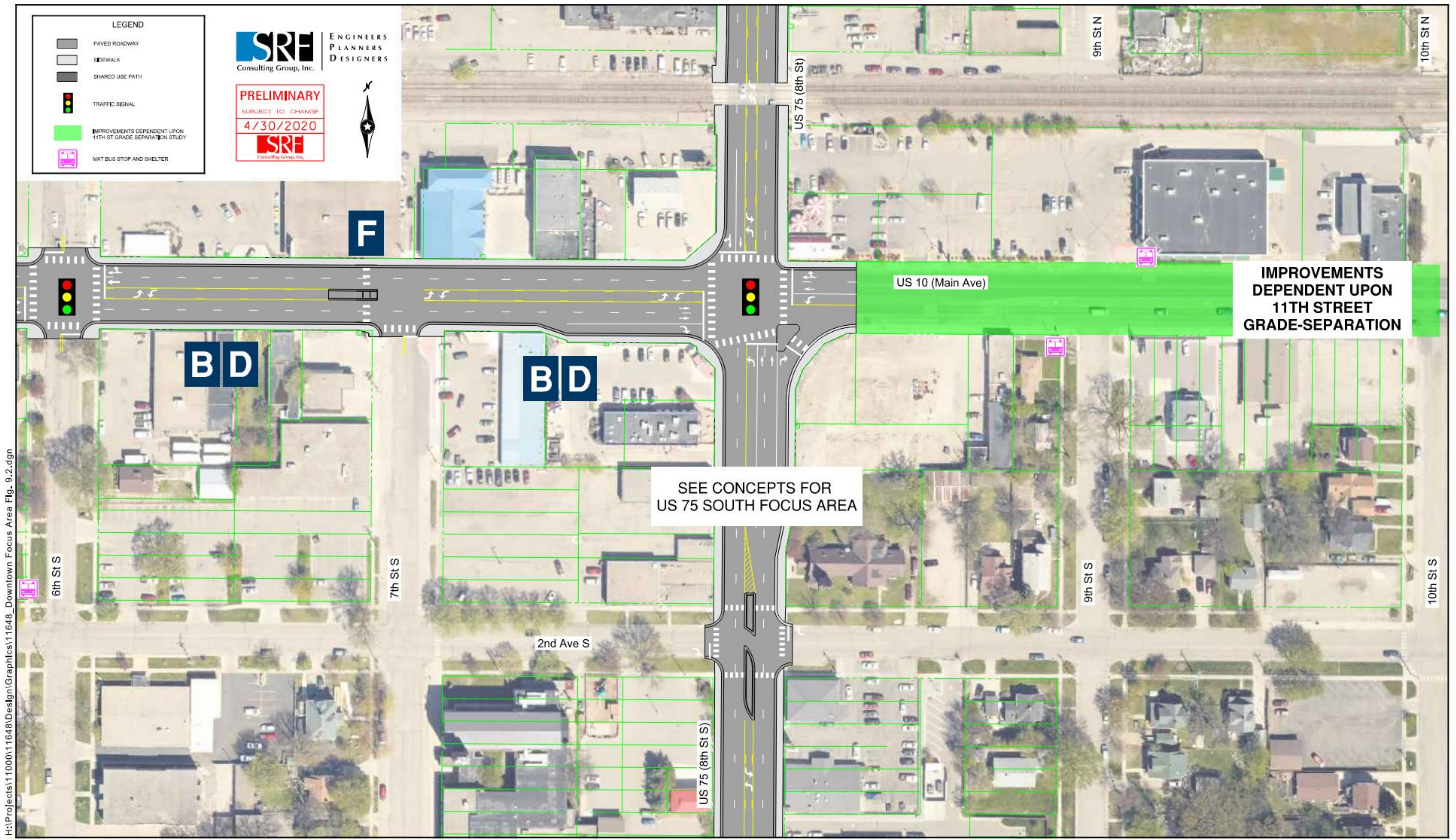
H:\Projects\11000\11648\Design\Graphics\11648_Downtown Focus Area Fig. 9.1.dgn

SRE Alternate Concepts for Downtown Focus Area

US 10 / US 75 Corridor Study
Moorhead, Minnesota

Job # 11648
4/29/2020

Figure 28

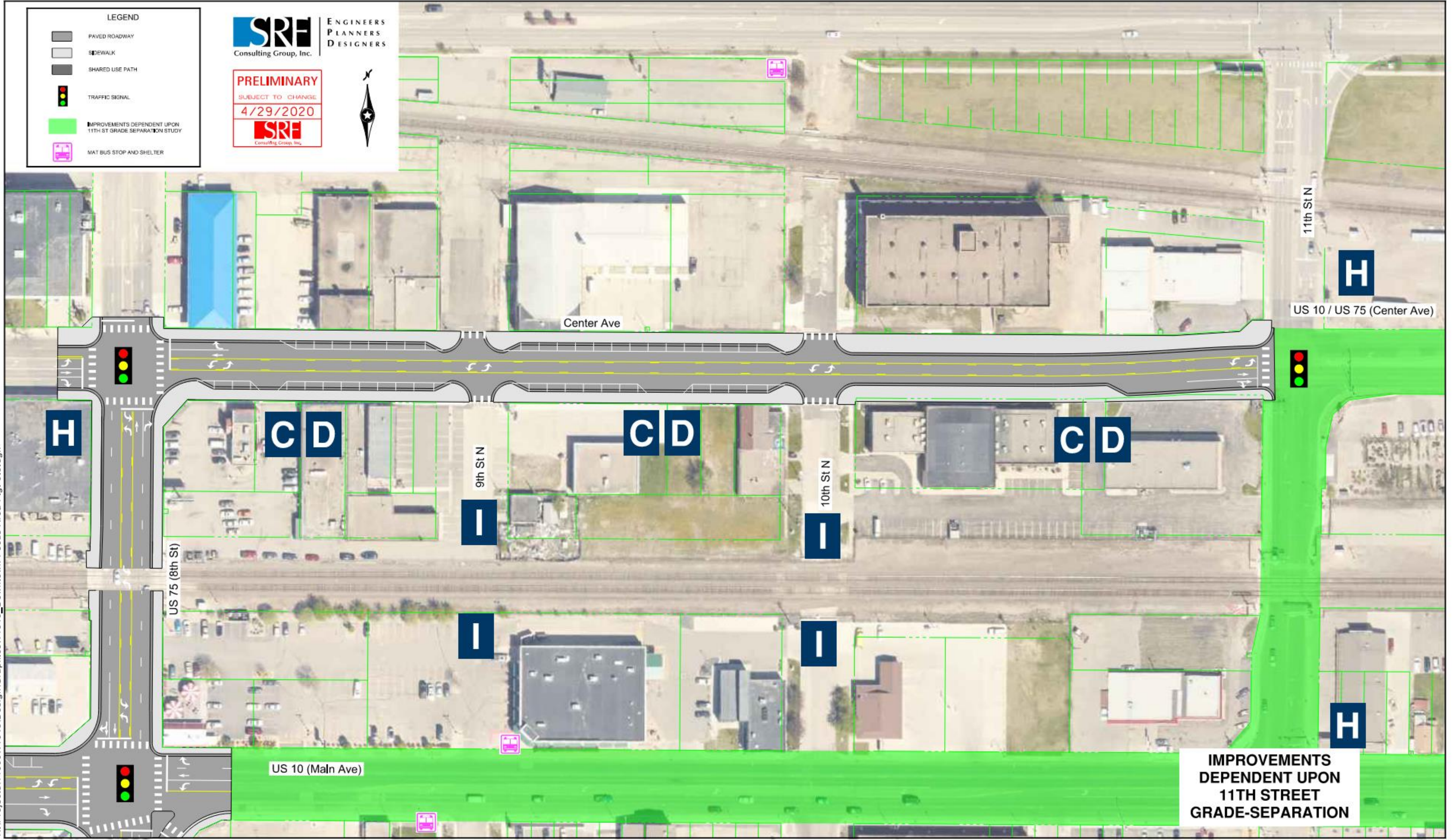


H:\Projects\11000\11648\Design\Graphics\11648_Downtown Focus Area Fig. 9.2.dgn

SRE **Alternate Concepts for Downtown Focus Area**
US 10 / US 75 Corridor Study
Moorhead, Minnesota

Figure 29

Job # 11648
4/30/2020



H:\Projects\11000\11648\Design\Graphics\11648_Downtown Focus Area Fig. 9.3.dgn

US 75 South Focus Area

Overview:

- Area roughly encompasses the neighborhoods surrounding the three main higher education institutions in the City (Concordia College, Minnesota State University Moorhead, and Minnesota State Community and Technical College).
- Commercial uses on the northern end transition to low/medium density housing to institutional use (Concordia College) as you head south.

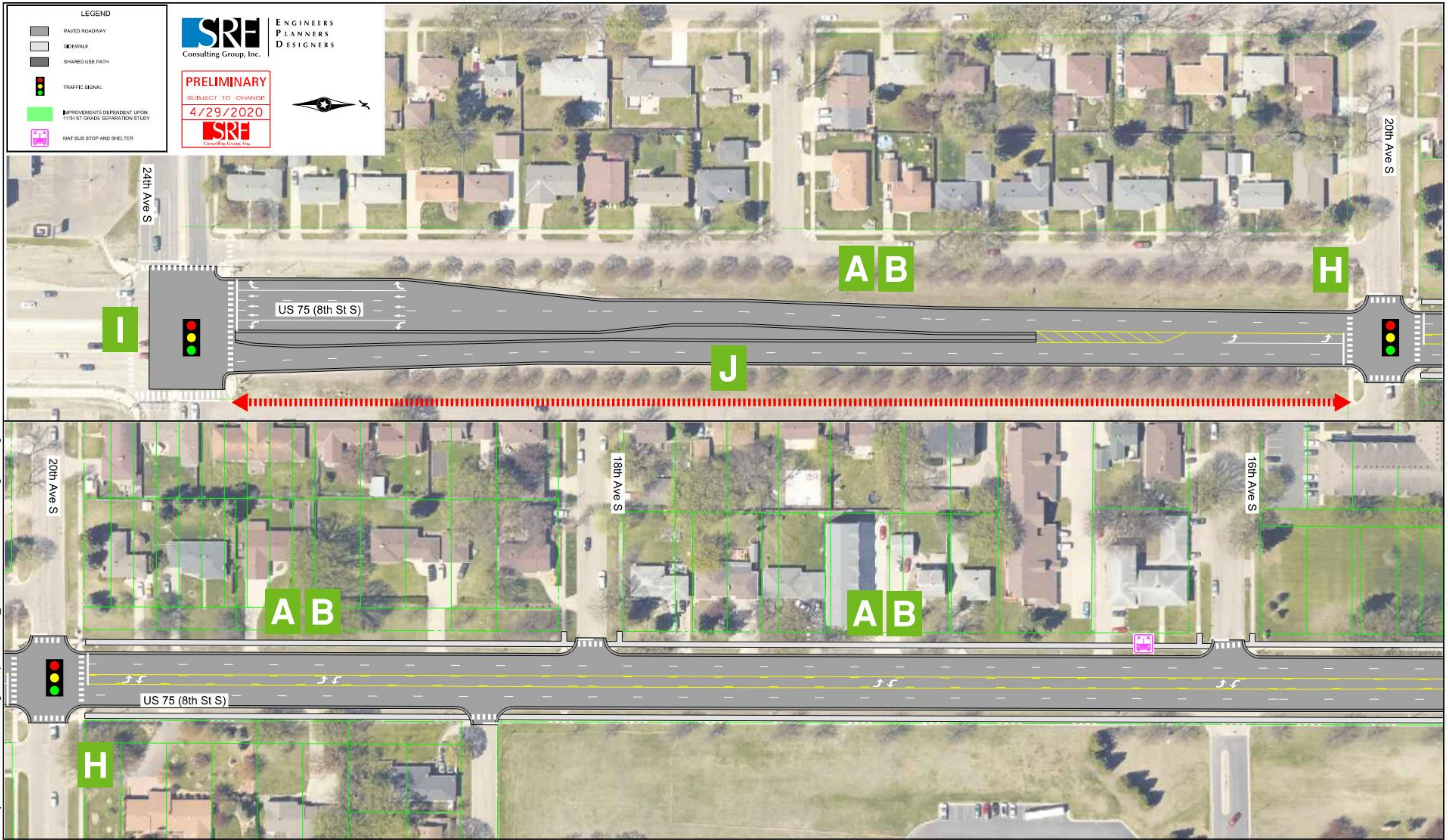


US 75 South Focus Area

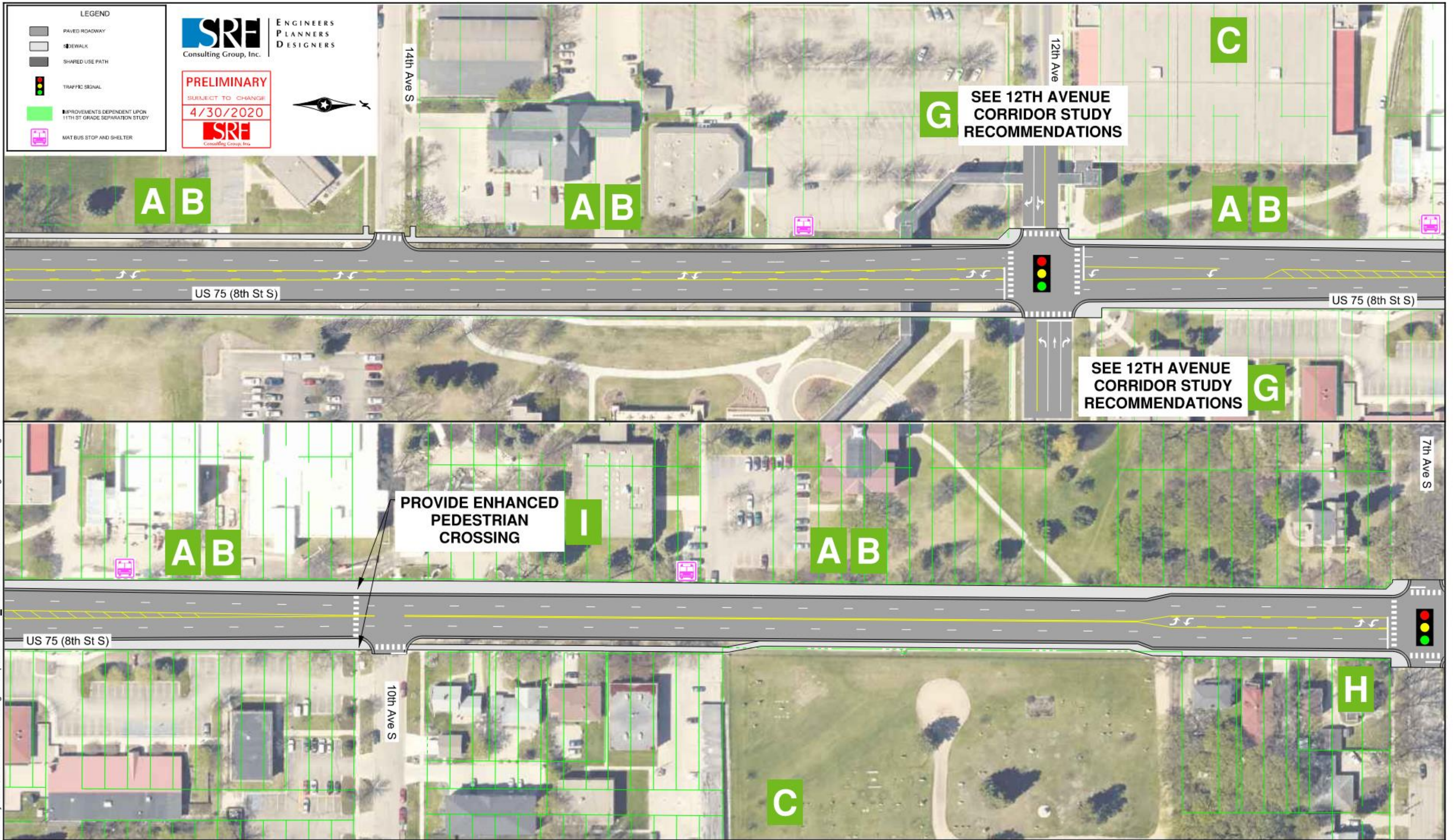
Vision for Focus Area:

The vision largely prioritizes maintaining the existing historical character with the large street trees having more of a neighborhood feel mixed with a collegiate environment with many pedestrians. Many of the homes in this area derive access directly from 8th Street (US 75). Roadway design elements focus on improving the environment for pedestrians and bicyclists while maintaining the historic feel of the corridor.

Overarching Goals	Elements of Vision for Focus Area
Provide roadways that fit land use (i.e., appropriate access and design)	<ul style="list-style-type: none"> ▪ Maintain access to residential land uses that still require direct access to 8th Street (US 75) ▪ Minimize impacts to business accesses between 5th and Main Avenues ▪ Maintain mobility for commuter users as 8th Street (US 75) is the main connection between I-94 and downtown Moorhead
Accommodate appropriate users (i.e., complete streets)	<ul style="list-style-type: none"> ▪ Improve crossings for the high pedestrian activity that cross 8th Street (US 75) ▪ Improve north-south trail connections
Create an environment to stimulate growth	<ul style="list-style-type: none"> ▪ Focus area is well developed so this is a low priority goal for US 75 South
Provide flexibility for near and long-term transportation needs	<ul style="list-style-type: none"> ▪ Address traffic safety and operational deficiencies at key intersections ▪ Address “jog” in corridor alignment
Improve “Gateway” feel for US 10 and US 75 corridors	<ul style="list-style-type: none"> ▪ Maintain historic feel of corridor by limiting impacts to existing street trees



H:\Projects\11000\11648\Design\Graphics\11648_US 75 South Focus Area Fig. 14.1.dgn



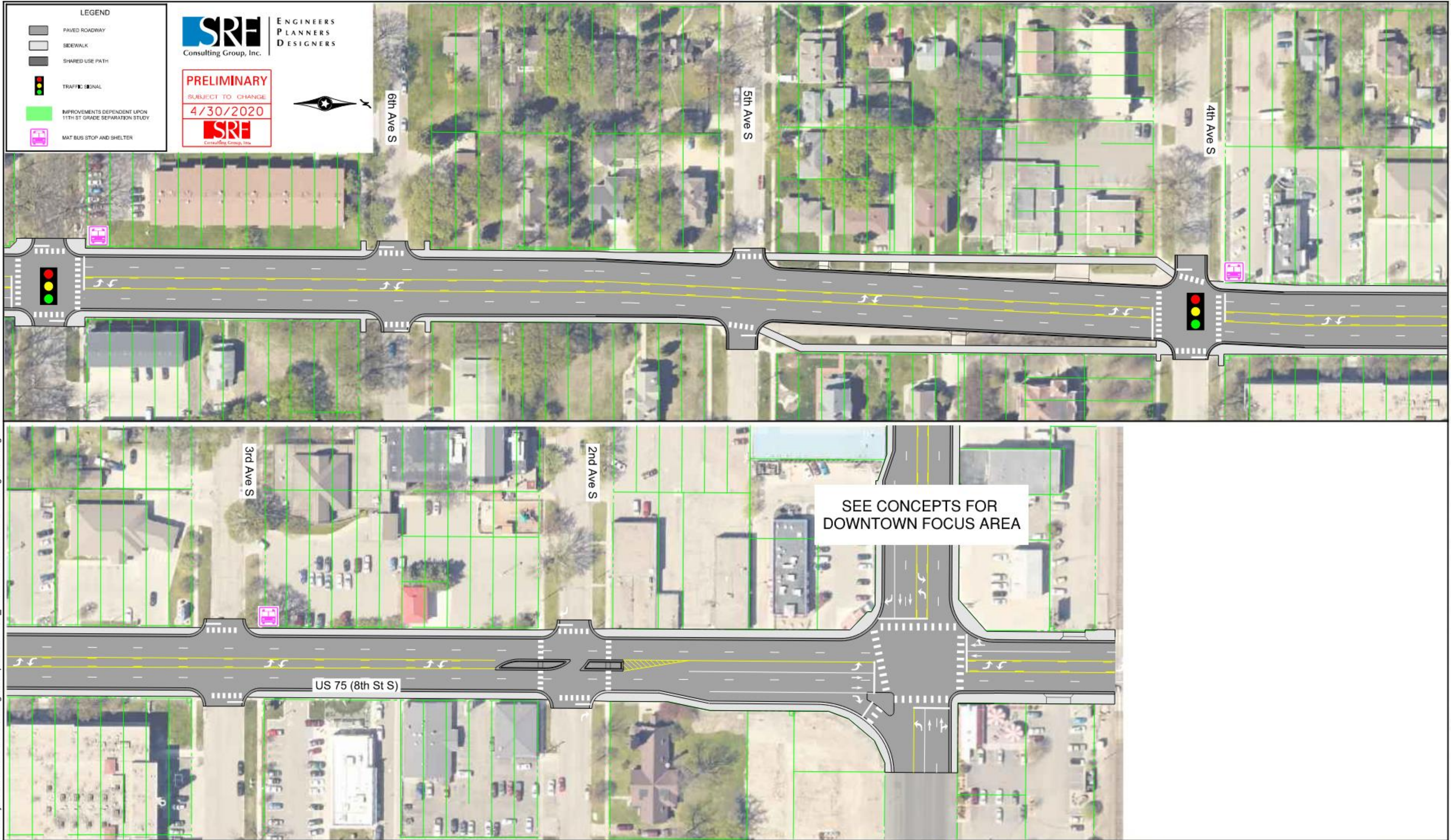
H:\Projects\11000\11648\Design\Graphics\11648_US 75 South Focus Area Fig. 14.2.dgn

SRE Locally Preferred Concepts for US 75 South Focus Area

US 10 / US 75 Corridor Study
Moorhead, Minnesota

Job # 11648
4/30/2020

Figure 32



H:\Projects\11000\11648\Design\Graphics\11648_US 75 South Focus Area Fig. 14.3.dgn

SRE Locally Preferred Concepts for US 75 South Focus Area

US 10 / US 75 Corridor Study
Moorhead, Minnesota

Job # 11648
4/30/2020

Figure 33

US 10 East Focus Area

Overview:

- Area primarily consists of land uses that are industrial and commercial type uses but the focus area has been identified as an area with opportunities for redevelopment. Further, in this focus area US 10 transitions from urban to rural with limited access except at key intersections.
- Trails are not provided on both sides of US 10 nor are there any pedestrian or bicycle connections to downtown.
- There is a need to address intersection and corridor safety issues identified along with a few traffic operations issues.

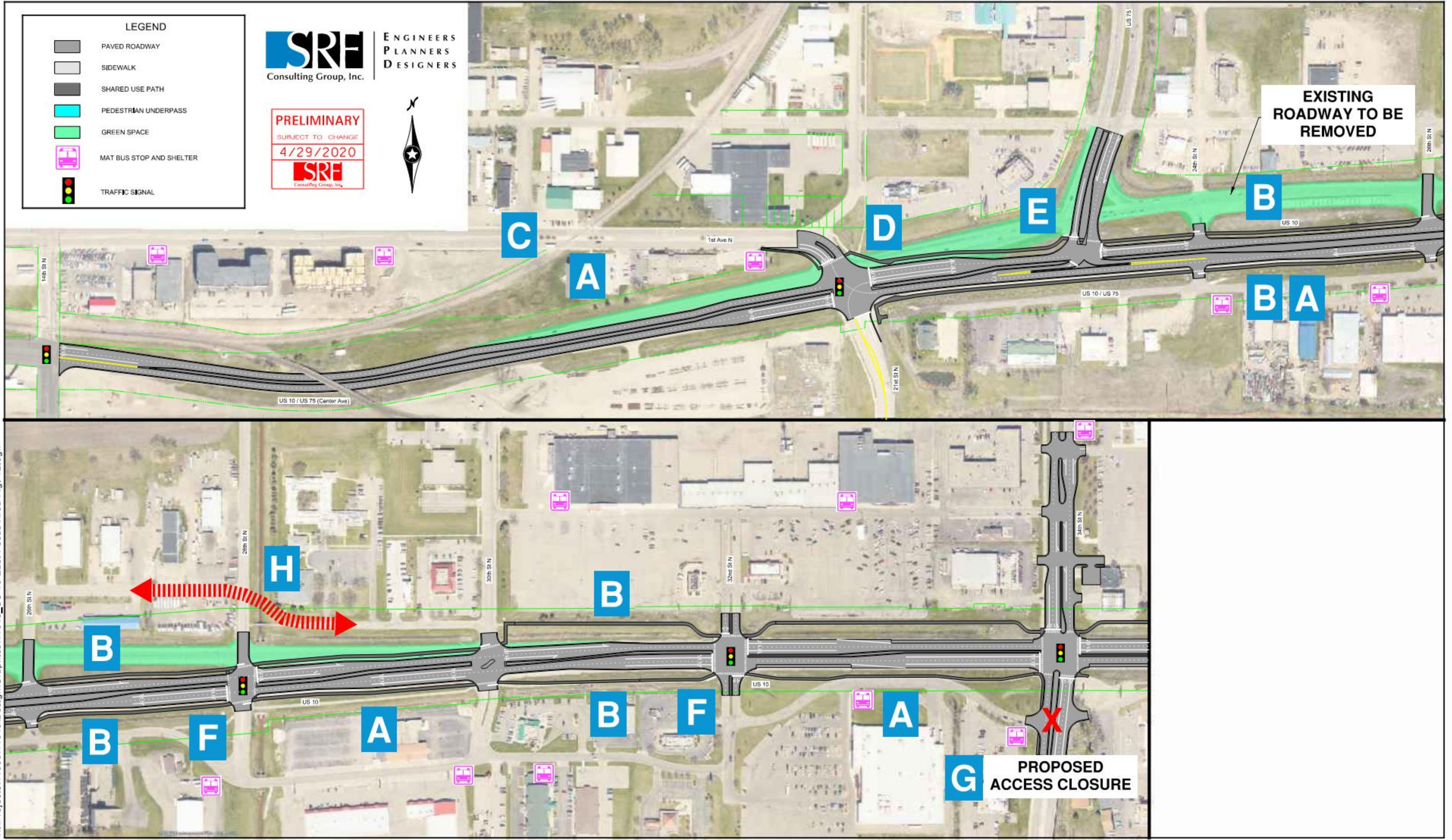


US 10 East Focus Area

Vision for Focus Area:

The vision largely prioritizes connecting the urban character of downtown with US 10 east of the focus area in Dilworth while addressing safety and mobility issues and improving connections for pedestrians and bicycles. Roadway design elements focus on improving the character of the corridor.

Overarching Goals	Elements of Vision for Focus Area
Provide roadways that fit land use (i.e., appropriate access and design)	<ul style="list-style-type: none"> Connect urban character between downtown Moorhead and Dilworth
Accommodate appropriate users (i.e., complete streets)	<ul style="list-style-type: none"> Maintain mobility for commuters Improve US 10 crossings for pedestrians and bicycles Improve east-west trail connections and provide connection to downtown Moorhead
Create an environment to stimulate growth	<ul style="list-style-type: none"> Redevelopment opportunities exist so access needs to be safety managed and planned
Provide flexibility for near and long-term transportation needs	<ul style="list-style-type: none"> Address traffic safety and operational deficiencies at key intersections
Improve “Gateway” feel for US 10 and US 75 corridors	<ul style="list-style-type: none"> Connect urban character between downtown Moorhead and Dilworth

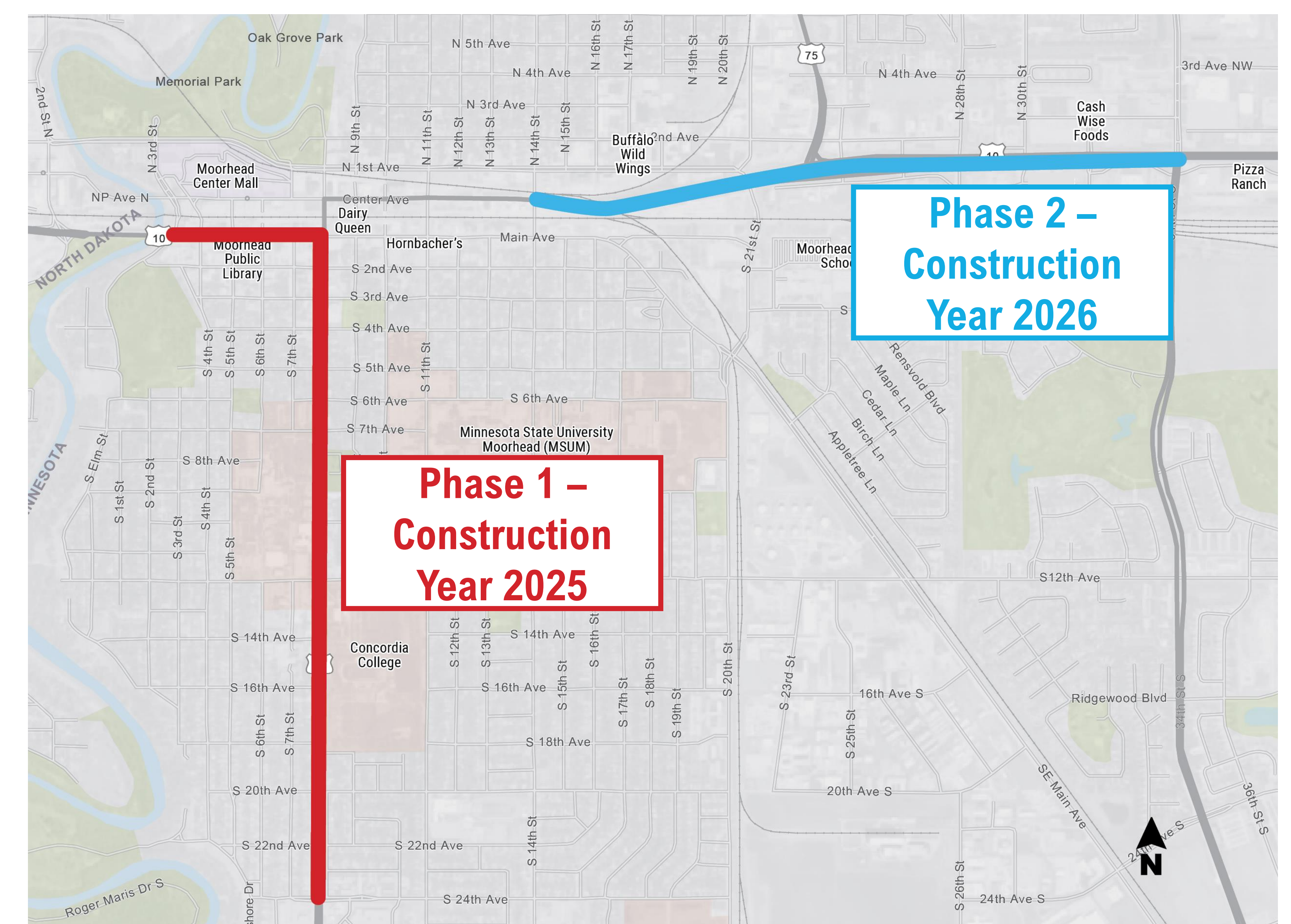


H:\Projects\11000\11648\Design\Graphics\11648_US 10 East Focus Area Fig. 12.dgn

Implementation

Phase 1 (Construction Year 2025)

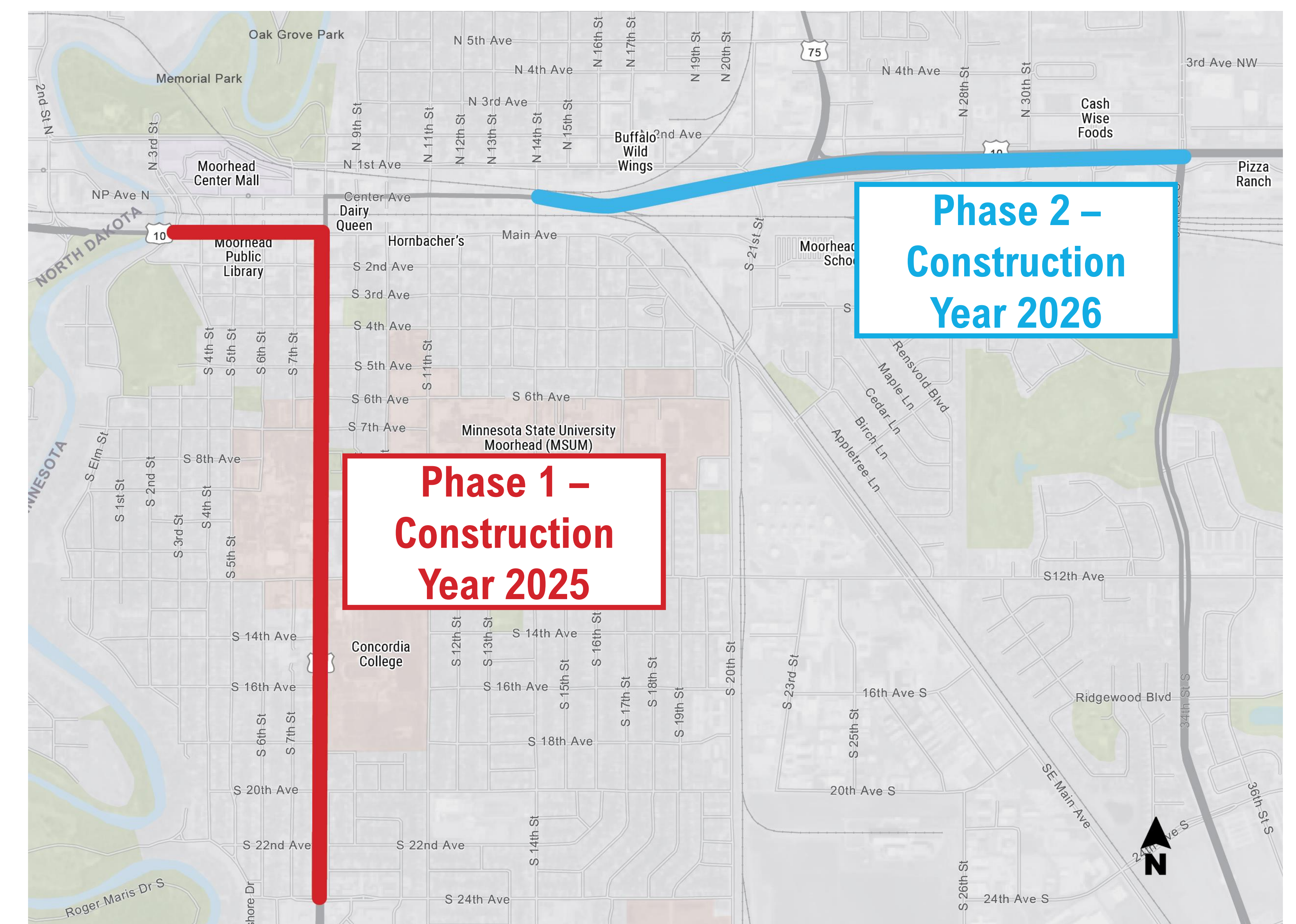
- Prioritizes the need to address deteriorating pavement conditions while minimizing potential construction staging and coordination issues with a future grade-separation project in downtown.
- The proposed location of grade-separation is anticipated to be at 11th Street. MnDOT and the City of Moorhead are currently working through the environmental documentation process and developing preliminary design plans; however, funding is not currently identified for any changes.



Implementation

Phase 2 (Construction Year 2026)

- Reconstructs the US 10 East focus area. Lower priority for pavement rehabilitation needs compared to Phase 1 project corridors.
- Construction staging and coordination is not expected to be an issue in the area because of the amount of existing right of way.
- Reconstruction of (Main Avenue east of 8th Street) will be planned and coordinated with any future downtown grade-separation project.



Community and stakeholder engagement will be ongoing through the next steps of the project!

Thank You!

For more information contact:

Michael Maddox
Fargo-Moorhead Metropolitan Council of Governments
701-532-5104 | maddox@fmmetrocog.org

Leif Garnass
SRF Consulting Group
763-452-4725 | lgarnass@srfconsulting.com

Visit the study website to view a copy of the report:

<http://www.fmmetrocog.org/projects-rfps/us-1075-corridor-study>



February 2019 Public Meeting at Moorhead High School