

Highway 10 Corridor Study

Dilworth, Minnesota



Study Partners

Consultants



Today's Agenda

- Inform
 - Study Overview
 - Key Issues
 - Existing Traffic Conditions
 - Next Steps
- Listen
 - Gather Public Input
 - Understand the Issues and Opportunities
 - Reaffirm the Vision and Establish Study Goals



Why is the Study Needed?

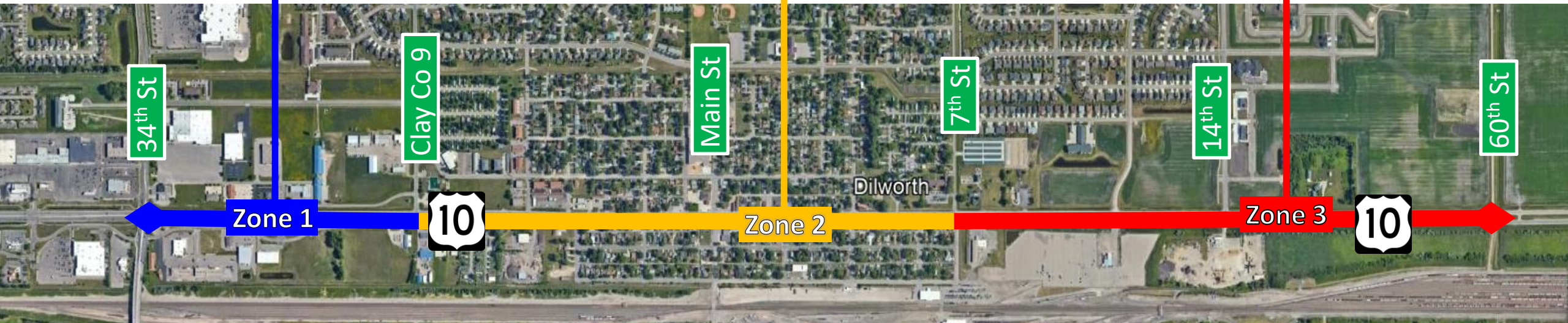
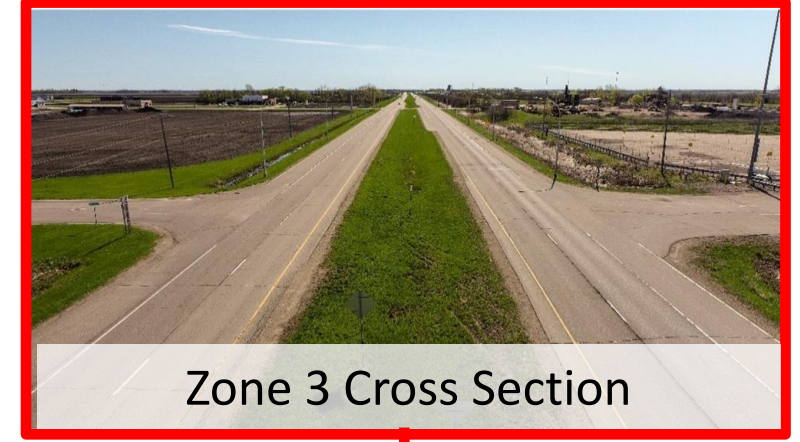
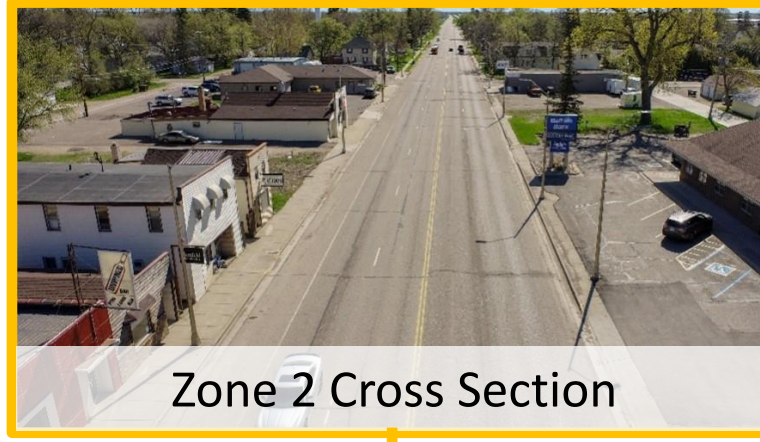
- Hwy 10 is a Vital East-West Corridor
- Evaluate Current and Future Needs
- Future Construction Projects
- New Development and Land Use
- Gather Public Input
- Develop Alternatives
 - Meet the Needs of All Users
 - Align with Community's Vision



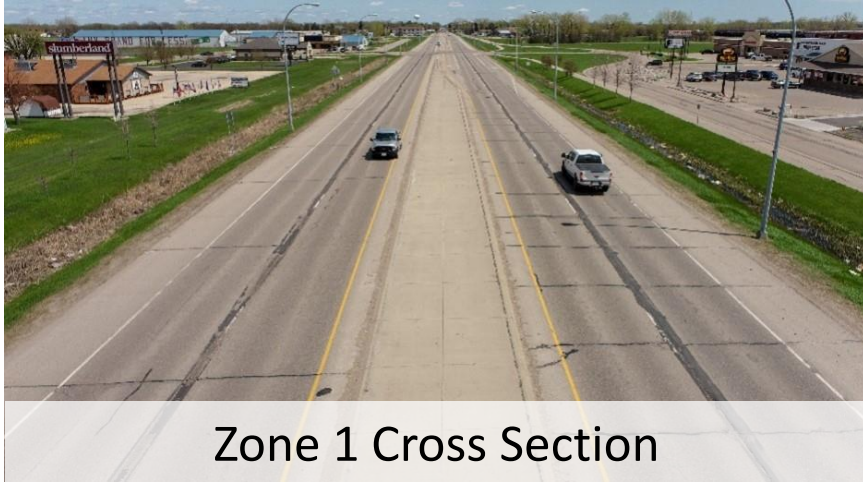
Project Location



Understanding the Corridor



Zone 1 – 34th Street to Co Rd 9



- 4-Lanes with Turn Lanes
- Raised Median
- Frontage Roads
- Shared-Use Path
- Commercial Development
- Undeveloped Land



Zone 2 – Co Rd 9 to 7th St E



Zone 2 Cross Section

- 4-Lanes No Turn Lanes
- No Median
- Sidewalks
- On-Street Parking
- Established Homes and Businesses



Zone 3 – 7th St E to 60th St

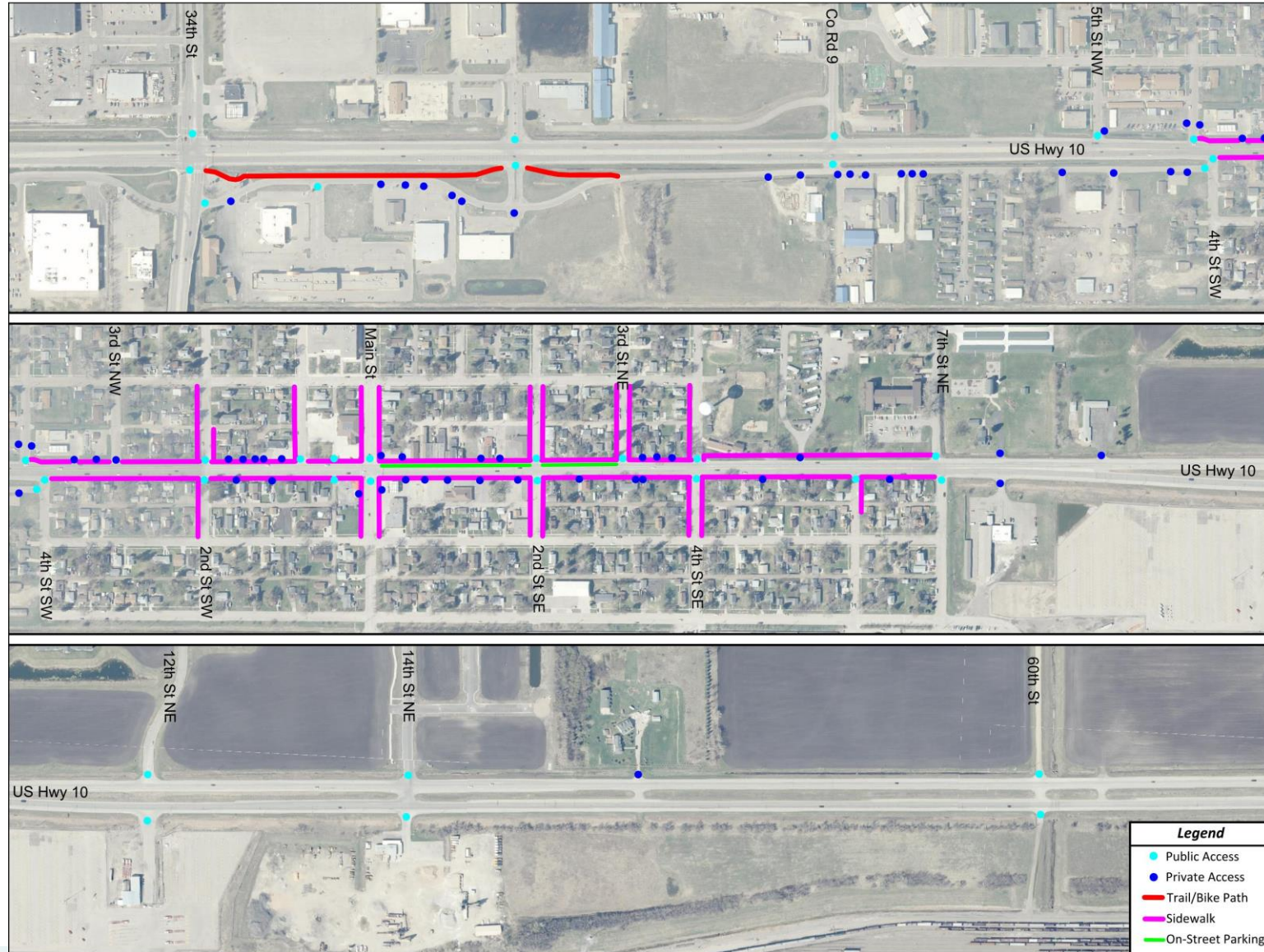


- 4-Lanes with Turn Lanes
- Wide Grass Median
- No Sidewalks or Trails
- New Residential & Commercial Developments
- Undeveloped Land

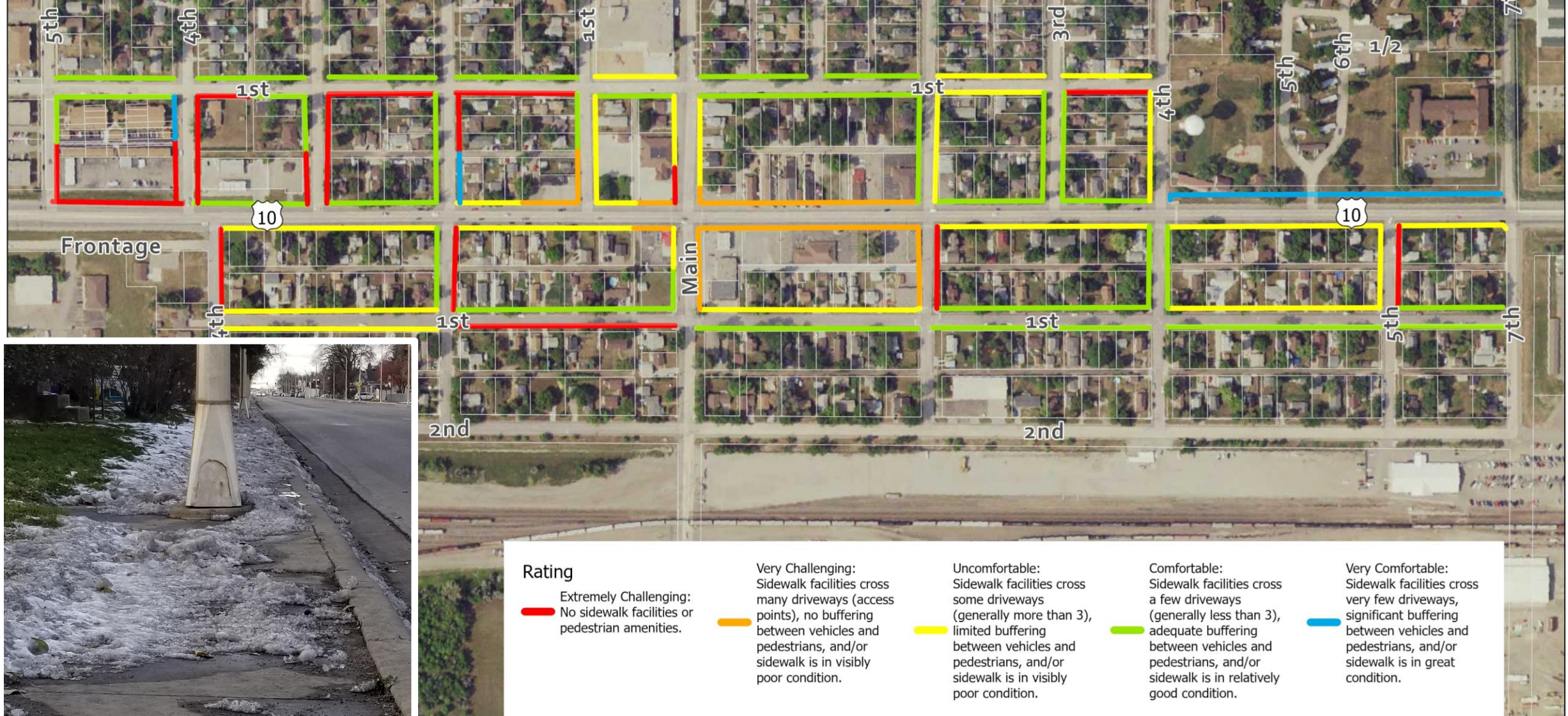


Sidewalks, Parking, & Access

- No Bike/Pedestrian Connectivity Between Zones
- Limited Parking
- Dense Access Points in Zone 2



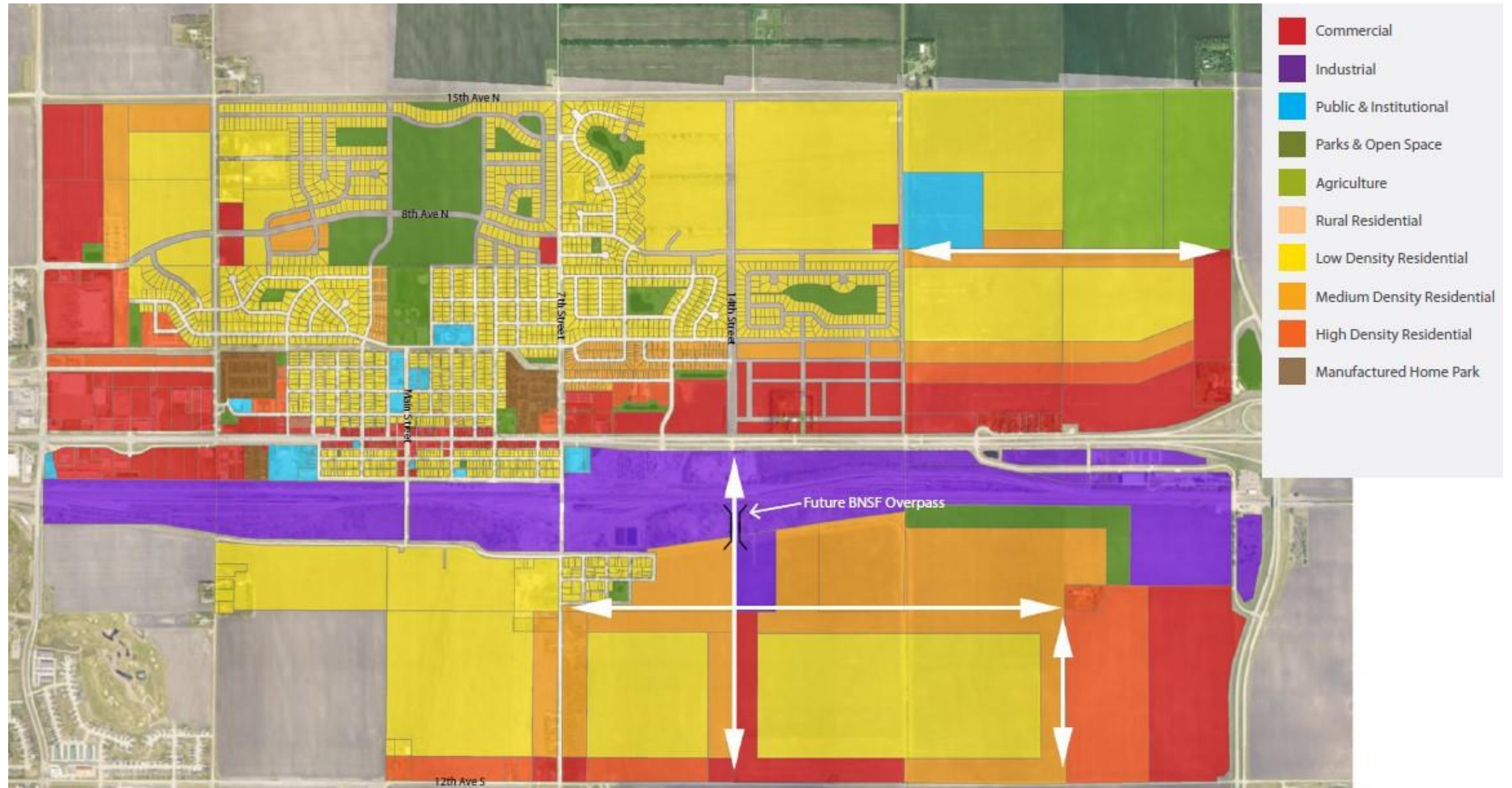
Pedestrian Level of Stress



Route 6



Planned Land Use



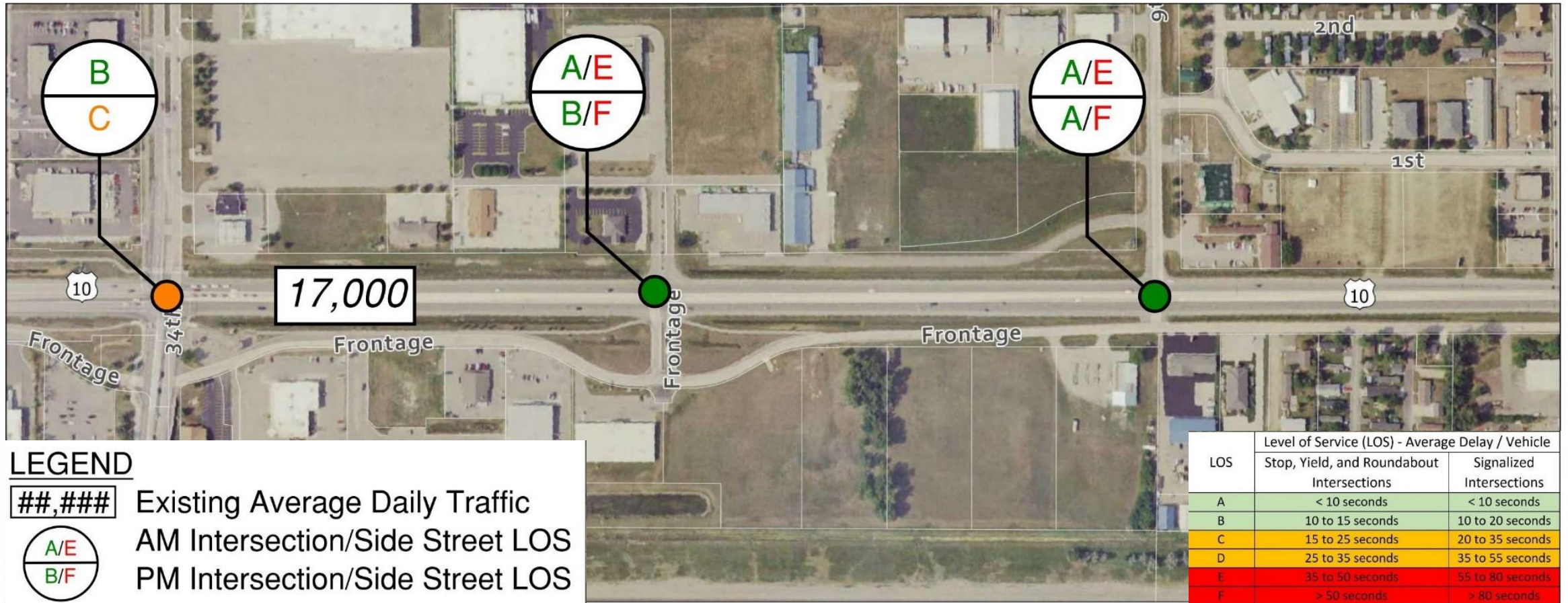
Traffic & Safety Analysis

Existing Traffic Conditions

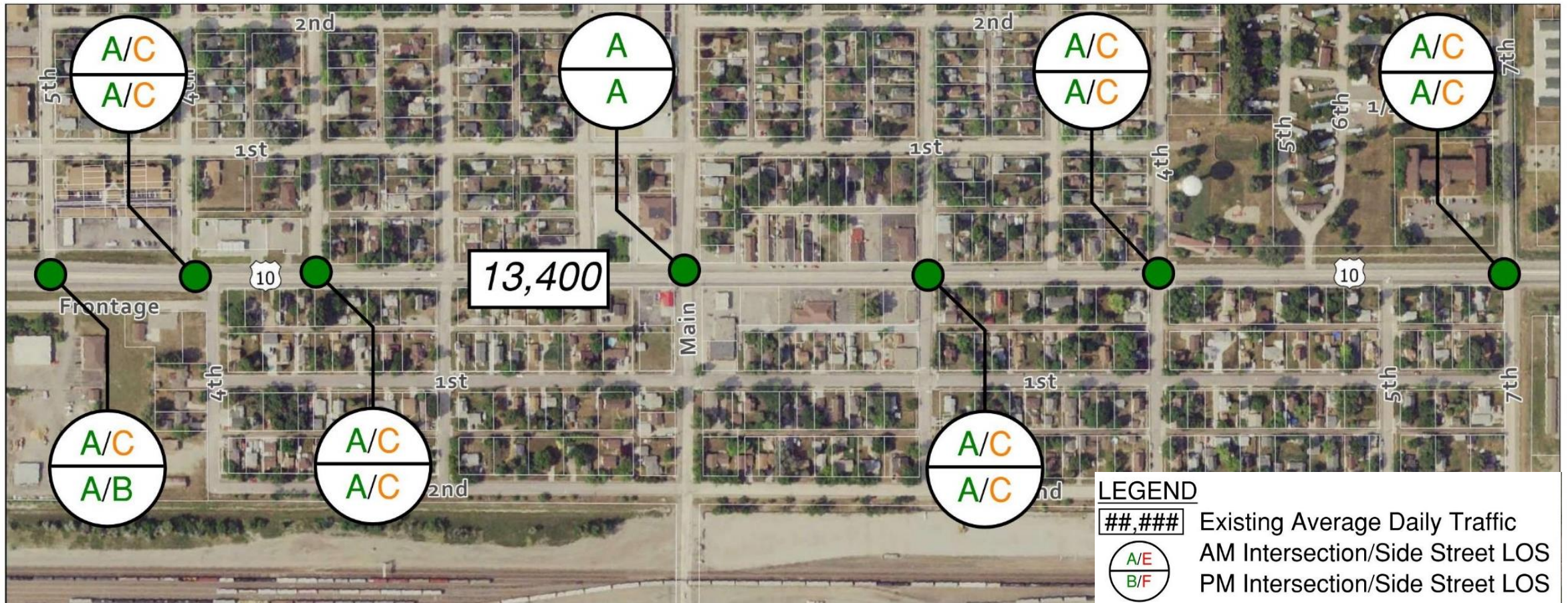
- Traffic Counts Collected at 6 Intersections
- Average Annual Daily Traffic (AADT)
- 5-year Crash History



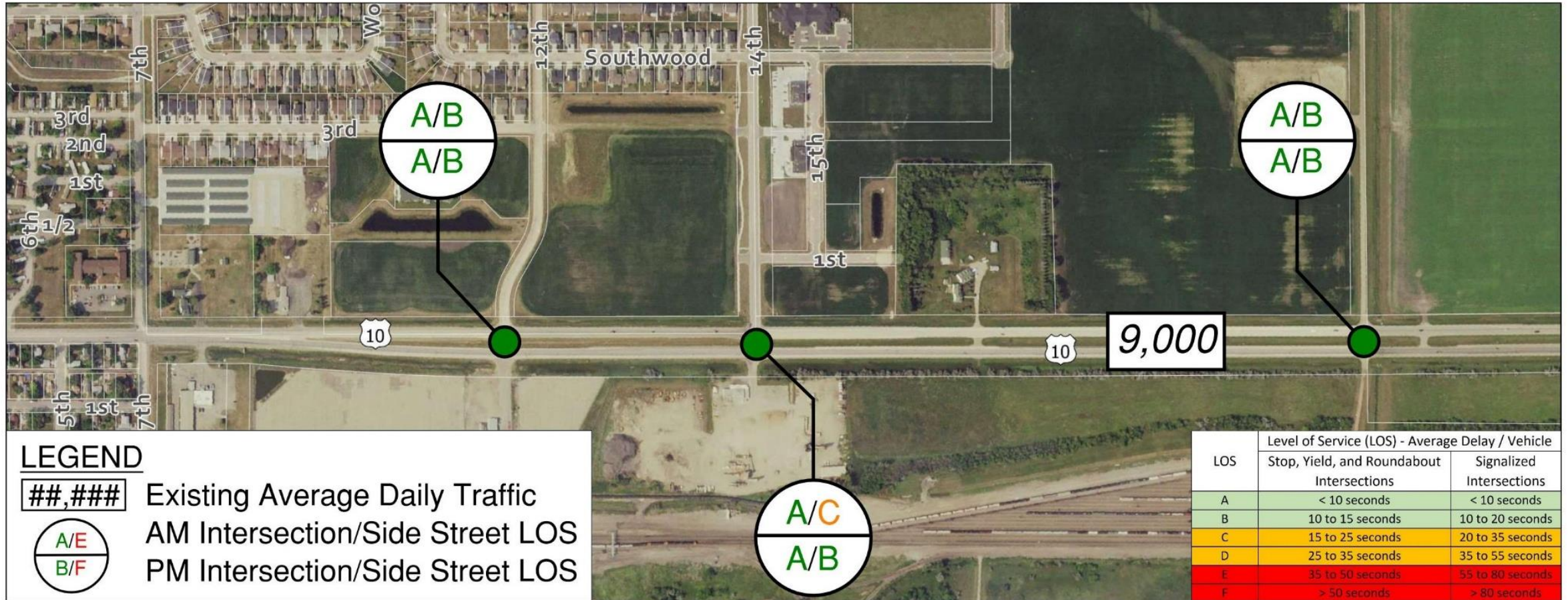
Zone 1 – AADT & Level of Service



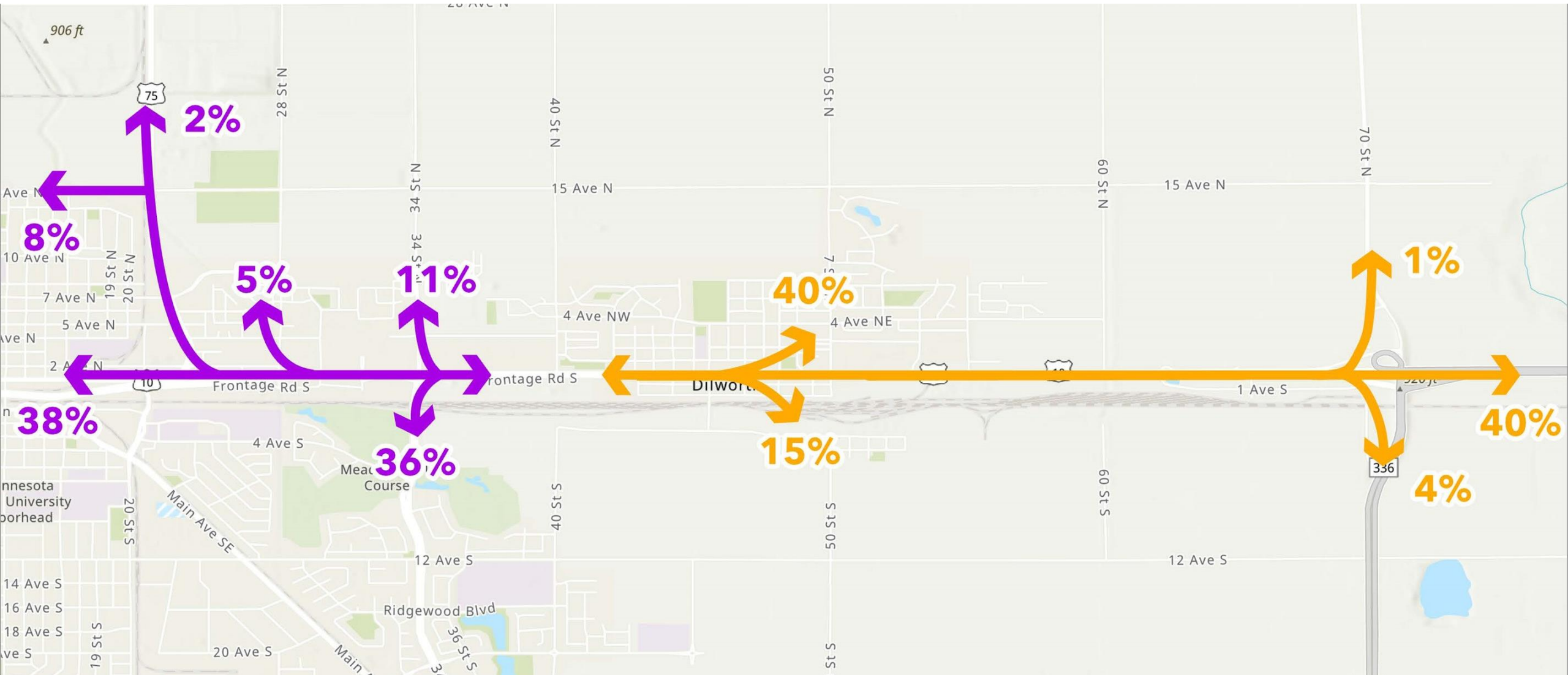
Zone 2 – AADT & Level of Service



Zone 3 – AADT & Level of Service

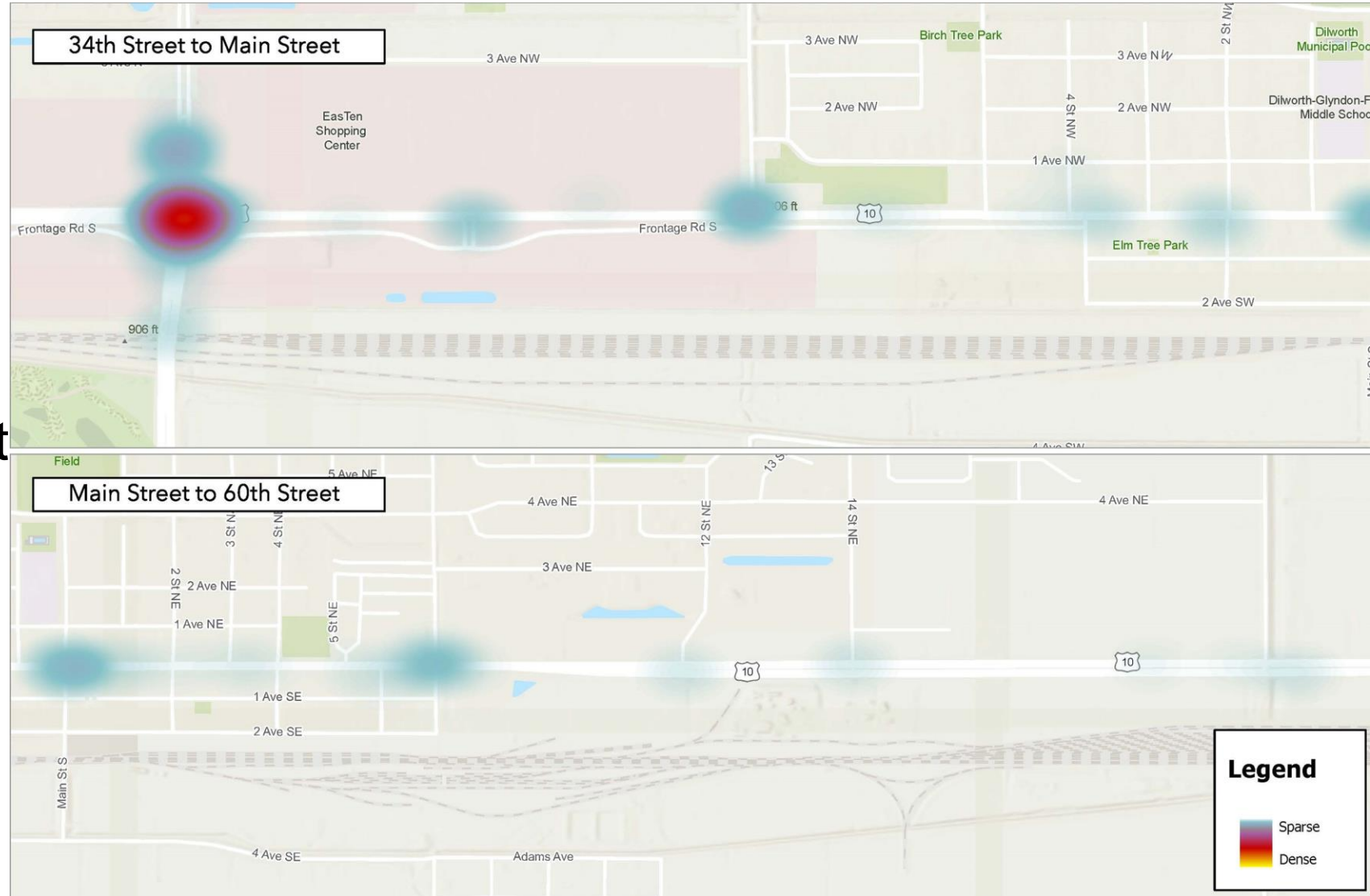


Travel Patterns



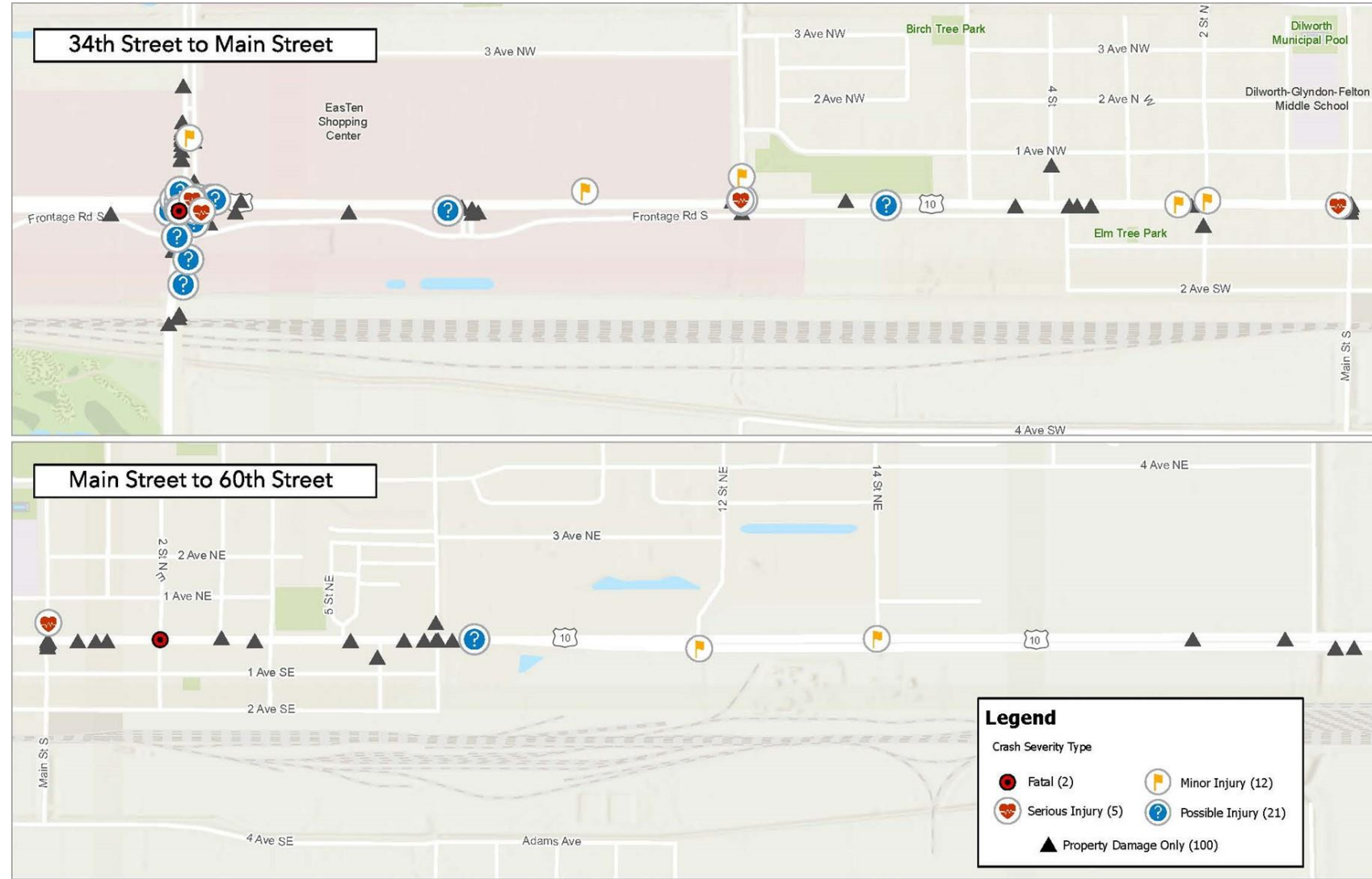
Crash Density

- 149 Total Crashes
(2017 – 2021)
- Over 60% of Crashes
Occurred at 34th Street
- No Other Intersection
Had More Than 10
Crashes



Crash Type and Severity

- Most Rear-End or Angle Crashes
- 70%+ Property Damage Only
- 2 Fatal Crashes



Study Schedule – Next Steps

Task	2022											2023	
	Mar	Apr	May	June	Jul	Aug	Sept	Oct	Nov	Dec	Jan	Feb	
Study Review Committee Meetings	1		2		3		4		5				
Public Input & Stakeholder Meetings					1				2				
Data Collection and Existing Conditions Analysis													
Traffic Projections and System Capacity Analysis													
Land Use, Redevelopment, and Urban Context													
Development and Assement of Alternatives													
Developmet and Approval of Final Study Report													

- Summer 2022 – Public Input, Traffic Projections, Land Use Analysis
- Fall 2022 – Alternative Development & Analysis, Public Input
- Winter 2022-2023 – Preferred Alternatives, Final Report

We Want to Hear From You!

Visit the project website - fmmetrocog.org/US10Dilworth



[About](#) [Committees](#) [Meetings + Events](#) [Projects + RFPs](#) [Get Involved](#) [Resources](#) [Contact Us](#)



US 10 | Dilworth Corridor Study

[HOME](#) [GET INVOLVED](#) [PROJECT MATERIALS](#)

Background Information

US Trunk Highway (TH) 10 through Dilworth is a critical regional corridor providing mobility across the State of Minnesota. US 10 serves as the de facto Main Street and gateway to the City of Dilworth and serves many of Dilworth's major businesses, recreational areas, schools, and communities of faith. While an asset for statewide mobility, US 10 can also be a barrier to north-south multimodal movements in the community. The US 10 Corridor Study through Dilworth provides the City of Dilworth the opportunity to balance the needs of the Minnesota Department of Transportation's (MnDOT) statewide mobility goals with the local safety and multimodal needs of the city.

Project Objective

In line with the city's vision from Dilworth 2045, the city's comprehensive plan, this study will evaluate the urbanization of US 10 with an emphasis on multi-modal facilities. As a corridor through the traditional downtown core of Dilworth, US 10 supports many needs for the community of Dilworth and the surrounding area. This study will consider options for downtown Dilworth by developing a detailed understanding of



We Want to Hear From You!

- Brent Muscha – Apex Project Manager
 - brent.muscha@apexenggroup.com
 - 701-373-7966
- Michael Maddox – Metro COG Project Manager
 - maddox@fmmetrocog.org
 - 701-532-5104

We Want to Hear From You!

- www.pollev.com/brentm450



Why is Highway 10 (Center Avenue) in Dilworth important to you?

I live along Highway 10

I work along Highway 10

I use Highway 10 to commute

I use Highway 10 on the weekends

What is your primary mode of transportation on Highway 10

Car/Truck

Bicycle

Walking

Transit

Freight/Delivery Truck

Should there be more or less parking on Highway 10?

More

Less

Don't change
the parking

🌐 When poll is active, respond at **pollev.com/brentm450**

📱 Text **BRENTM450** to **22333** once to join

What improvements are needed the most? (select all that apply)

Speed up traffic flow (reduce congestion)

Slow traffic down (reduce lanes)

Better sidewalks and crosswalks

More parking

Easier access turning on to Hwy 10

More landscaping

Powered by  **Poll Everywhere**

Start the presentation to see live content. For screen share software, share the entire screen. Get help at pollev.com/app

What is your biggest concern on Highway 10?

Top

Powered by  **Poll Everywhere**

Start the presentation to see live content. For screen share software, share the entire screen. Get help at pollev.com/app

Questions?