

2021 Bicycle and Pedestrian Count Report

Counts located in: West Fargo, Fargo, Moorhead, Dilworth
Data from 2013—2020



Prepared by:

The Fargo-Moorhead Metropolitan Council of Governments

METROCOG
FM REGIONAL TRANSPORTATION PLANNING ORGANIZATION

April, 2021

2021 Bicycle and Pedestrian Count Report

Report background

The Fargo-Moorhead Metropolitan Council of Governments (Metro COG) is the designated metropolitan planning organization for the Fargo-Moorhead metro area. A major responsibility of Metro COG's efforts is transportation planning which includes planning for bicycle and pedestrian facilities. Understanding the demand for bicycle and pedestrian facilities allows local units of government and Metro COG to plan for future bicycle and pedestrian use in the area. This report details both manual and automated counts taken since 2013 and 2014 respectively.

This area left intentionally blank

Automated Counts
2014—2020

Automated Counts

Metro COG Counters

A total of five automated counters are placed at various locations in the Fargo-Moorhead Metro Area. The five counters are TRAFx G3 Infrared Trail Counters. Below is a description of the counter locations.

- Broadway west sidewalk just south of 2nd Ave N, Downtown Fargo
- Eagle Run Neighborhood Trail between Rendezvous Park and 9th St W, West Fargo
- Lindenwood Park / Gooseberry Park bicycle & pedestrian bridge, Fargo/Moorhead
- Milwaukee Trail between 35th Ave S and 37th Ave S, Fargo
- Oak Grove Park / Memorial Park bicycle & pedestrian bridge, Fargo/Moorhead

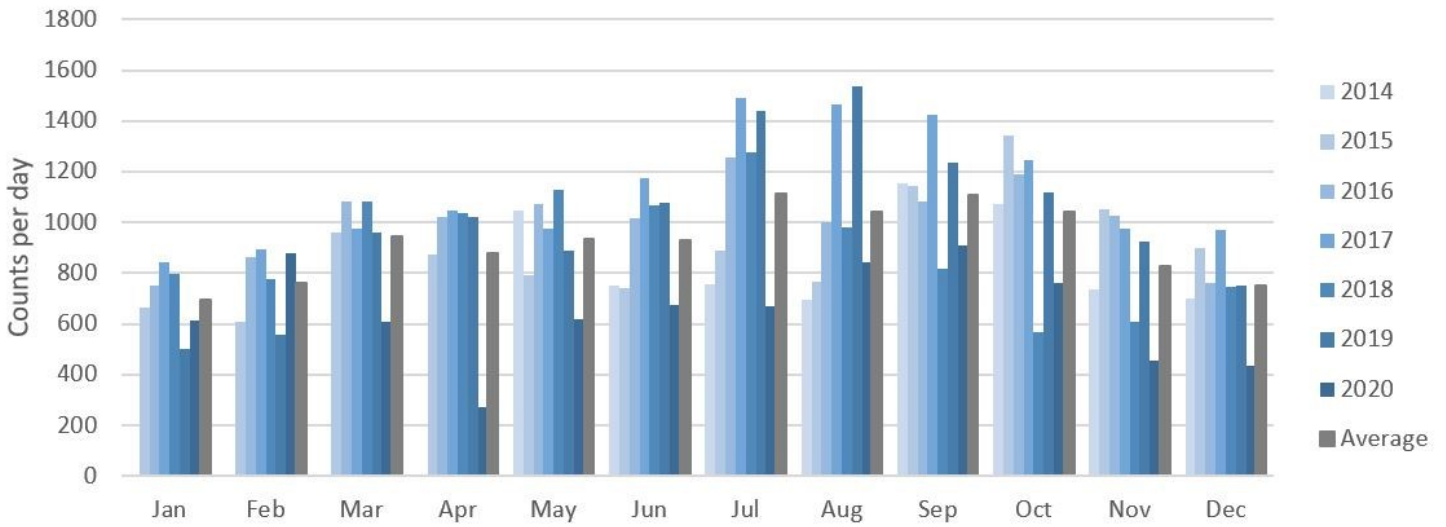
These counters count passer-byers 7 days a week, 24 hours a day, 365 days a year. It is important to note that these counters are not capable of differentiating between bicyclists and pedestrians. In addition, if two or more people are walking/biking side-by-side, the counter often records the group as one individual. Therefore, actual counts are higher than recorded. In 2020 Metro COG conducted a study to determine how many people actually passed by a counter versus the number recorded by the counter. The counter located along the Milwaukee Trail showed that 1.44 times more people actually passed by the counter than were recorded. The counter located on Broadway showed 1.77 times more people passed by than were recorded by the counter. Since not all automated counters were studied, and for data consistency, these multipliers are not incorporated in the data shown in this report.

MnDOT Counter

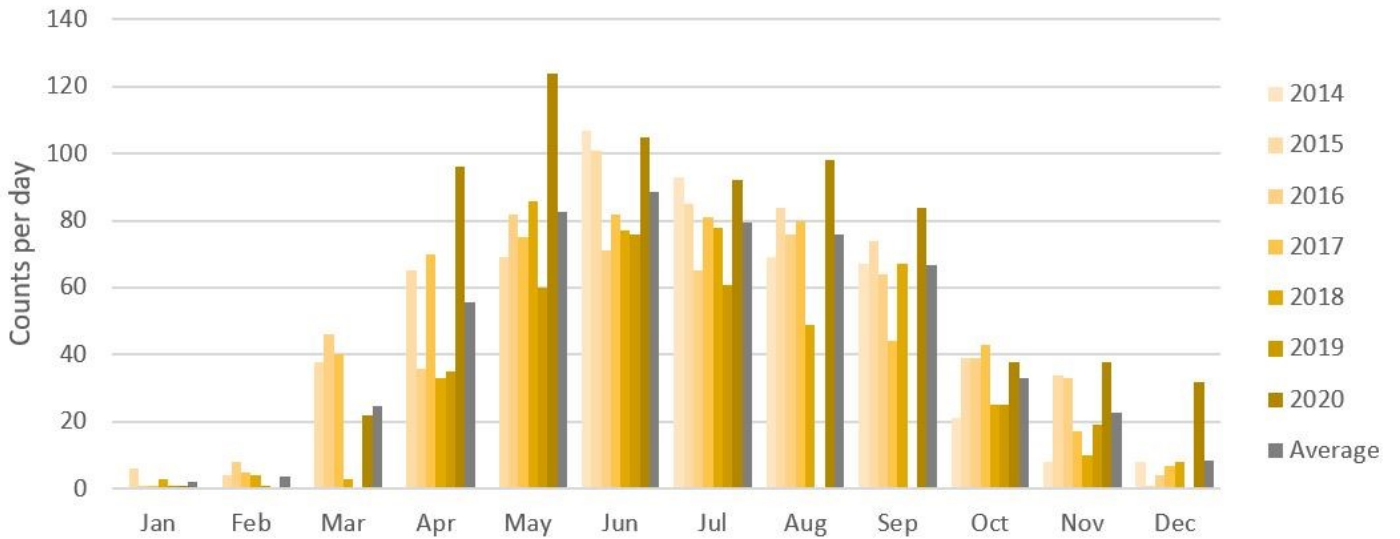
The Minnesota Department of Transportation (MnDOT) installed an automated counter in 2016 when the I-94 interchange at 8th St (US 75) was reconstructed. The counter is made by EcoCounter and uses both infrared technology and inductive pavement loop detection, allowing the counter to differentiate between bicycles and pedestrians. In addition, this counter is capable of detecting both directions of travel on the path. This counter is located on & along the shared use path on the east side of 8th St just north of the I-94 westbound off-ramp. The counter is one of 22 bicycle/pedestrian counters located across Minnesota.

The following pages show the monthly count data per counter along with an overall comparison of counts per location annually.

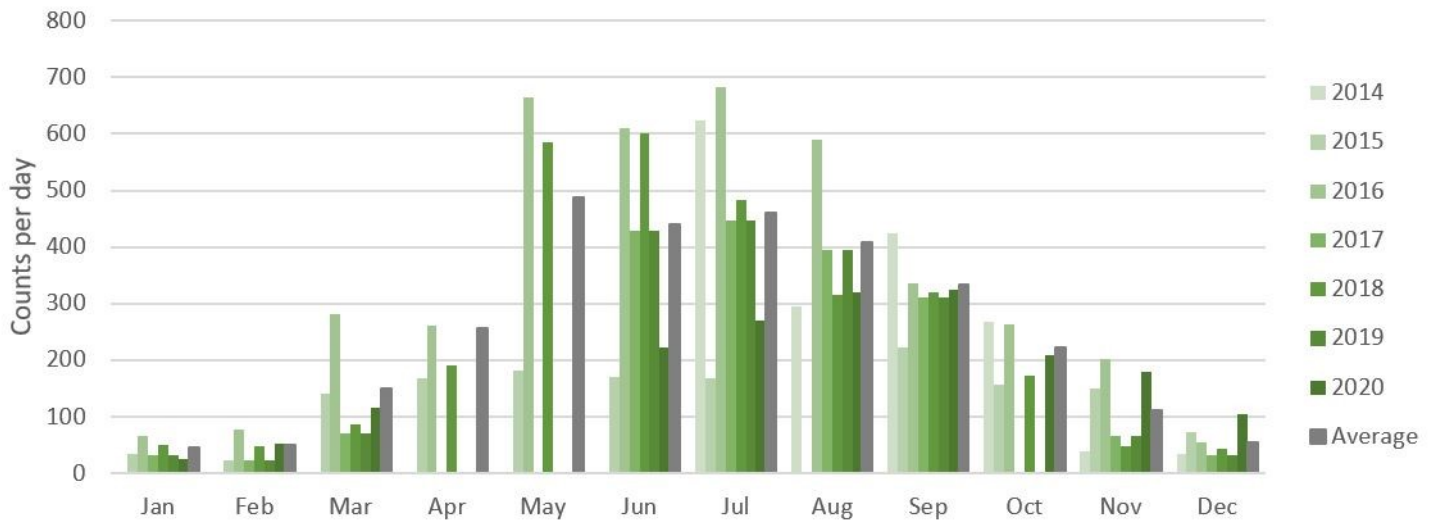
Broadway Sidewalk - Just S. of 2nd Ave N



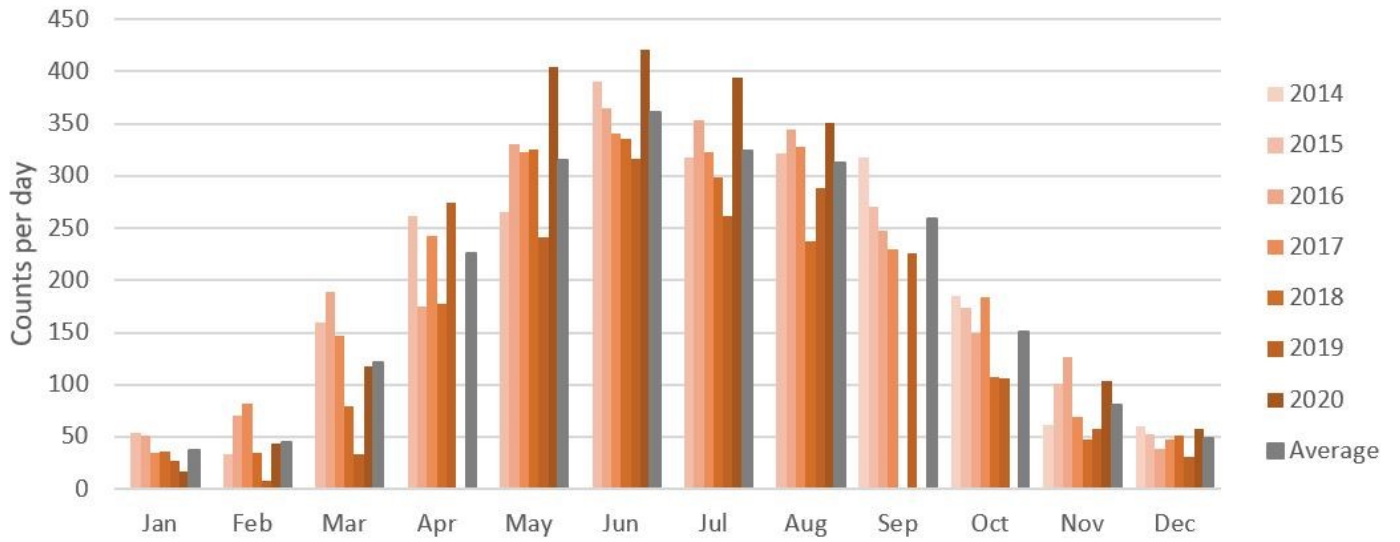
Eagle Run Trail



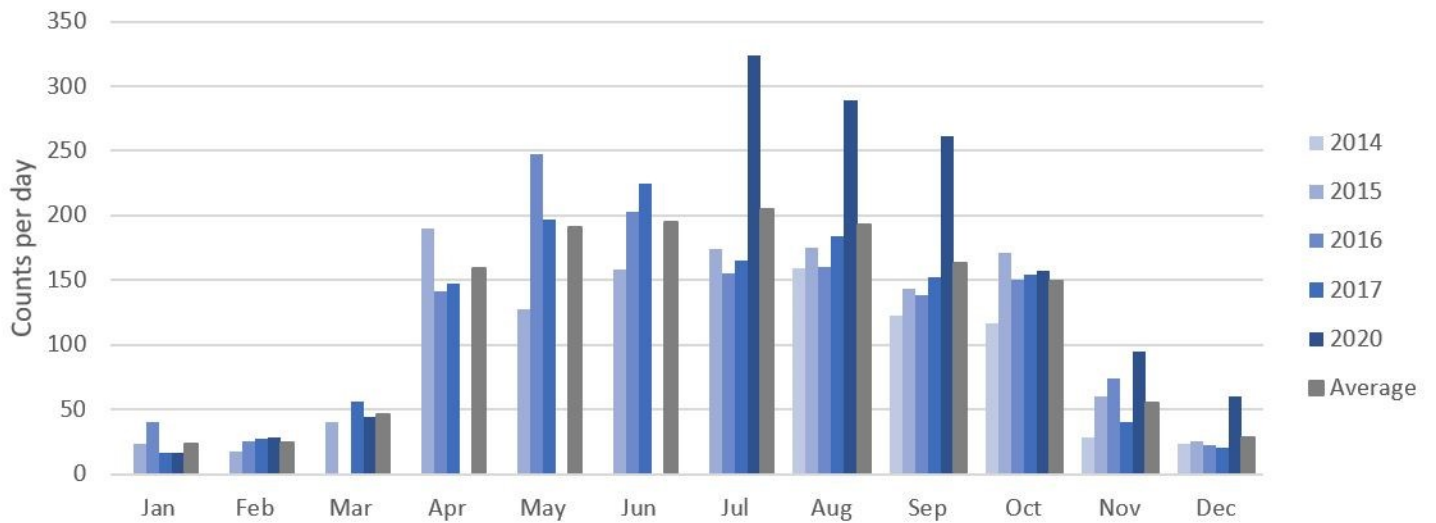
Lindenwood/Gooseberry Park Bridge



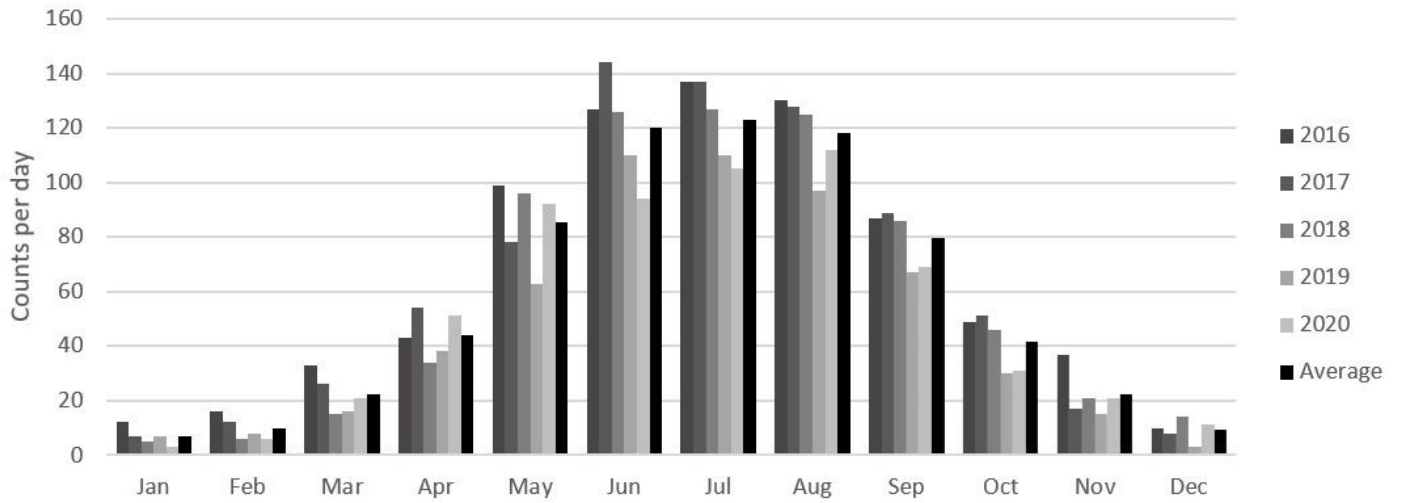
Milwaukee Trail



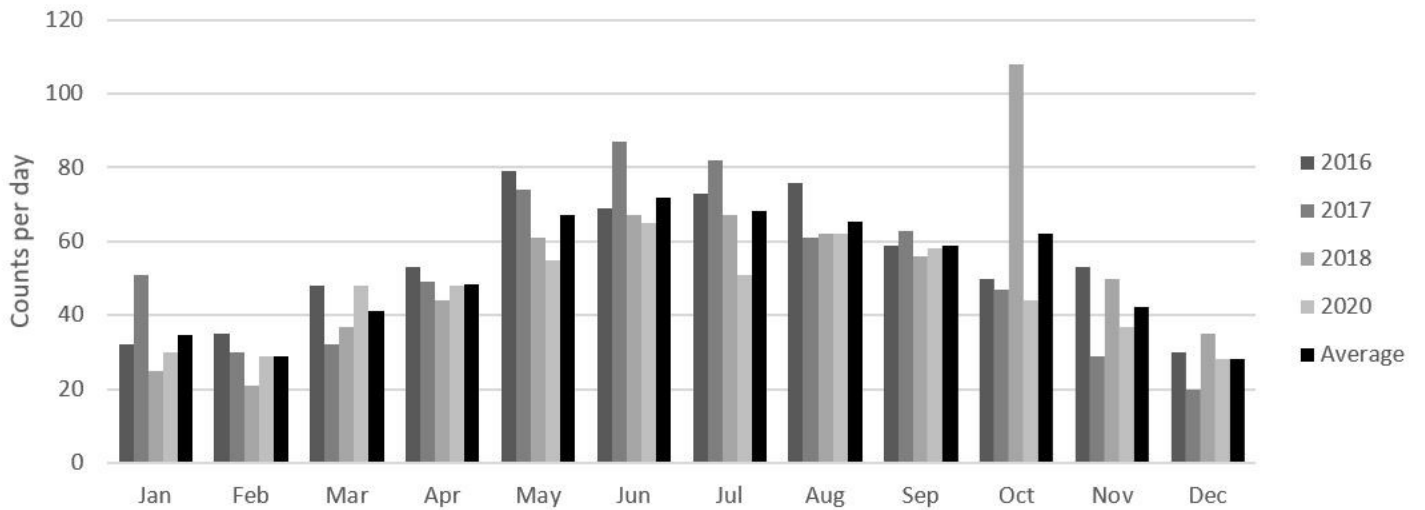
Oak Grove/Memorial Park Bridge



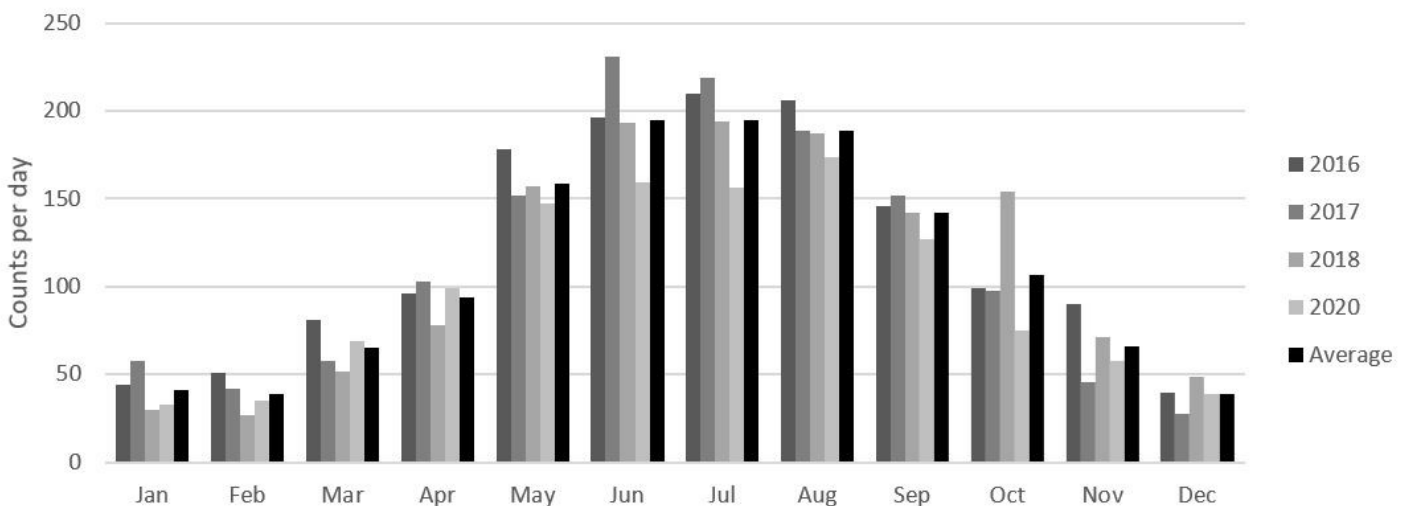
Moorhead 8th St Trail crossing I-94 - Bicycles



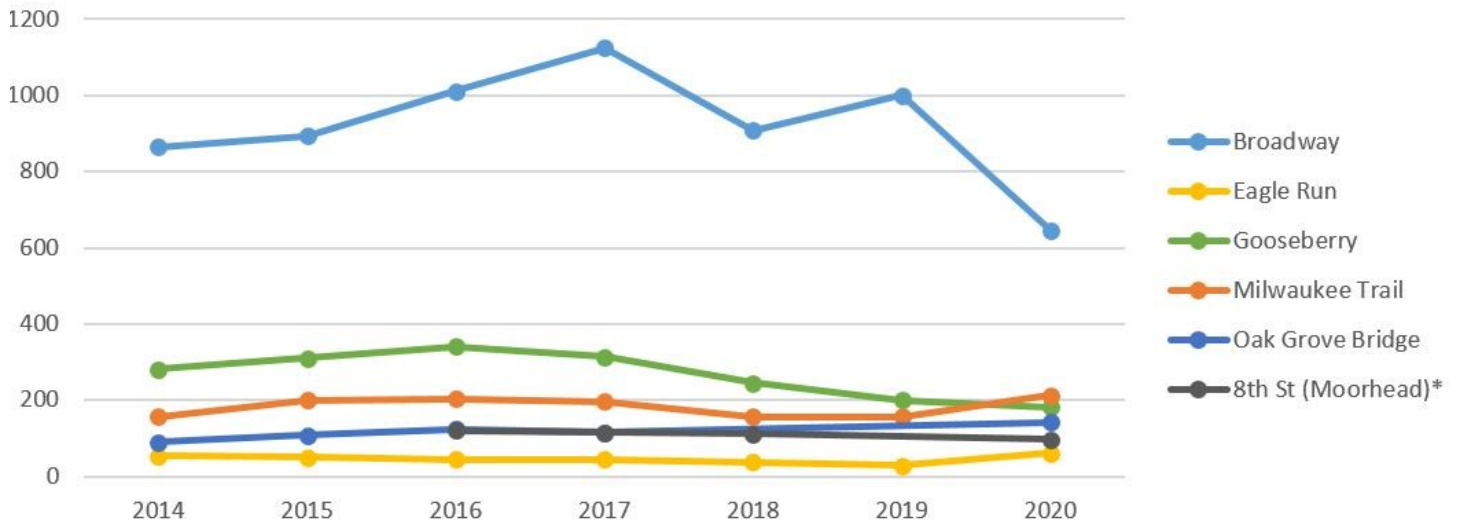
Moorhead 8th St Trail crossing I-94 - Pedestrians



Moorhead 8th St Trail crossing I-94 - Bike & Pedestrians



Average Annual Daily Counts



* Includes both bicycle & pedestrian counts

Average Annual Daily Counts

	2014	Δ 14-15	2015	Δ 15-16	2016	Δ 16-17	2017	Δ 17-18	2018	Δ 18-19	2019	Δ 19-20	2020	Average Change(Δ)/year
Broadway	865	3%	894	13%	1011	11%	1124	-19%	908	10%	1001	-35%	646	-3%
Eagle Run Trail	53	-6%	50	-13%	44	4%	45	-19%	37	-25%	28	119%	61	10%
Gooseberry Bridge	281	11%	311	10%	341	-8%	315	-22%	245	-18%	201	-9%	183	-6%
Milwaukee Trail	156	28%	200	1%	203	-4%	196	-20%	157	-1%	156	36%	212	7%
Oak Grove Bridge	90	21%	109	13%	123	-7%	115	-	-	-	-	23%	142	13%
8th St (Moorhead)*	-	-	-	-	120	-4%	115	-3%	111	-	-	-12%	98	-7%

*Includes both bicycle & pedestrian counts

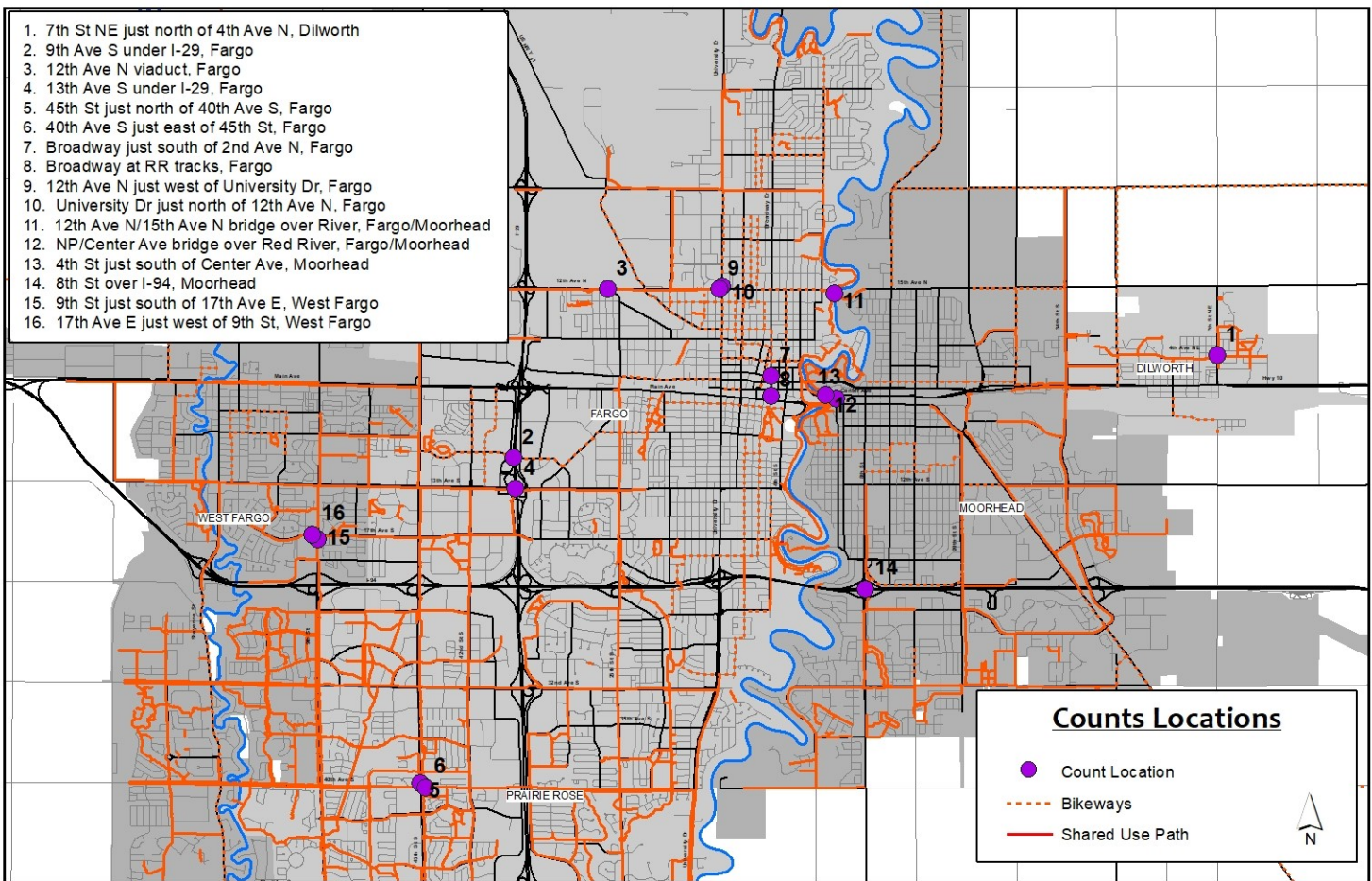
Manual Counts
2013—2020

Manual Counts

Manual counts are conducted once a year for a four-hour period on a typical weekday in September (Note: locations near NDSU campus are counted for a five-hour period). Based on availability of staff and resources some locations are counted for two consecutive weekdays to increase accuracy. The counts are taken at 16 locations in the Fargo-Moorhead Metro Area. These counts differentiate between pedestrians, bicyclists on the path/sidewalk, and bicyclists on the street where applicable. Poor weather conditions are avoided in order to provide a consistent count platform. However, variations in weather do occur which likely have some effect on the number of bicyclists and pedestrian from year to year.

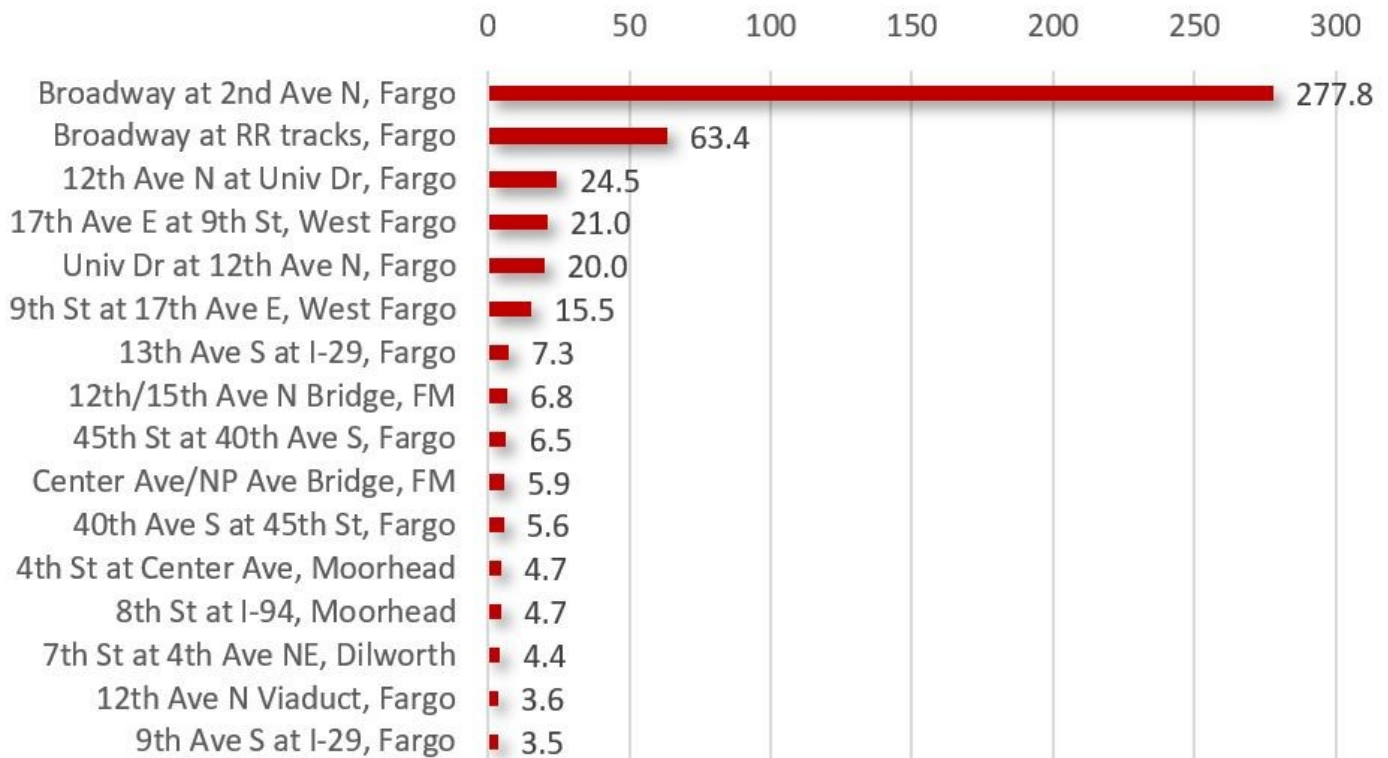
The count data shown in this section of the report includes years 2013 through 2020, however several locations may not include all years due to previous counting mythology, construction, or equipment failure. Below is a map showing the location of each manual count:

Manual Count Locations

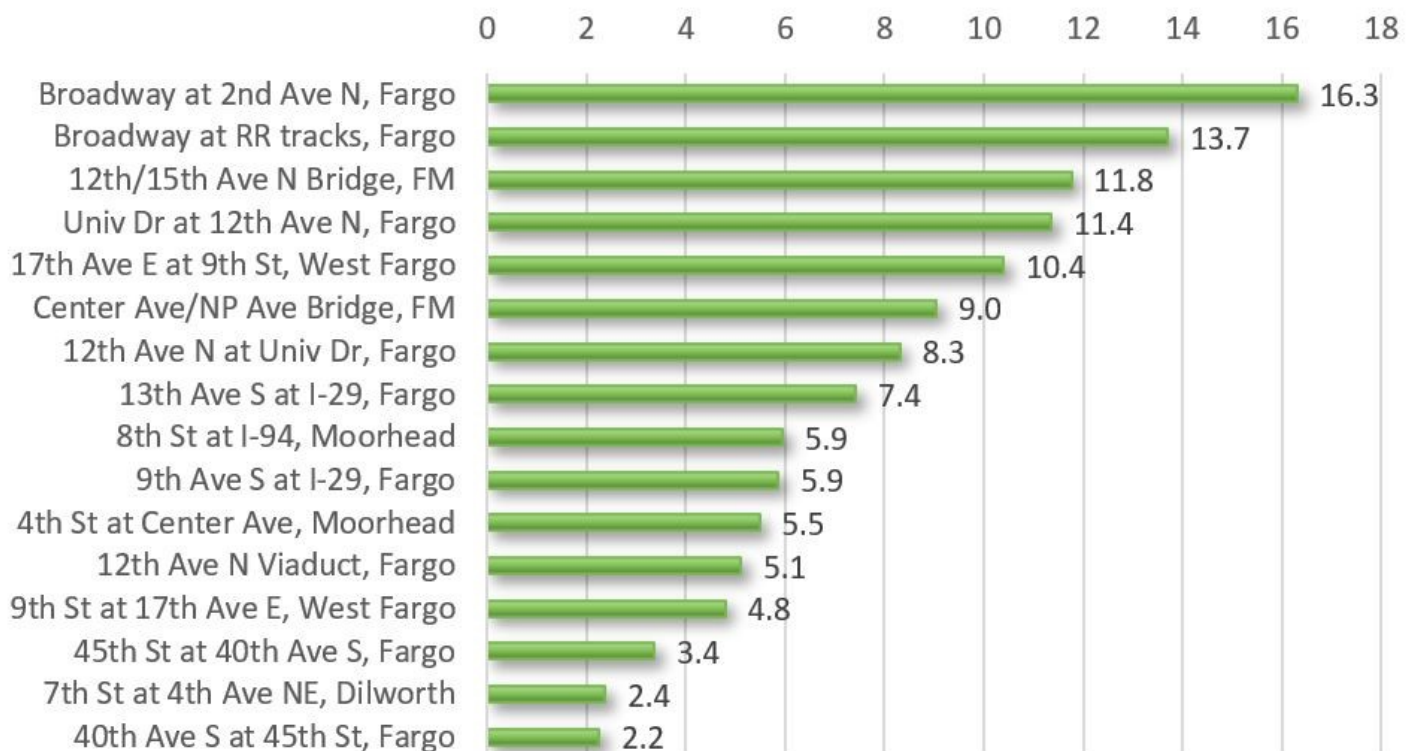


The following pages show the manual bicycle and pedestrian count data for the years 2013 through 2019.

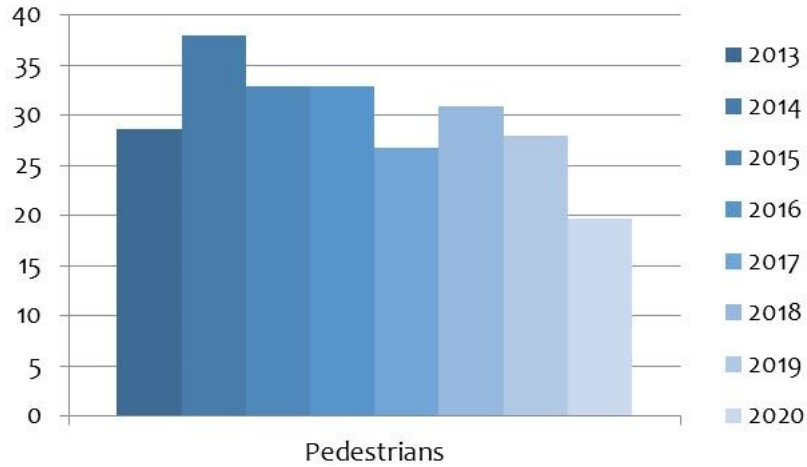
Pedestrians per hour (Average of years 2013 - 2020)



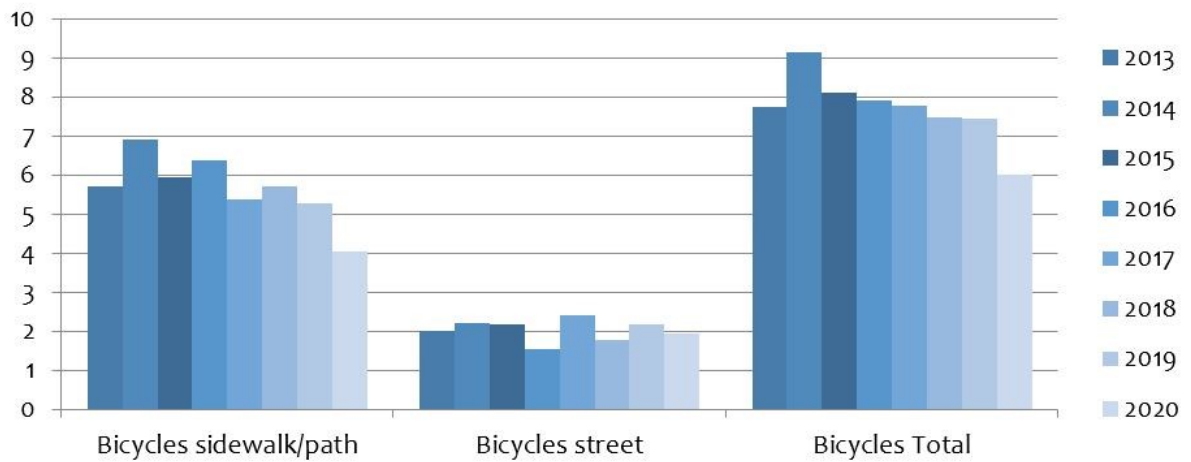
Bicycles per hour (Average of years 2013 - 2020)



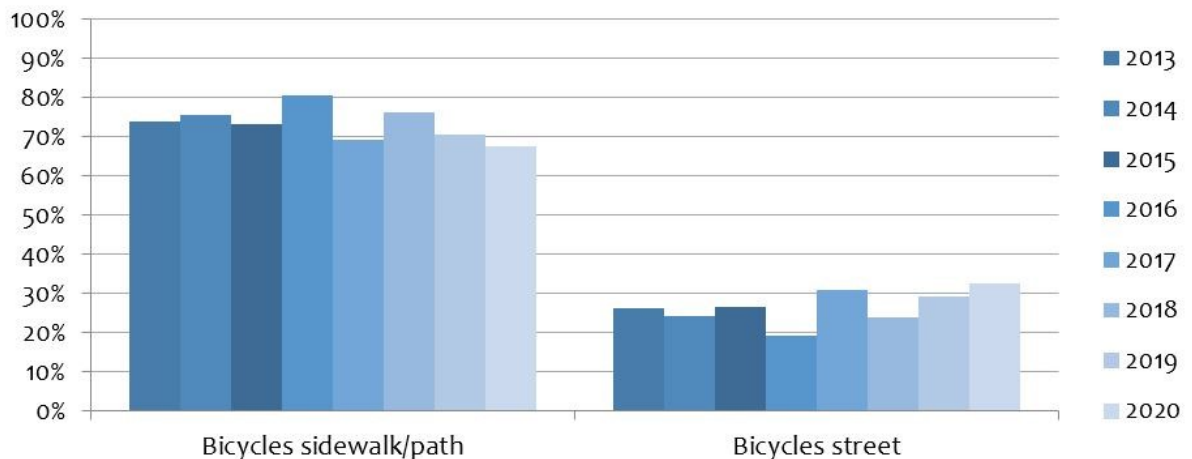
Pedestrian counts per hour by year (average of all locations)



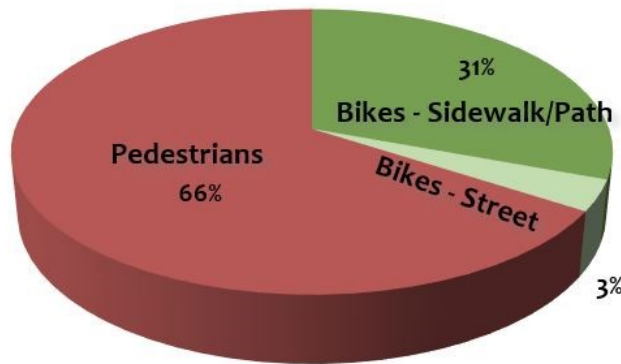
Bicycle counts per hour by year (average of all locations)



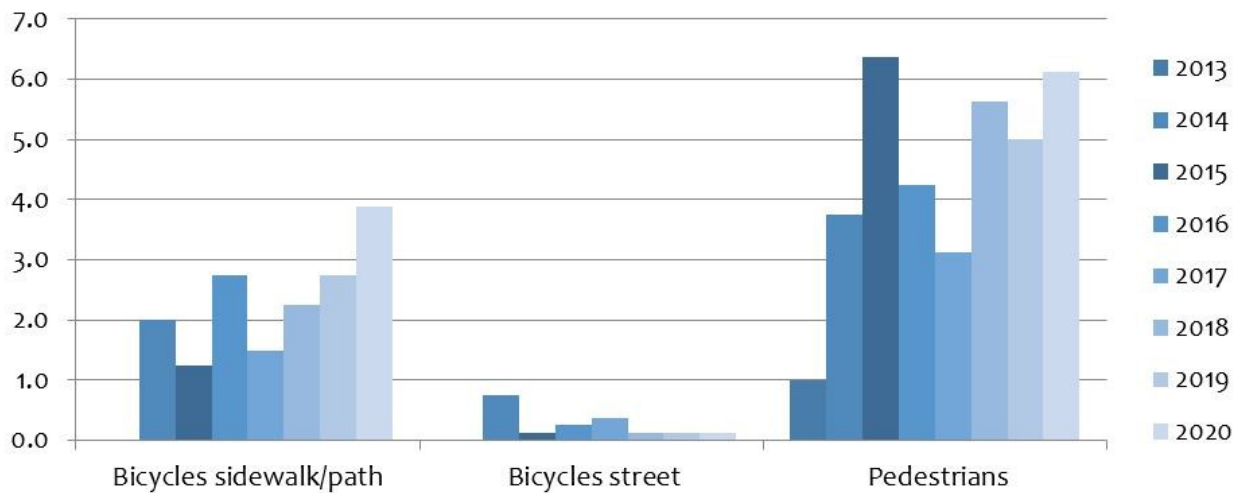
% of bikes on sidewalk/path vs. bikes on street (average of all locations)



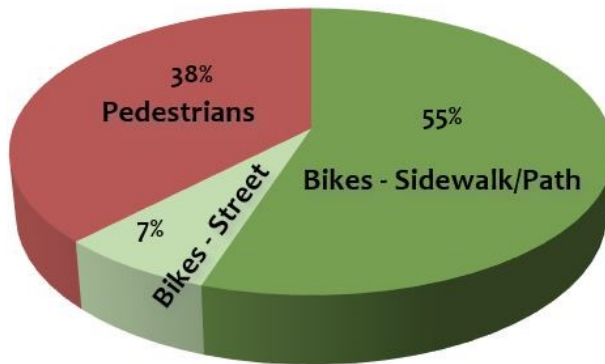
Dilworth—7th St NE just north of 4th Ave NE (Average of years 2013-2020)



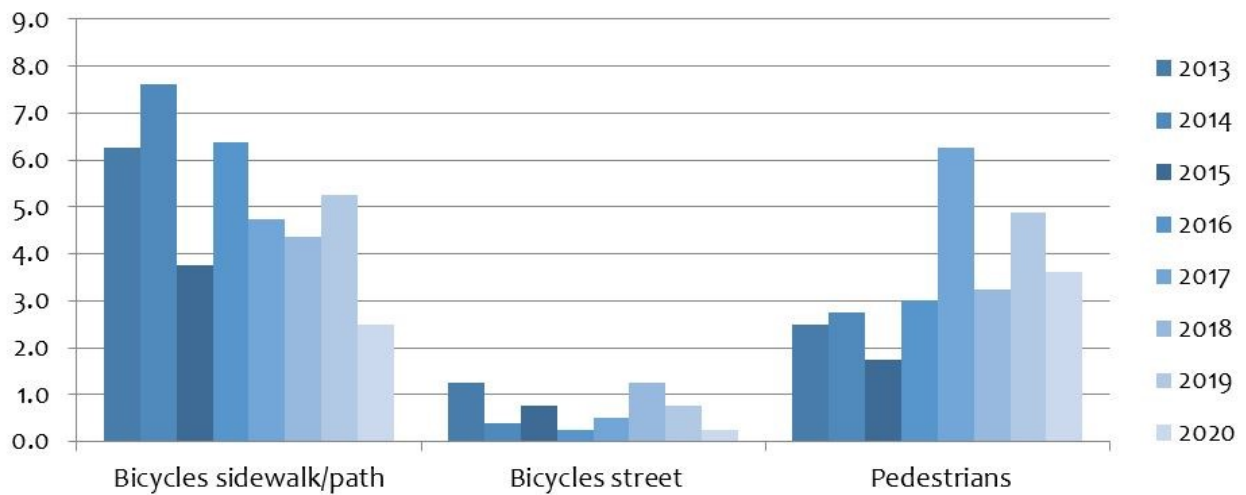
Counts per hour



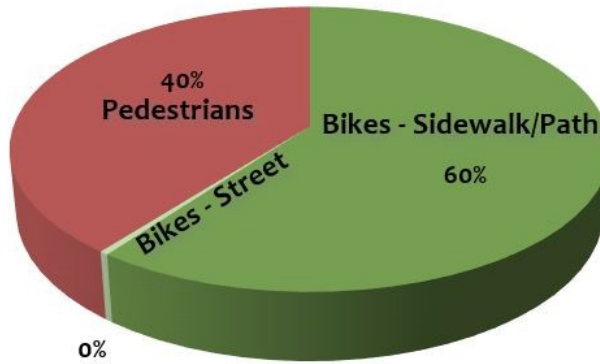
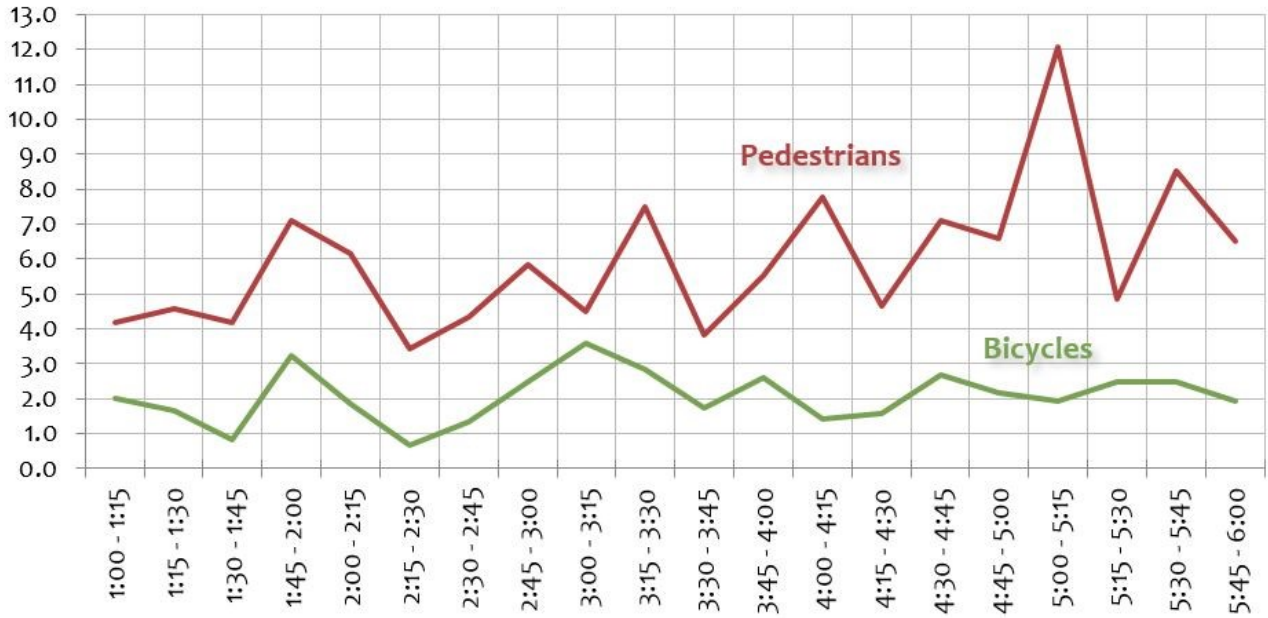
Fargo—9th Ave S under I-29 (Average of years 2013-2020)



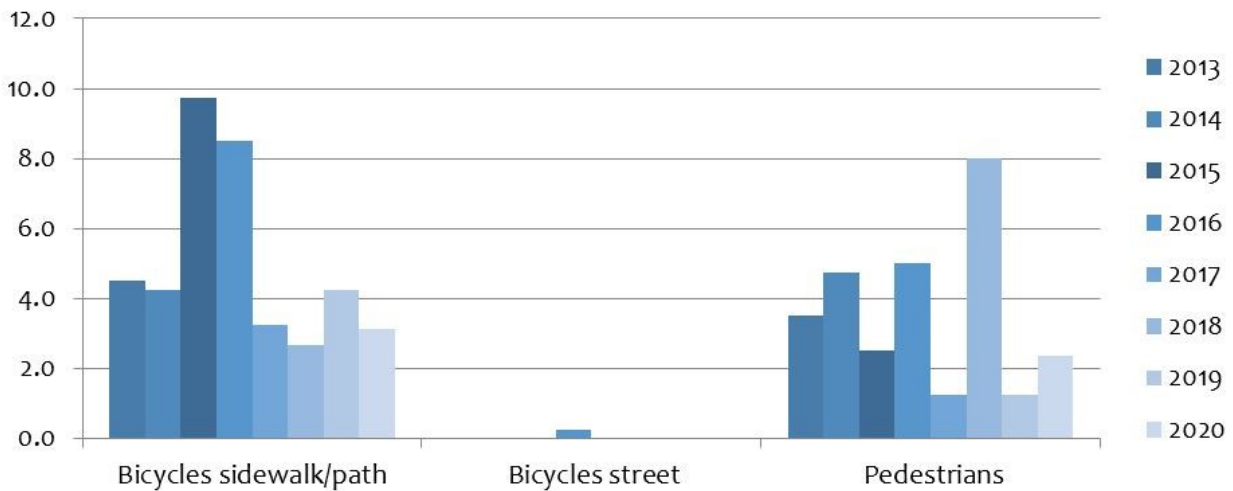
Counts per hour



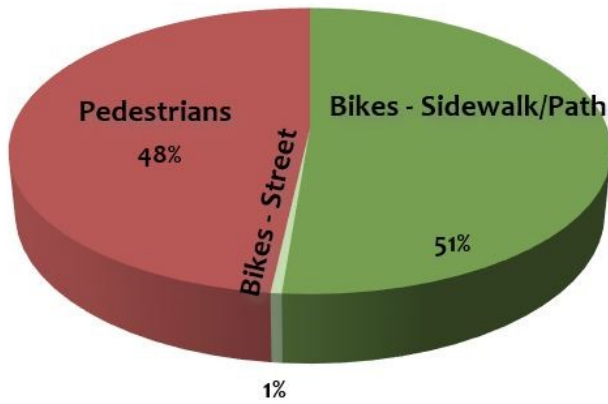
Fargo—12th Ave N viaduct (between 19th St & 29th St) (Average of years 2013-2020)



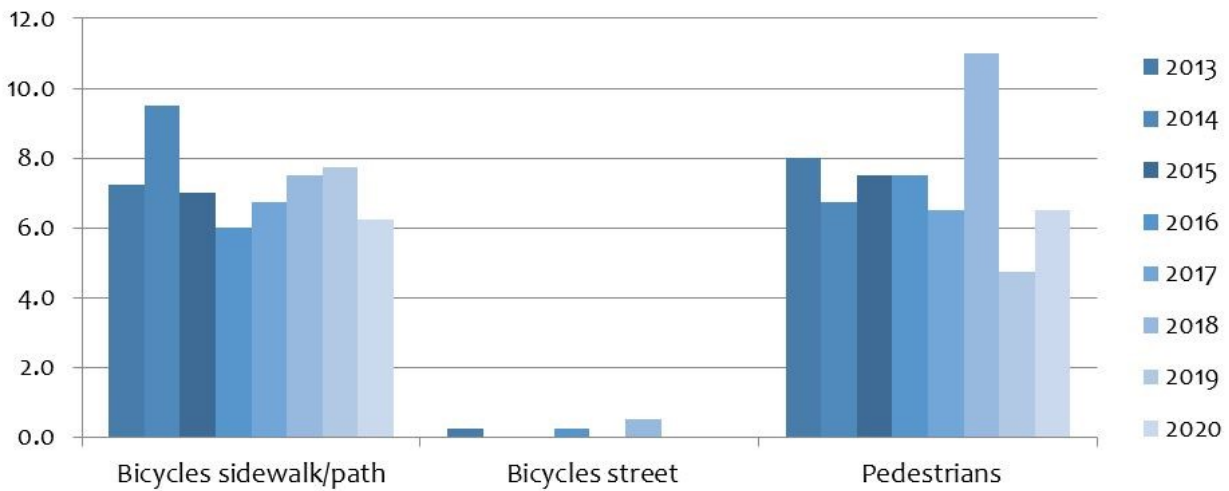
Counts per hour



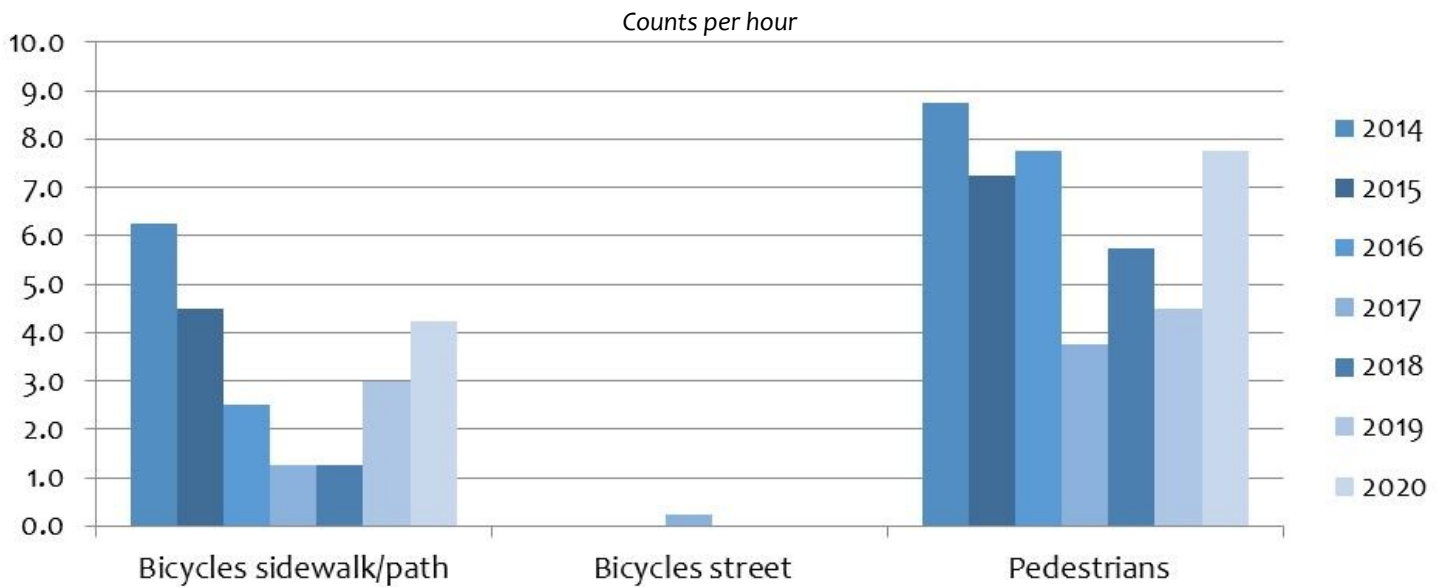
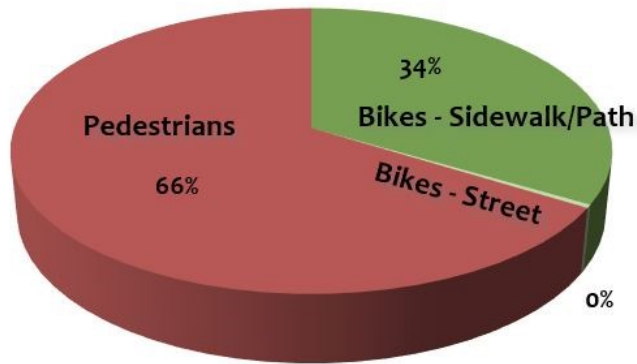
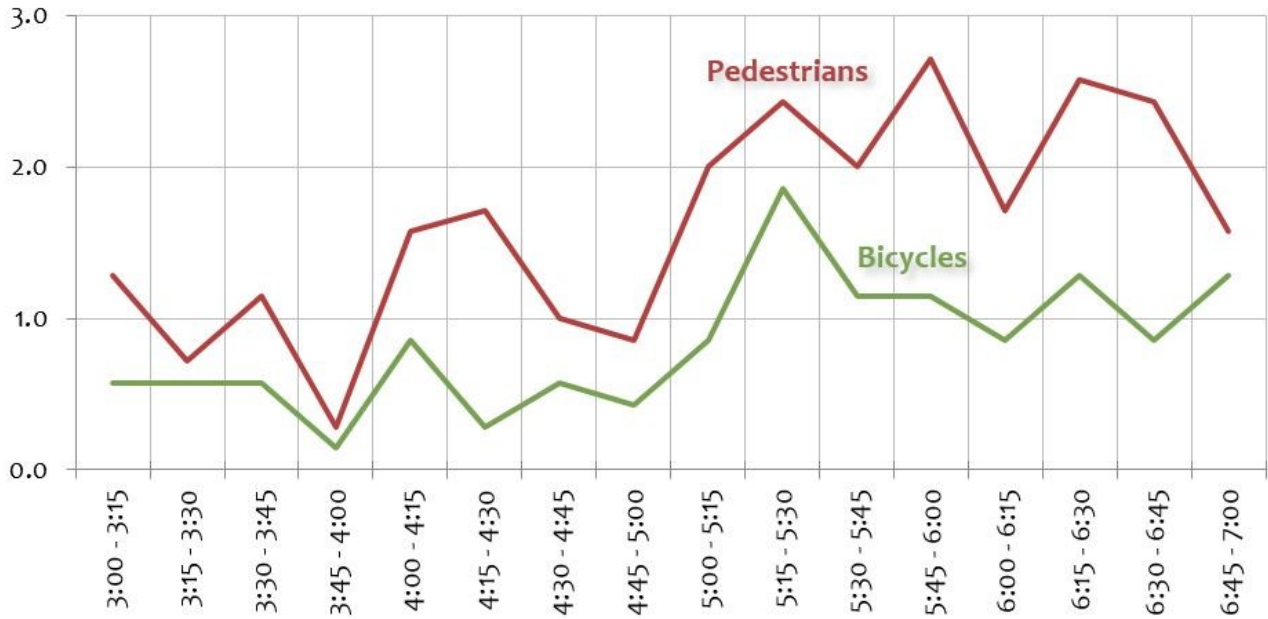
Fargo—13th Ave S under I-29 (Average of years 2013-2020)



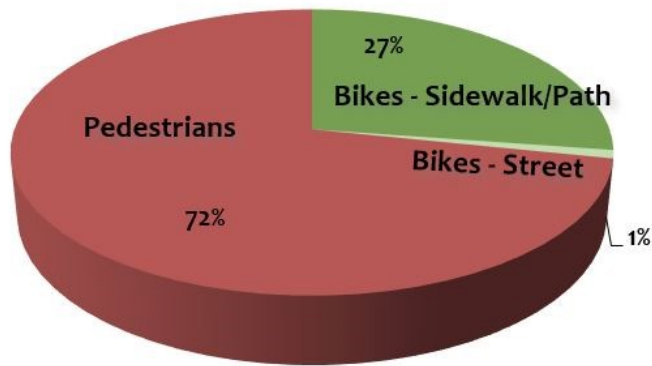
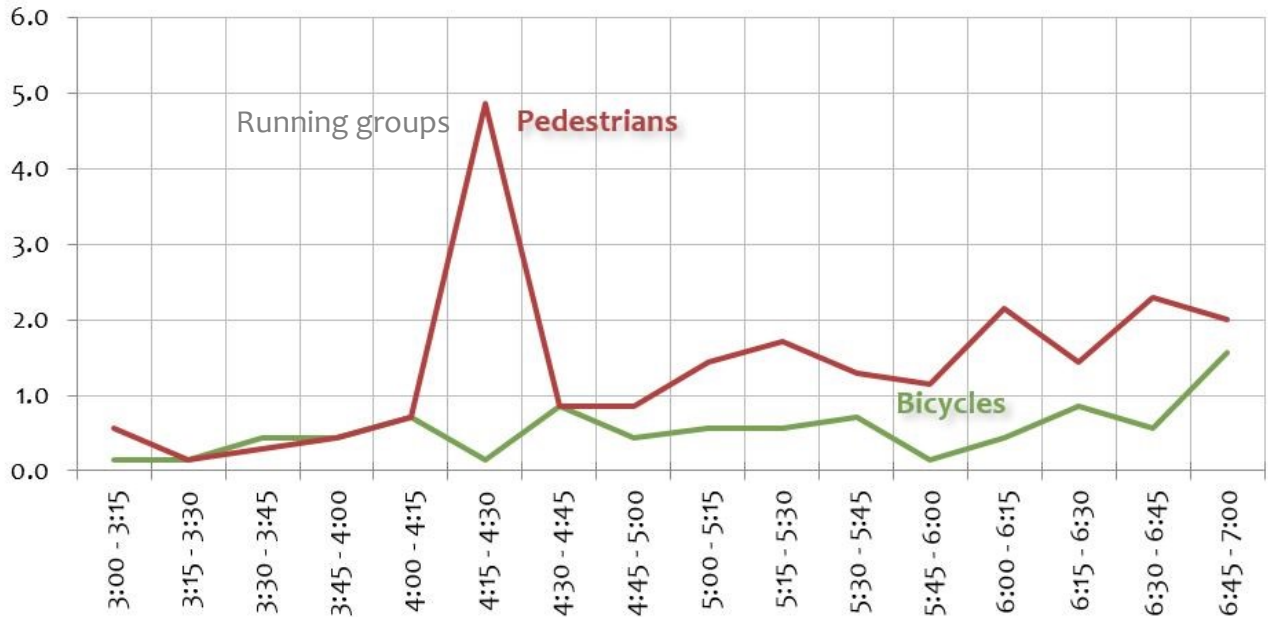
Counts per hour



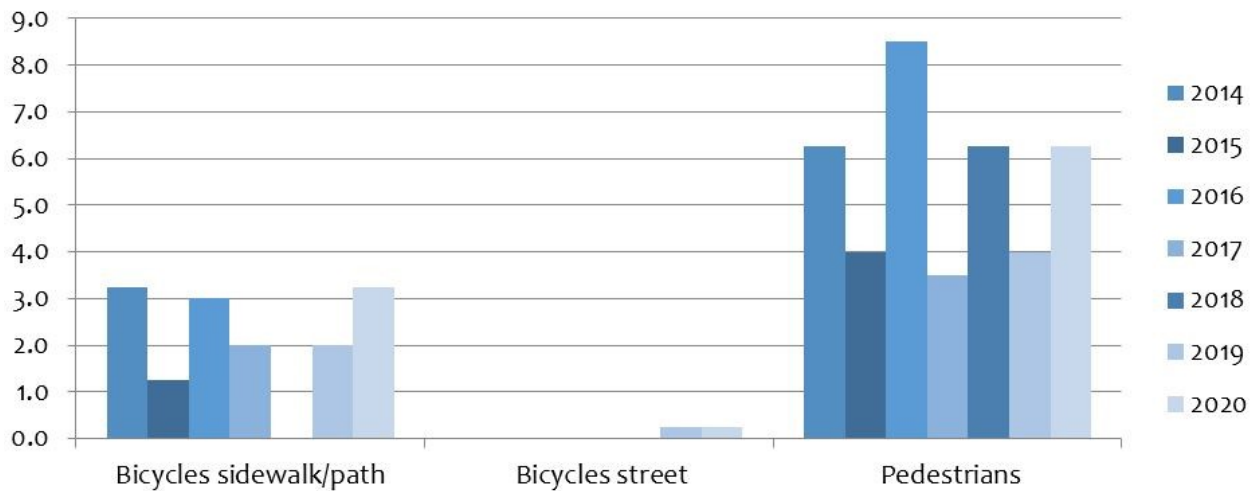
Fargo—45th St just north of 40th Ave S (Average of years 2014-2020)



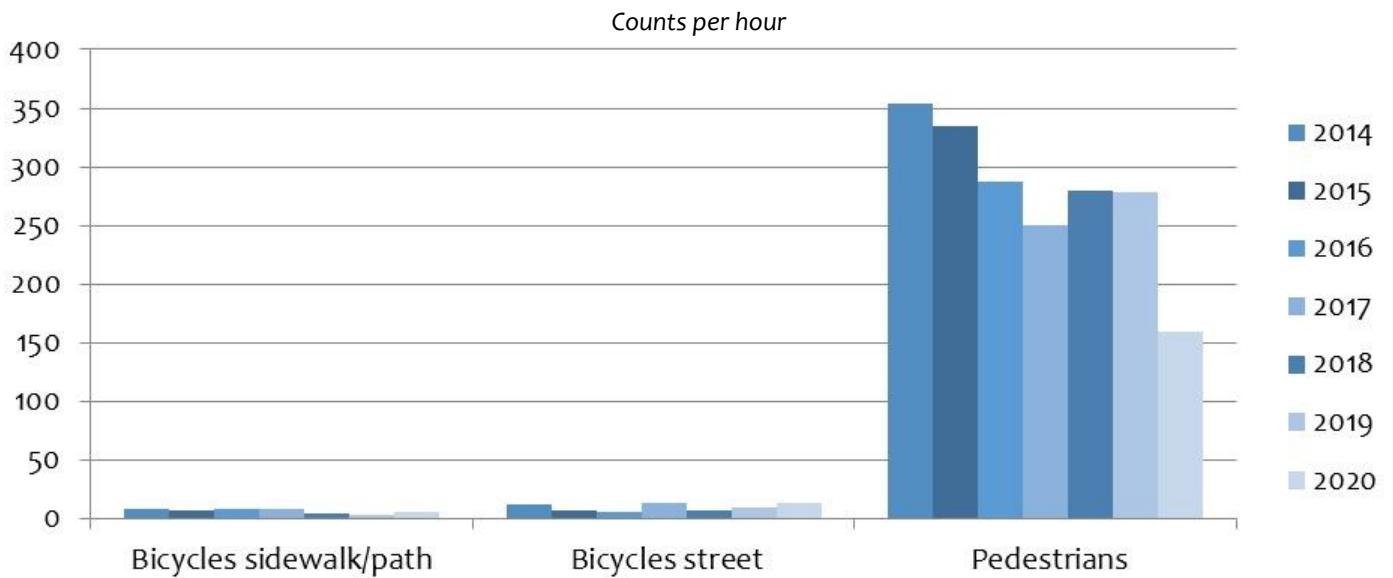
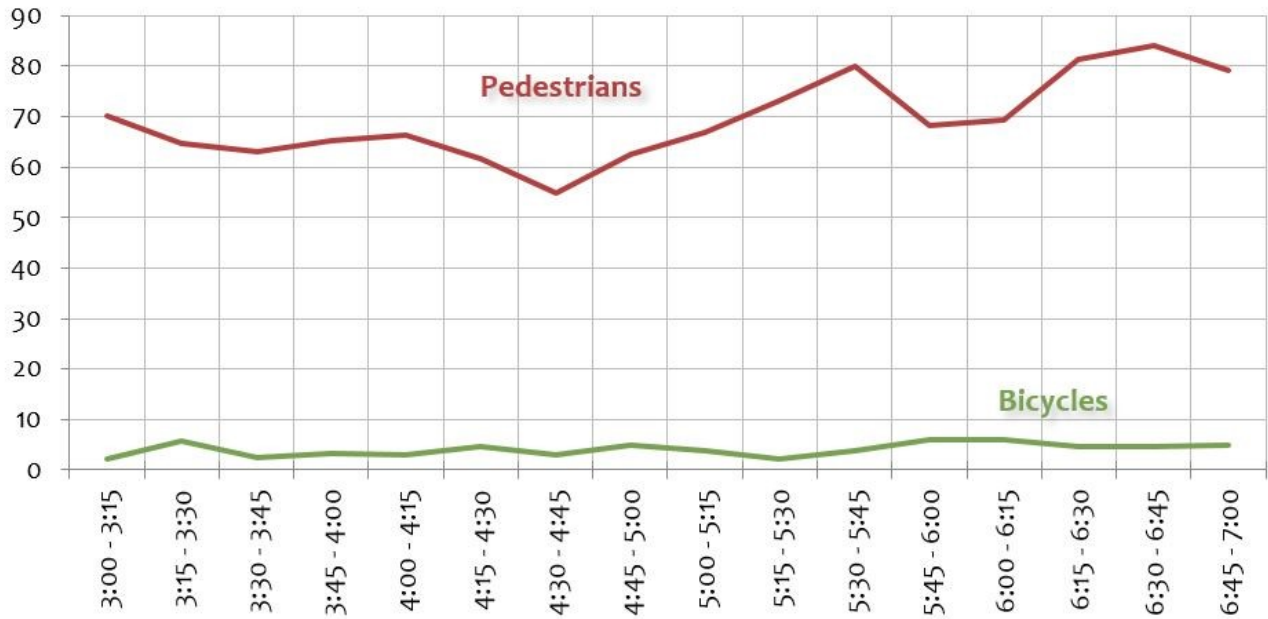
Fargo—40th Ave S just east of 45th St (Average of years 2014-2020)



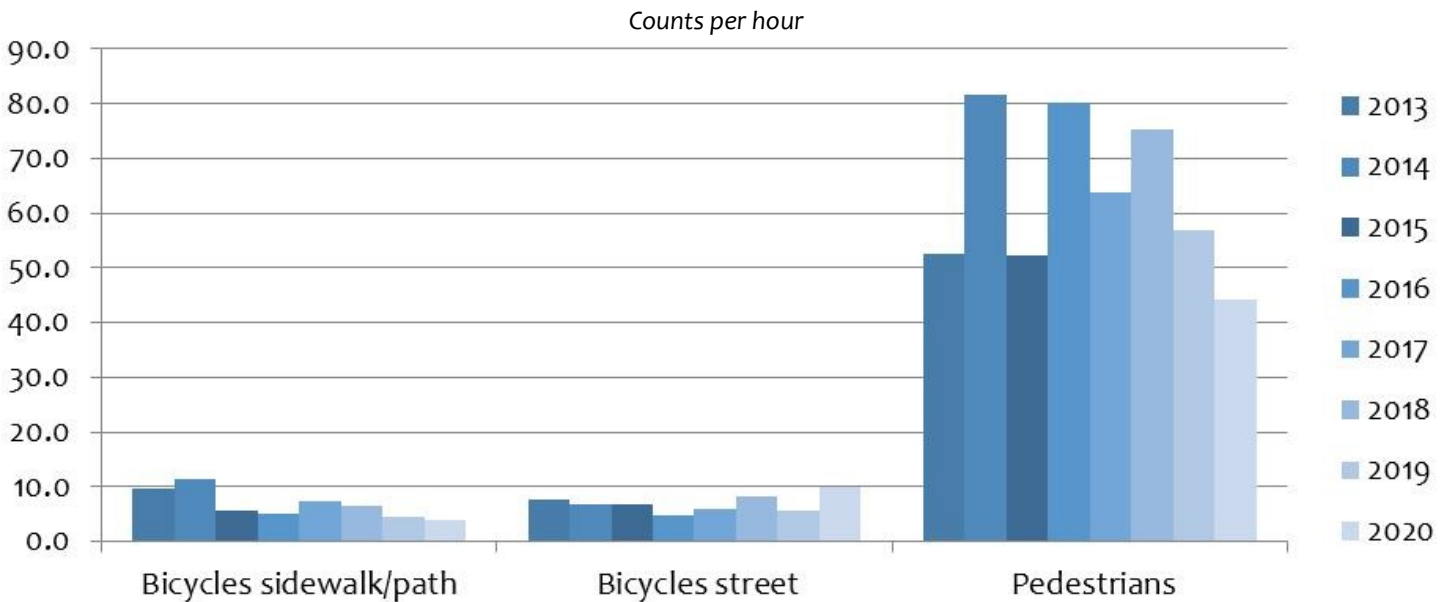
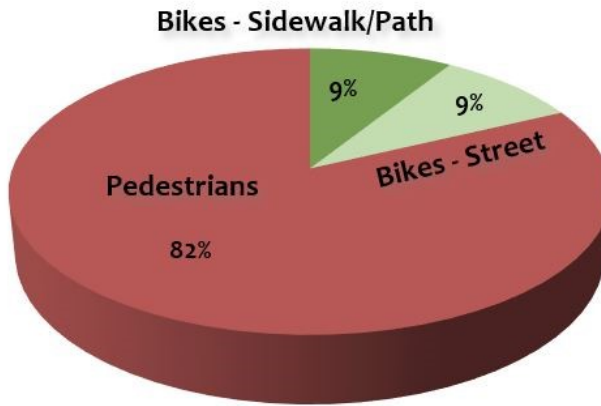
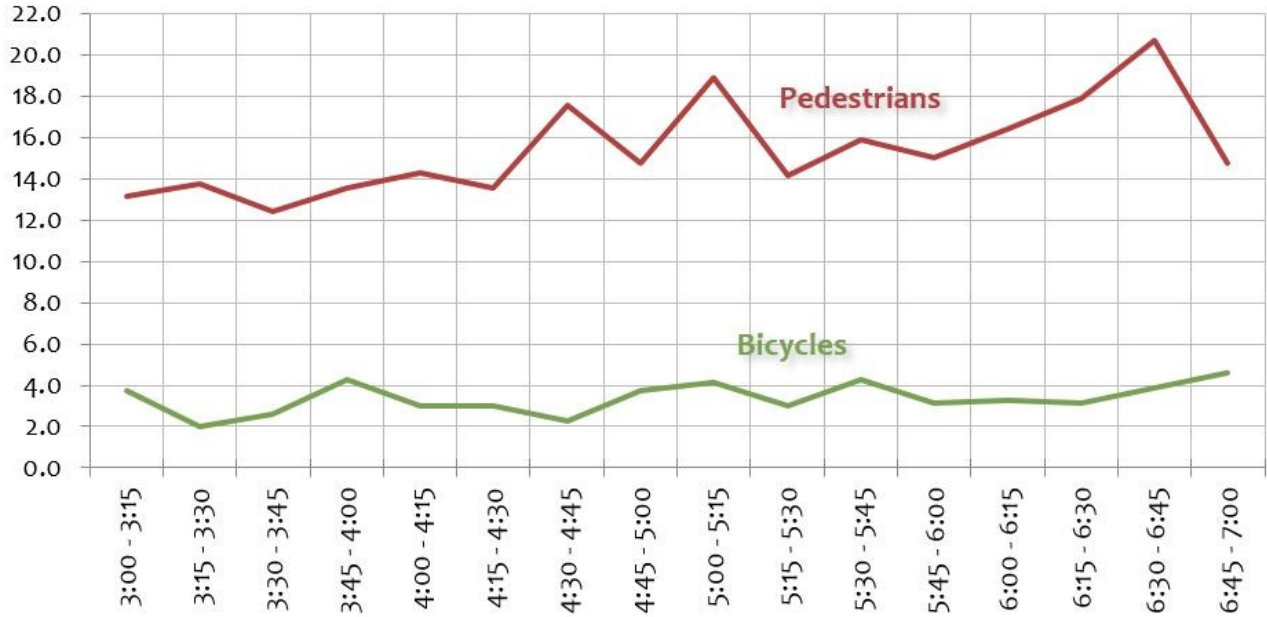
Counts per hour



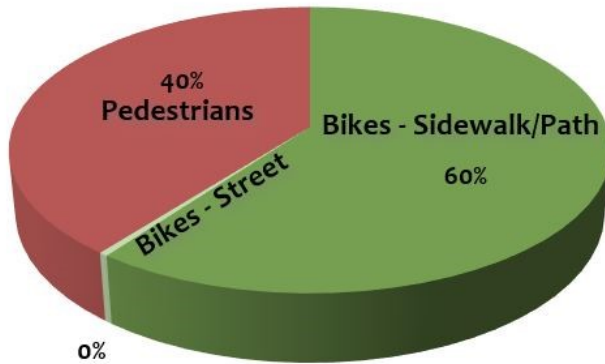
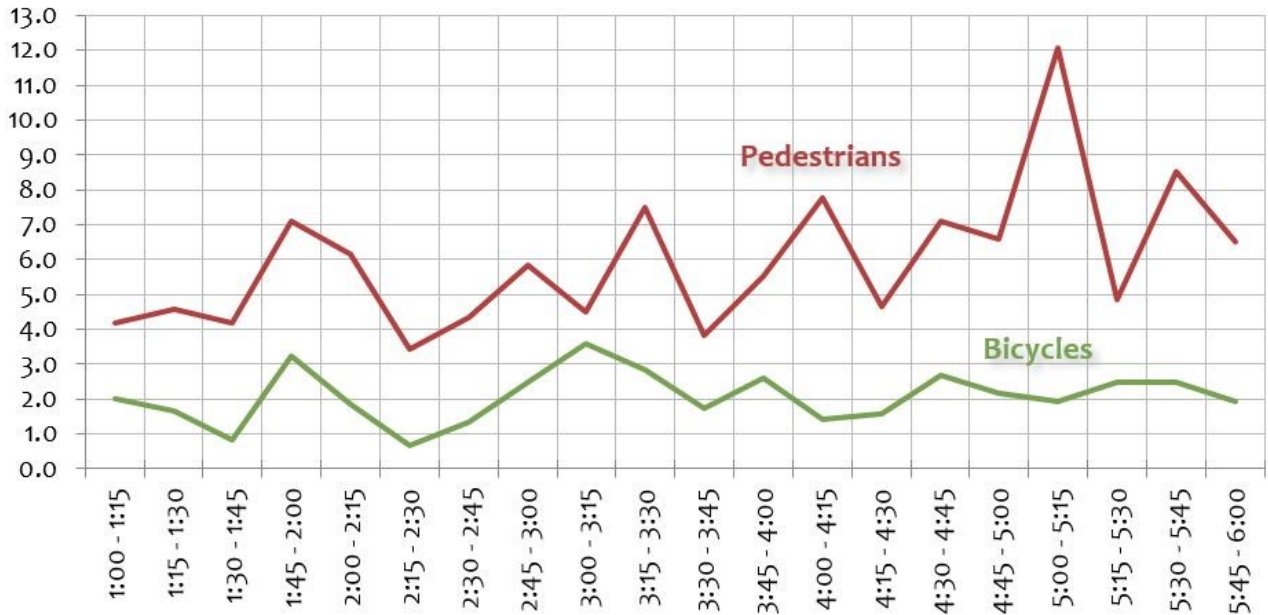
Fargo—Broadway just south of 2nd Ave N (Average of years 2014-2020)



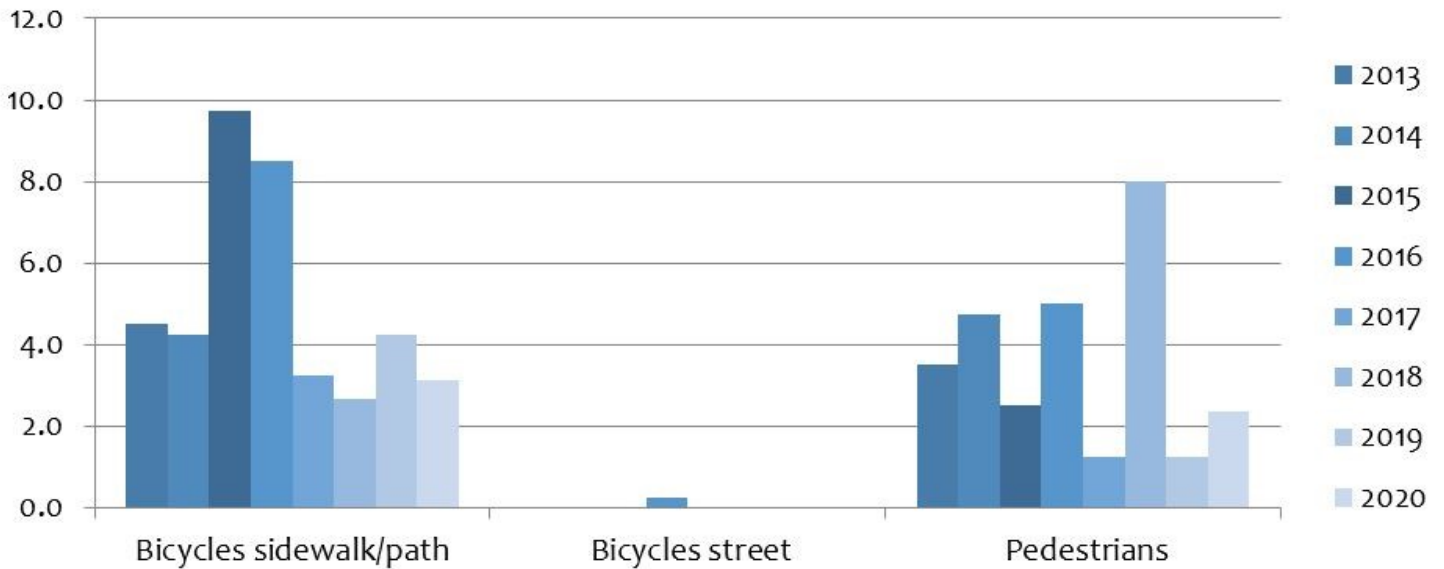
Fargo—Broadway at RR tracks (between NP Ave & Main Ave) (Average of years 2013-2020)



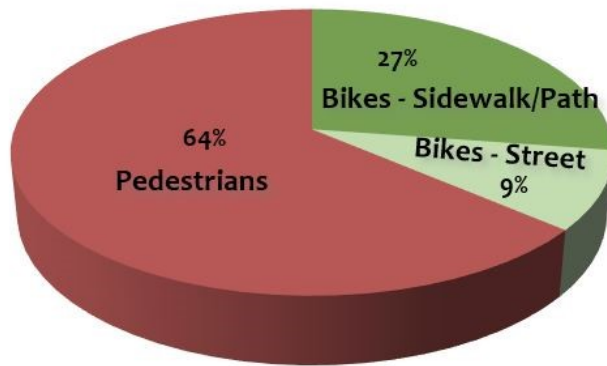
Fargo—12th Ave N just west of University Dr. (Average of years 2014-2020)



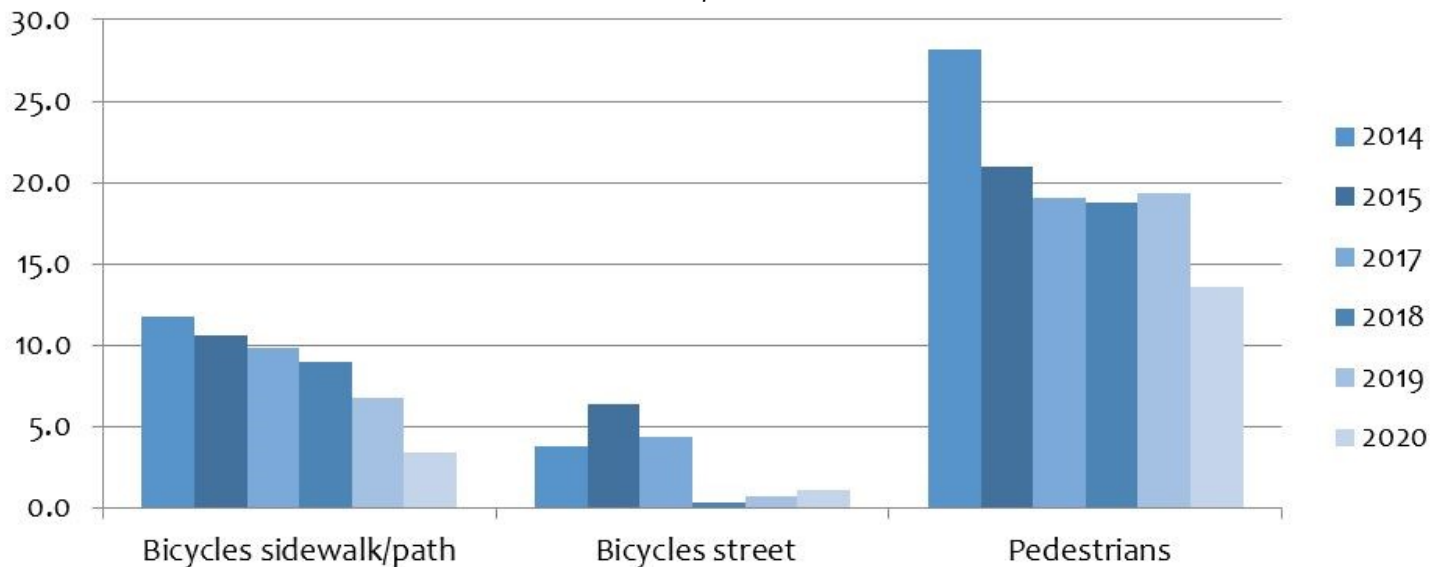
Counts per hour



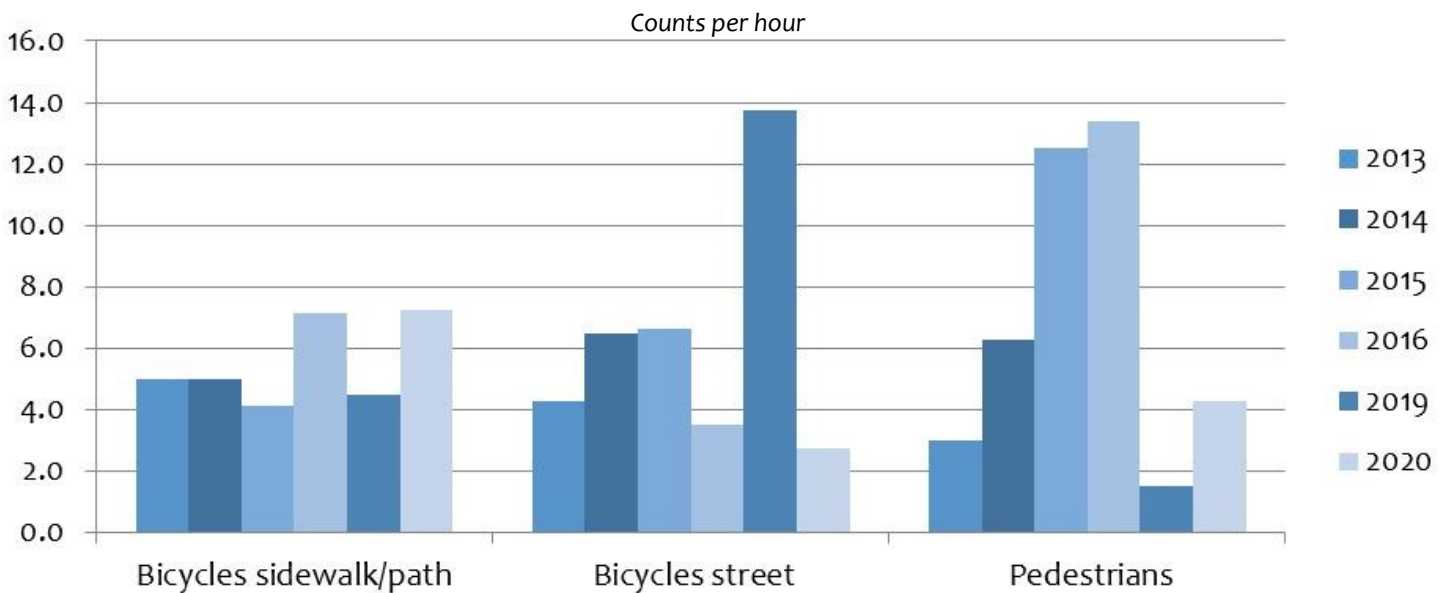
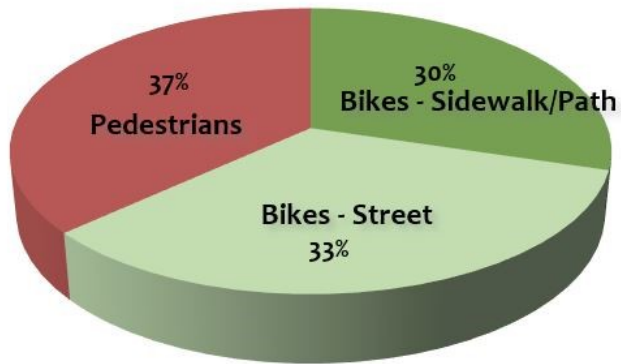
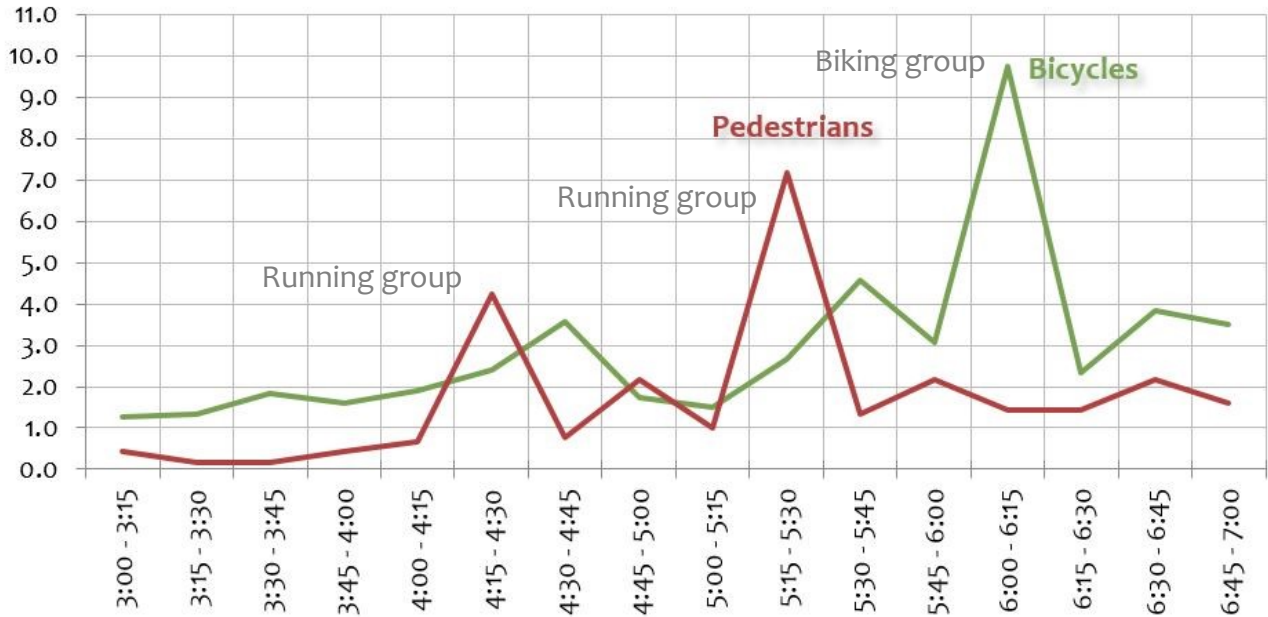
Fargo—University Dr just north of 12th Ave N (Average of years 2014-2020)



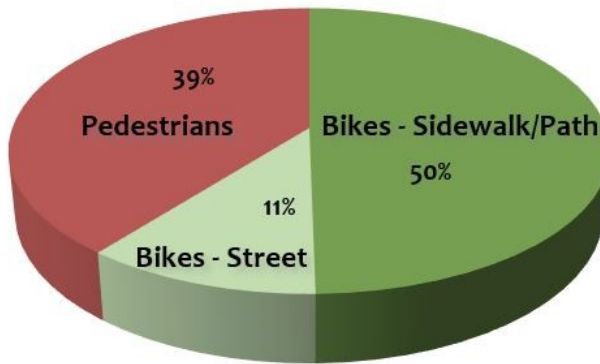
Counts per hour



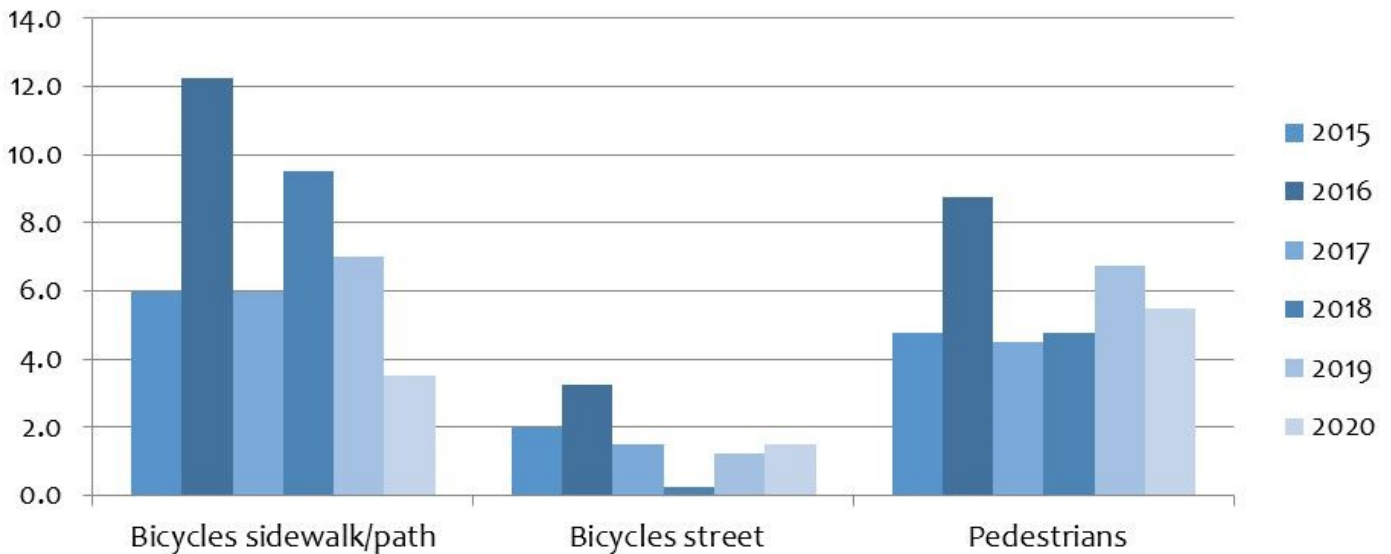
Fargo/Moorhead—12th Ave N/15th Ave N Bridge over Red River (Average of years 2013-2020)



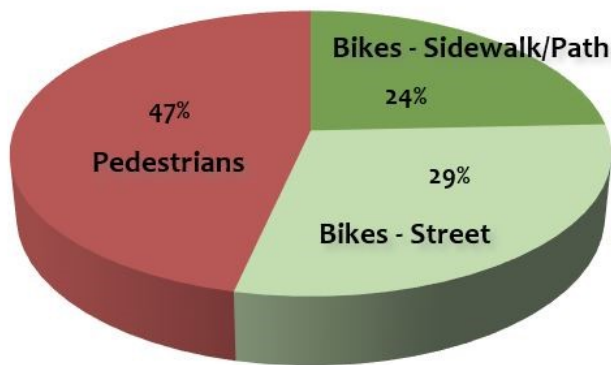
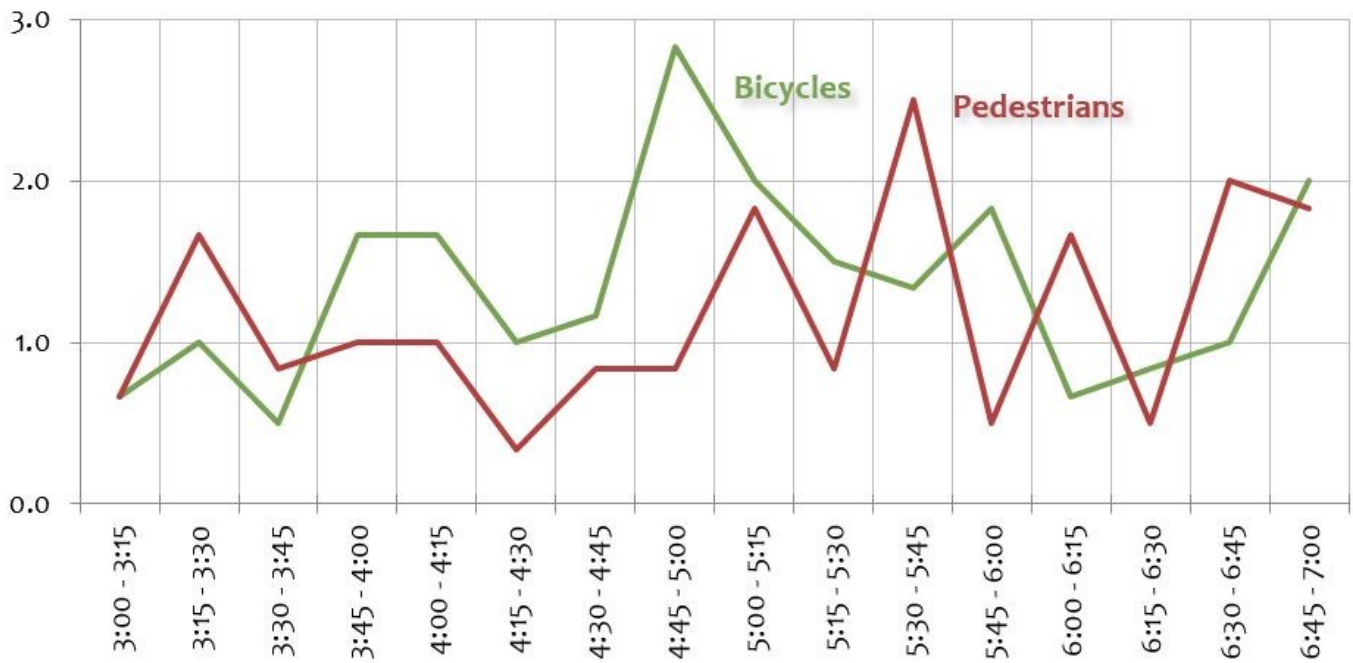
Fargo/ Moorhead—NP Ave/Center Ave bridge over Red River (Average of years 2015-2020)



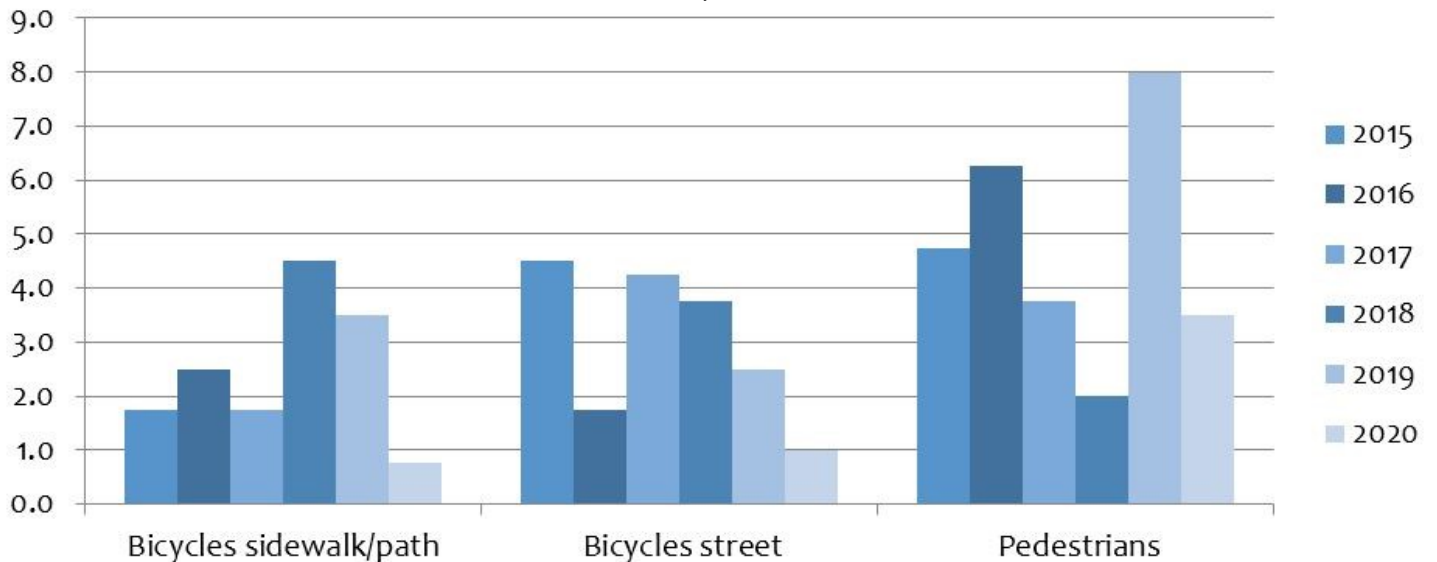
Counts per hour



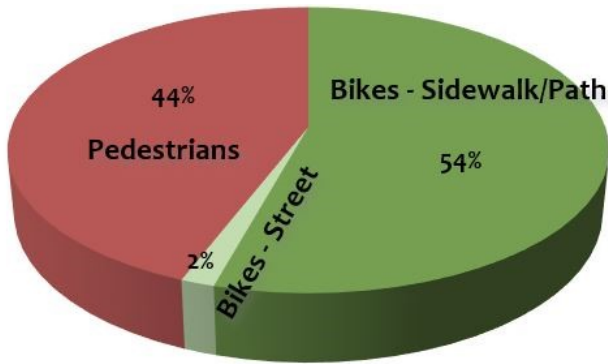
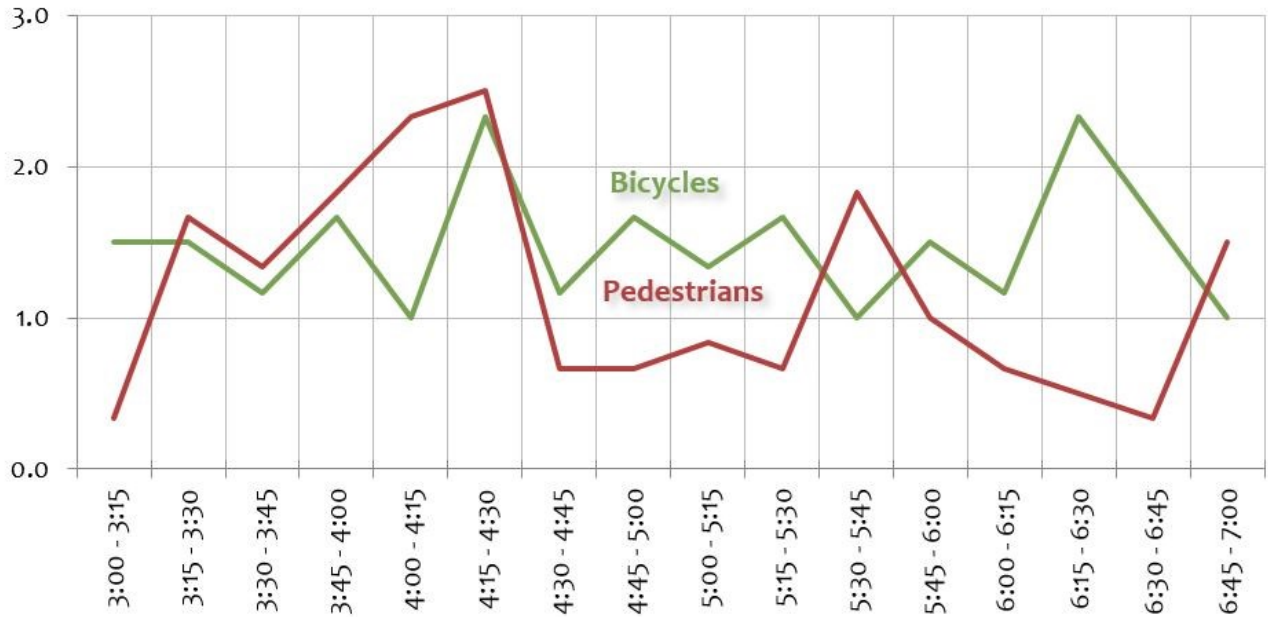
Moorhead—4th St just south of Center Ave (Average of years 2015-2020)



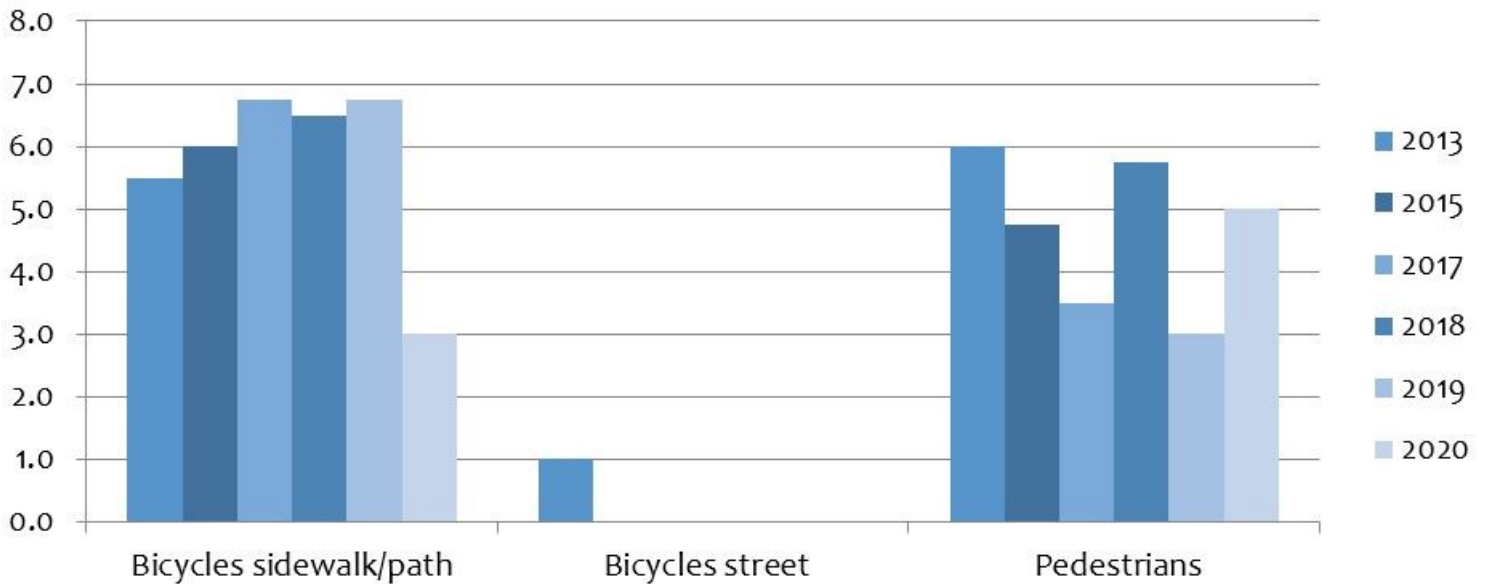
Counts per hour



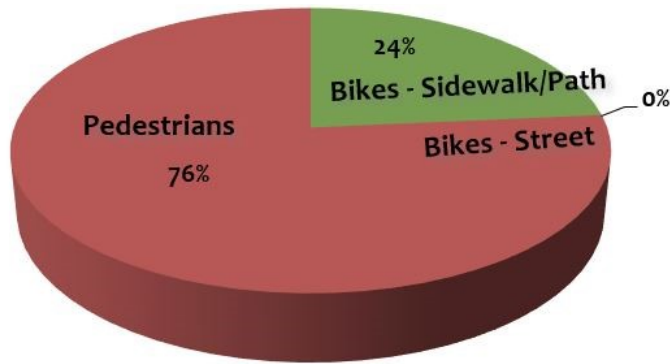
Moorhead—8th St over I-94 (Average of years 2013-2020)



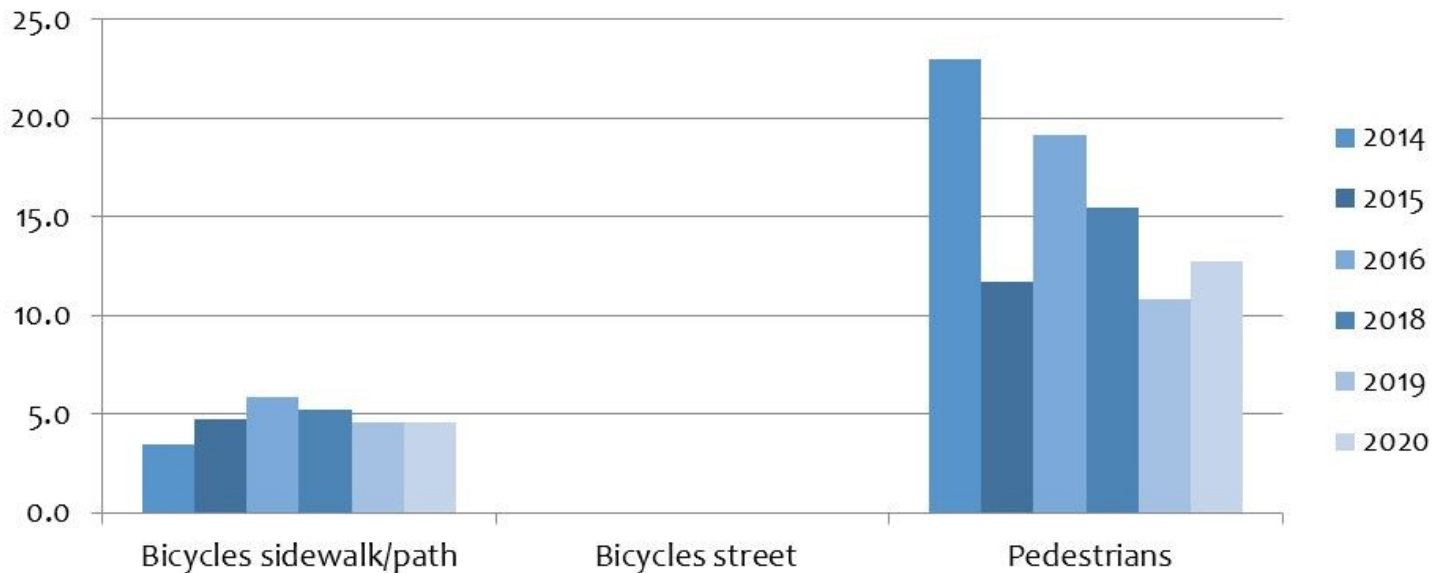
Counts per hour



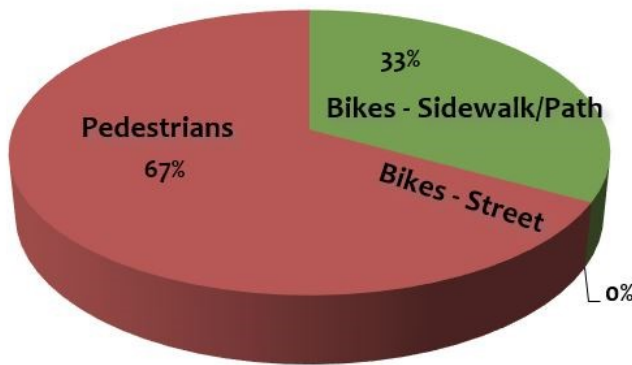
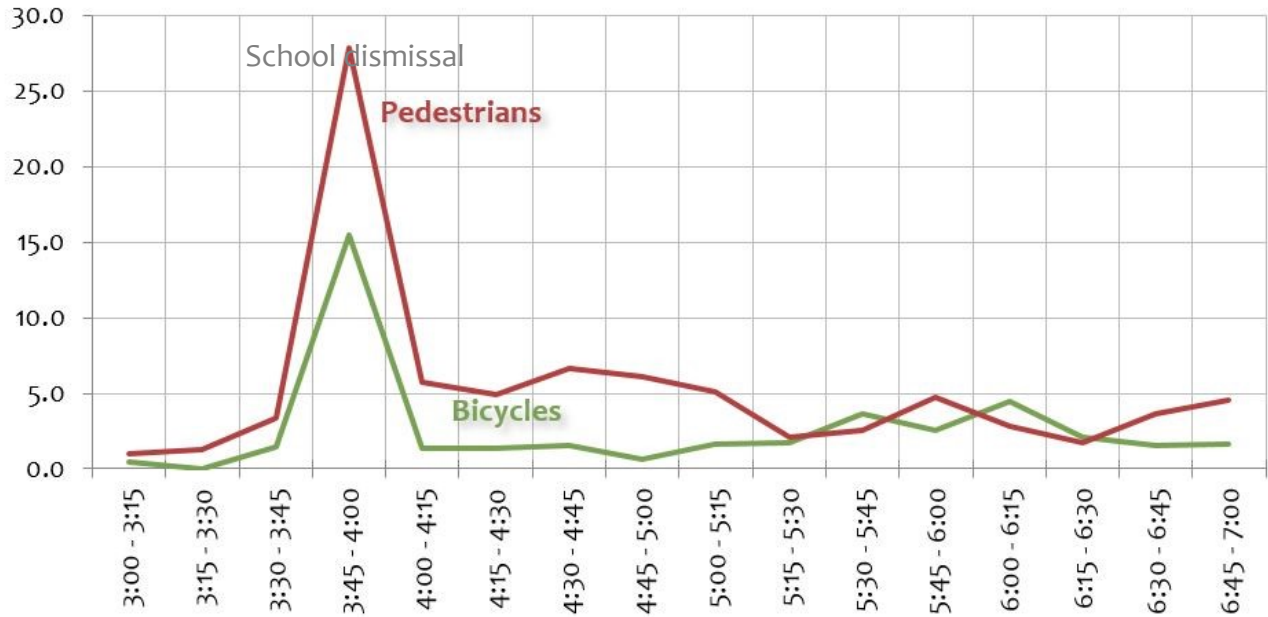
West Fargo—9th St just south of 17th Ave E (Average of years 2014-2020)



Counts per hour



West Fargo—17th Ave E just west of 9th St (Average of years 2014-2020)



Counts per hour

