

WELCOME TO PUBLIC INPUT MEETING #1

Moorhead I-94 & 20th Street Interchange Analysis

Tuesday, Sept. 19 | 5PM - 7PM



Attend a Future Public Meeting

Plan to join us at future public meetings. We will advertise upcoming meetings online and throughout the community.

You can be notified of future public meetings by providing your email address to: farnsworth@fmmetrocog.org.



Visit the Project Website

Stay up-to-date on meetings, next steps, and opportunities through the project website: www.fmmetrocog.org/20thInterchange



Leave a Comment

Share feedback via comment card or by emailing farnsworth@fmmetrocog.org. Comments will be collected until Sept. 29.

PROJECT BACKGROUND

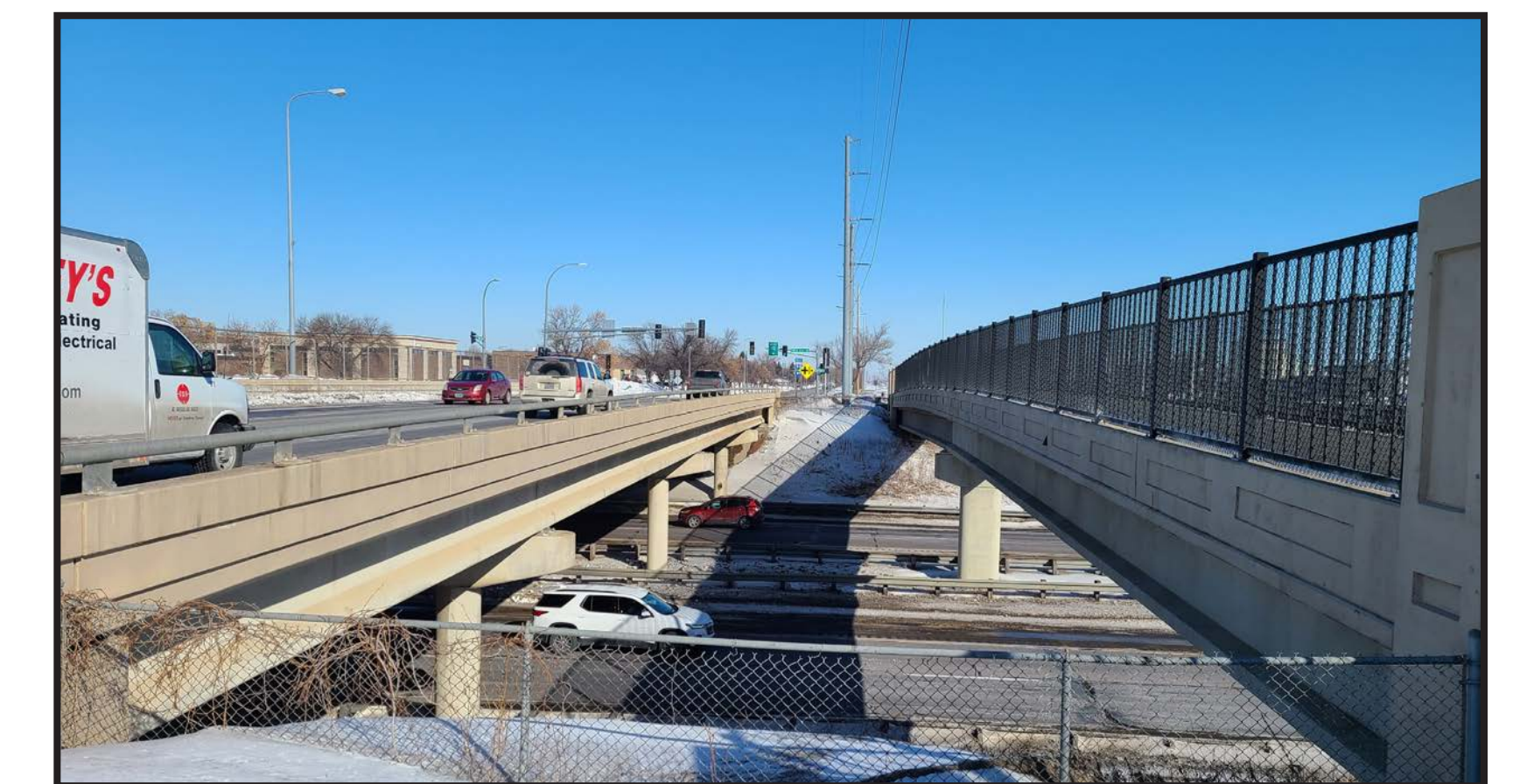
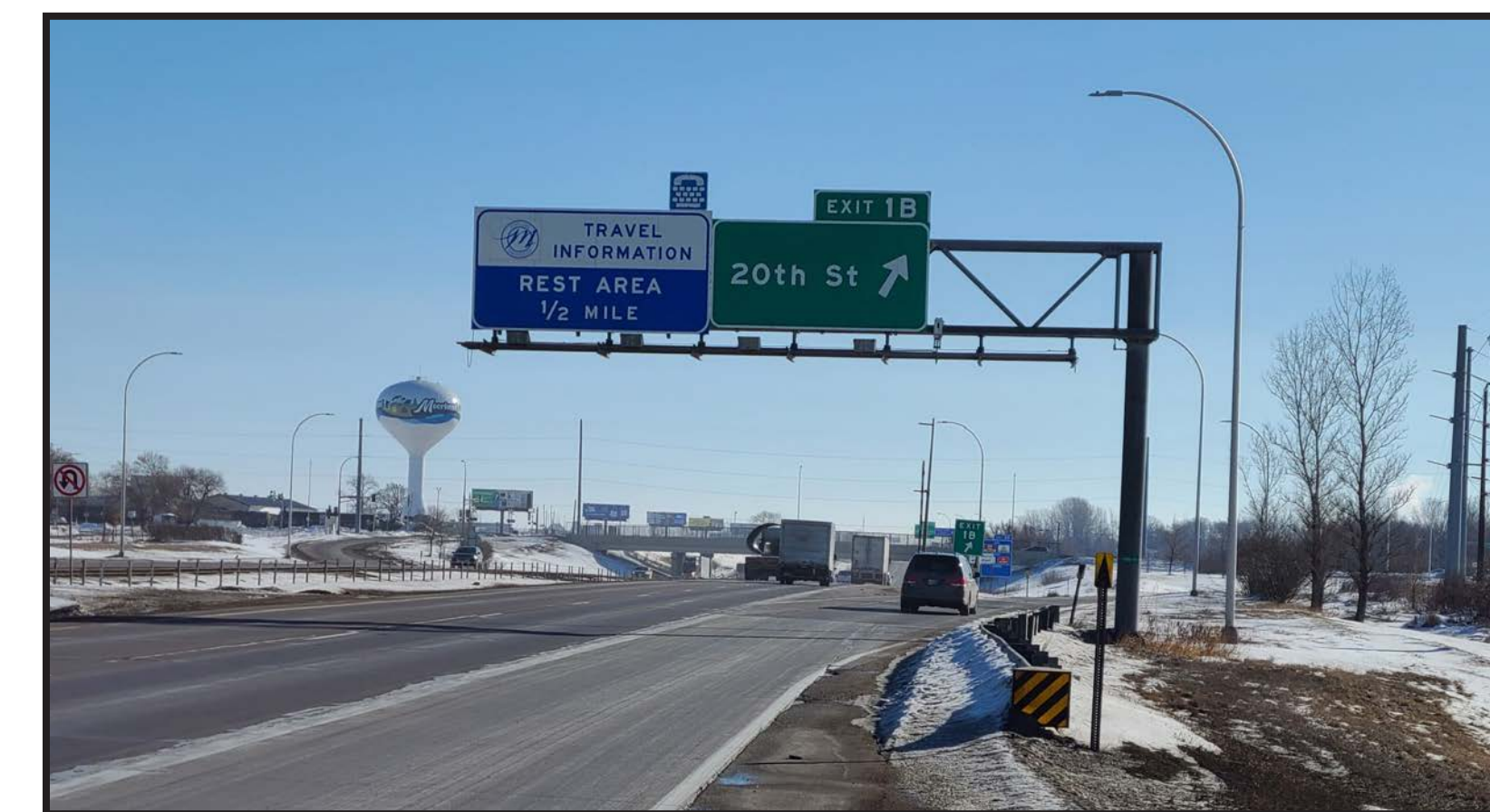
About the Project

Interstate 94 (I-94) is a heavily traveled corridor and a key link for a variety of traffic users, including local and through freight traffic, workforce and education commuters, local and regional shopping, and recreational travel. While there are four interchanges in less than 2.5 miles in Moorhead, the efficient operations of both I-94 and the local road network are limited by the fact that only two of these are full interchanges.

The current 20th Street Interchange has ramps on the west side only, meaning all westbound traffic on I-94 and traffic wanting to go east on I-94 need to use either the 34th Street (1.25 miles east of 20th Street) or 8th Street/US Hwy 75 (1 mile west of 20th Street) interchanges. The lack of Interstate connectivity to/from the east on 20th Street is presumed to increase the use of nearby interchanges and increase travel time for some users.

Study Purpose

The purpose of this study is to analyze the need and feasibility for a full interchange at I-94 and 20th Street. This includes reviewing traffic and travel time impacts of a full interchange, completing an environmental screening, and identifying potential alternatives which would look at impacts to the surrounding area and estimated construction costs.



Primary Study Area

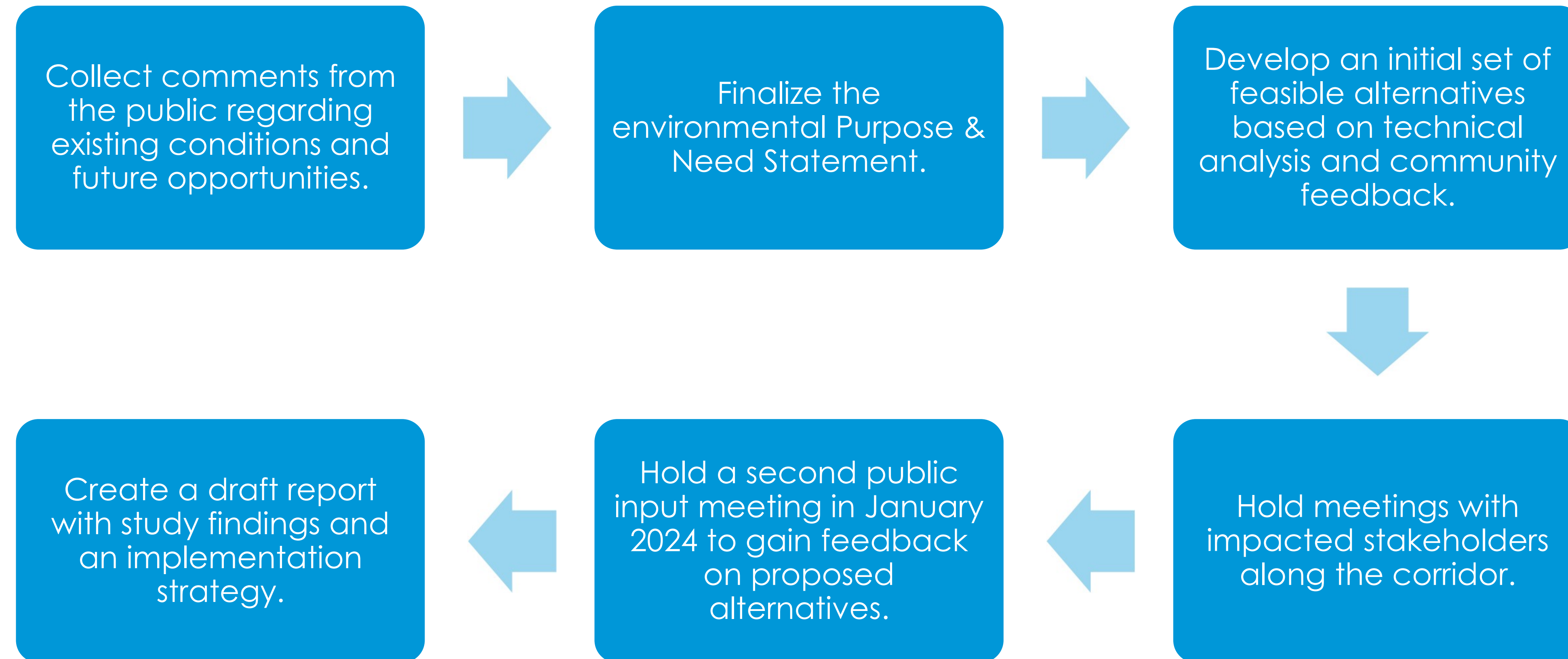
The primary study area being analyzed focuses on the I-94 interchange at 20th Street. This area encompasses the footprint of the potential interchange alternatives. Screening for environmental impacts, technical performance, project costs, etc. for each of the interchange alternatives will take place in this area.

Secondary Study Area

The purpose of the secondary study area is to understand how different interchange alternatives at I-94 and 20th Street might effect the surrounding local and interstate network. This will not identify or evaluate potential alternatives within this area.

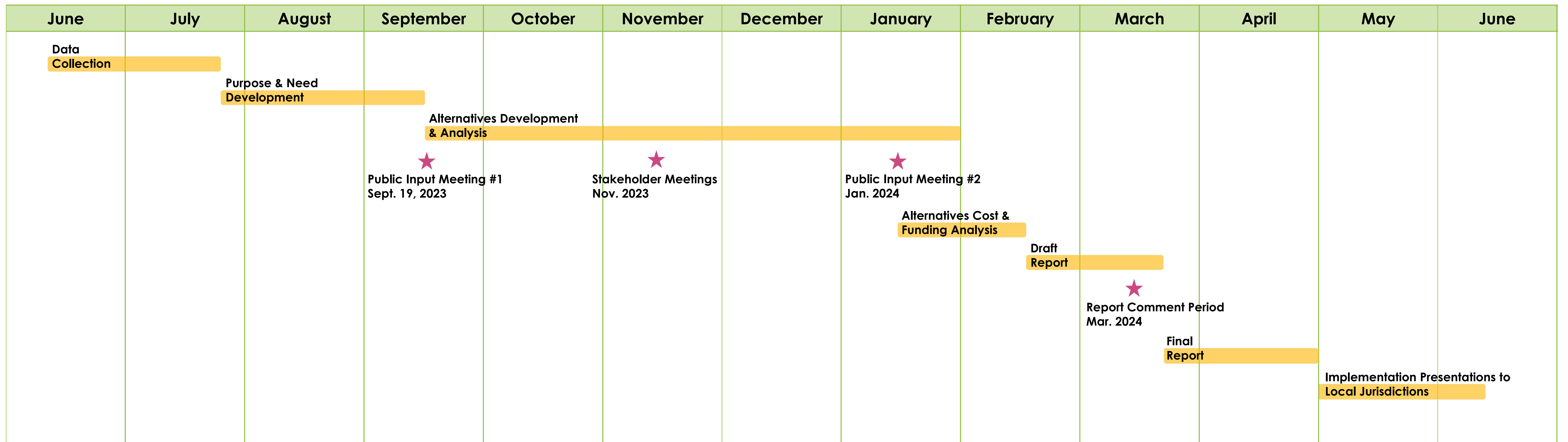
PROJECT LOGISTICS

Next Steps



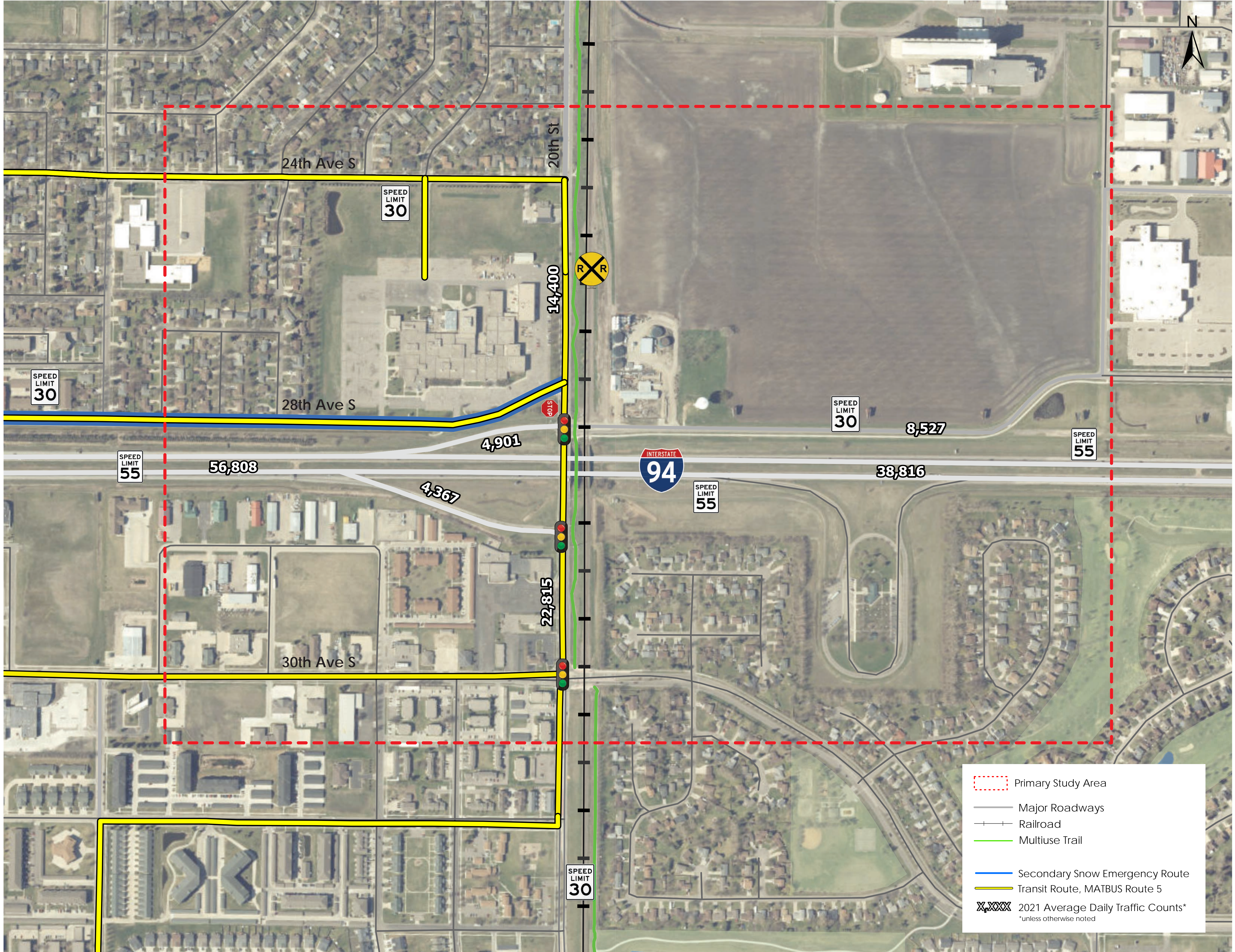
Tentative Project Schedule*

2023 → 2024

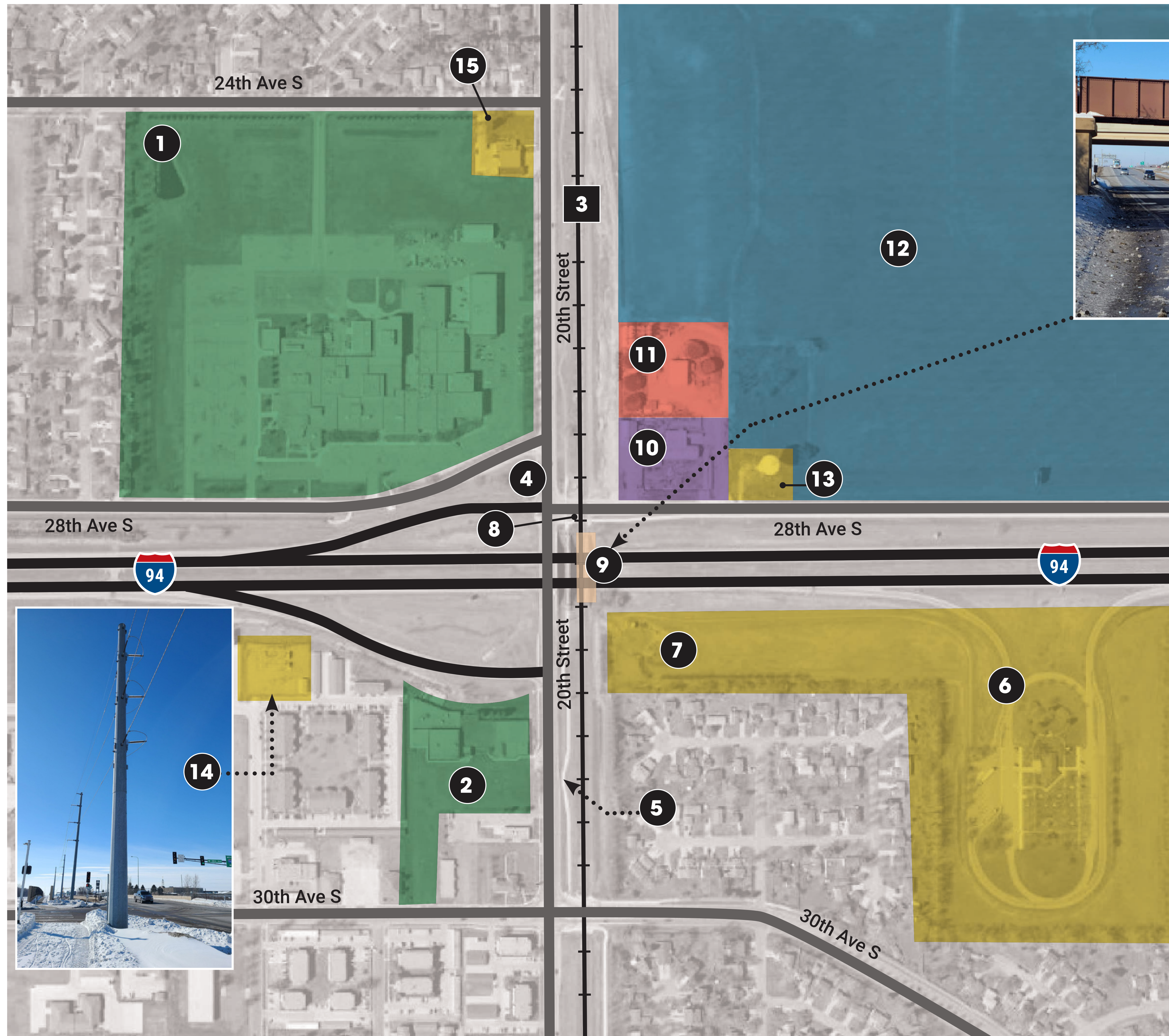


*The project schedule is subject to change as the project progresses.

EXISTING CONDITIONS



KEY FEATURES



FEATURES

1	M State
2	Triumph Lutheran Brotherhood Church
3	BNSF Moorhead Subdivision Track
4	28th Avenue Intersections
5	Multi-Use Trail
6	MnDOT Wayside Rest Area
7	MnDOT Lift Station
8	At-grade RR Crossing Contributes to Congestion and Driver Confusion
9	Existing Bridge Piers Limit I-94 Modifications
10	Ken's Sanitation and Recycling
11	Gavilon Fertilizer
12	Busch Agricultural Resources Property
13	City of Moorhead Water Tower
14	Moorhead Public Service Substation
15	Moorhead Fire Station No. 2